



Goodge Street, W1T

£750 Per week

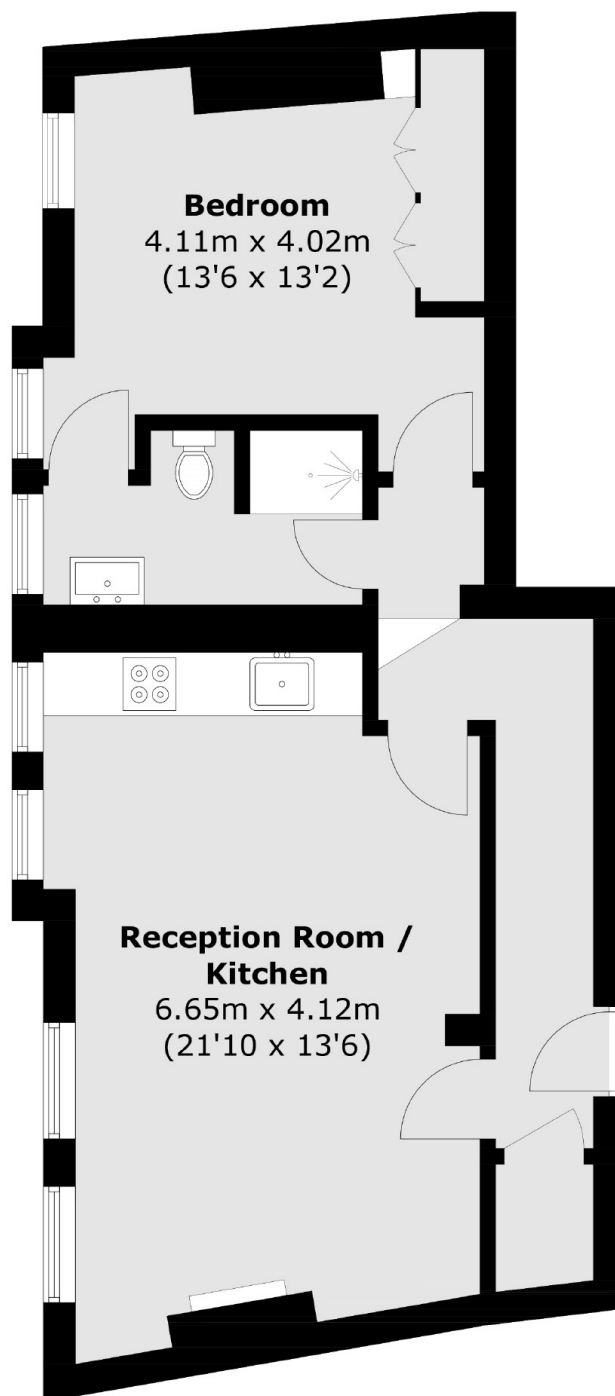
A fantastic one double bedroom property in the heart of Fitzrovia. This property has an open plan living and kitchen area, wooden floors throughout and a large double bedroom.

Goodge Street is perfectly located for ease of transport throughout London. It is located within walking distance to Tottenham Court Road and Goodge Street Station.

Features

- One Double Bedroom
- Wooden Floors Throughout
- Modern Interior
- Central Location
- First Floor
- Natural Light

Goodge Street, London, W1T



Total area (approx.): 54.5 sq. m (586.6 sq. ft)