



Arkwright Road

Hampstead, NW3

Asking Price £1,100,000

Situated on the top floor of this magnificent detached period house is this contemporary third-floor two bedroom, two bathroom flat offering beautifully presented accommodation with an abundance of character and charm.

The property comprises a large reception room and kitchen, private balcony, two well-proportioned double bedrooms, a stylish bathroom and en-suite shower room, and excellent built in storage.

The flat combines modern living with attractive features, including exposed brickwork and far reaching views. The building further offers its residents the benefit of access to a large and well-maintained south west facing communal garden.

Ideally located on Arkwright Road in Hampstead, the property is perfectly positioned for all the shops, cafes, restaurants and transport links that Hampstead Village (Northern Line) provides, as well as the Finchley Road (Jubilee, Metropolitan and Overground lines). Sole Agent.

CHESTERTONS



Arkwright Road

Hampstead, NW3

- Contemporary third floor flat
- Two bedrooms
- One bathroom & one shower room
- Built in storage and exposed brick
- Private balcony
- Far reaching views
- South west facing communal garden



Tenure: Leasehold 98 years 8 months remaining as of May 2026.

Service Charge: £3,000 per annum.

Ground Rent: £0

Local Authority: Camden

Council Tax Band: F

Score	Energy rating	Current	Potential
92+	A		
81-91	B		
69-80	C		
55-68	D	68 D	79 C
39-54	E		
21-38	F		
1-20	G		

Chestertons Hampstead Sales

55-56 Hampstead High Street

Hampstead

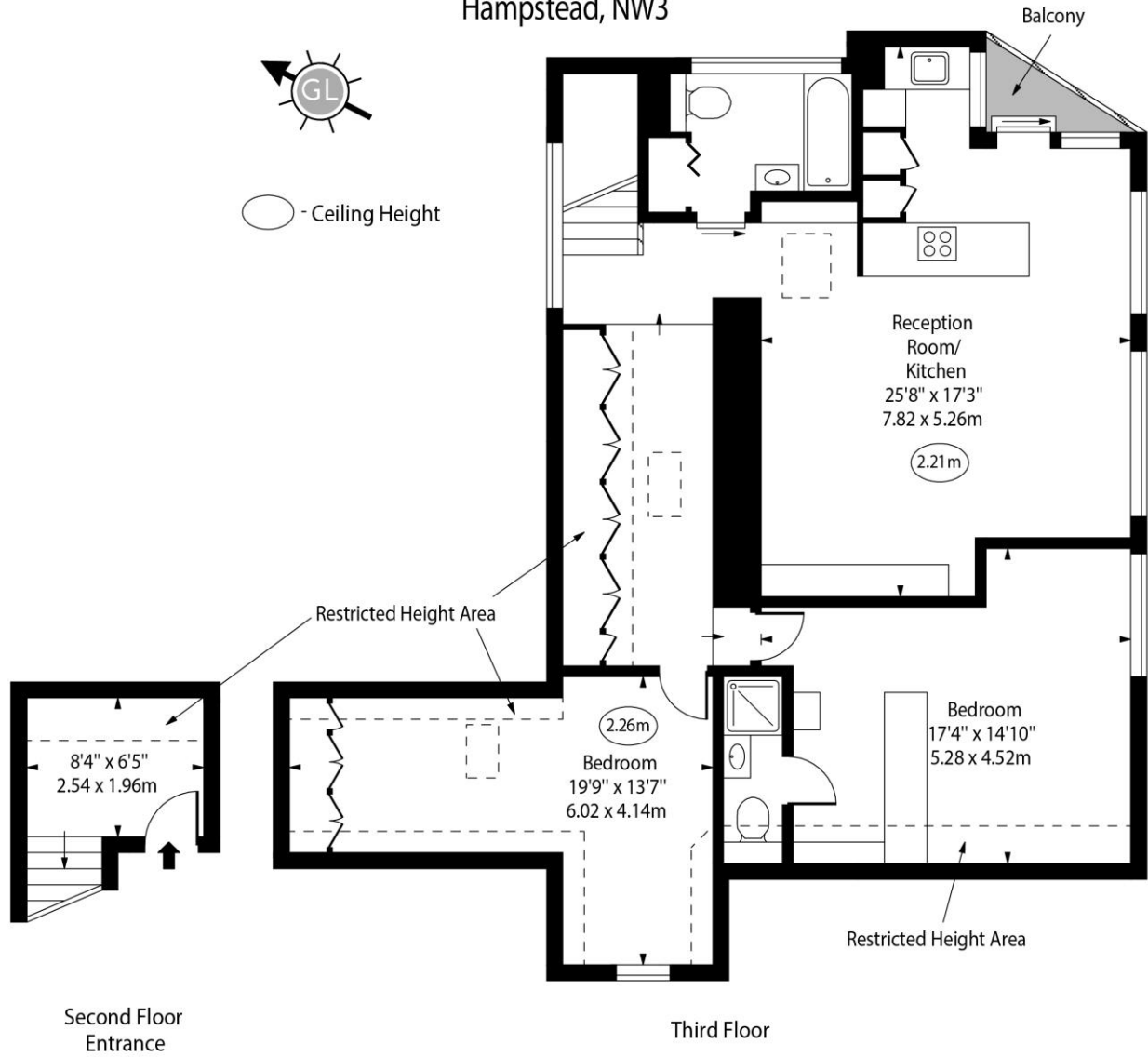
NW3 1QH

hampstead@chestertons.co.uk

020 7794 3311

chestertons.co.uk

Arkwright Road,
Hampstead, NW3



Approx Gross Internal Area 982 Sq Ft - 91.23 Sq M

Approx. Floor Area Including Restricted Heights 1122 Sq Ft - 104.24 Sq M

Every attempt has been made to ensure the accuracy of the floor plan shown. However, all measurements, fixtures, fittings, and data shown are approximate interpretations and for illustrative purposes only. Measured according to the RICS. Not To Scale.

www.goldlens.co.uk
Prepared for Chestertons
Ref. No. 031699E