



Coxwell Boulevard, NW9

£2,790 Per calendar month

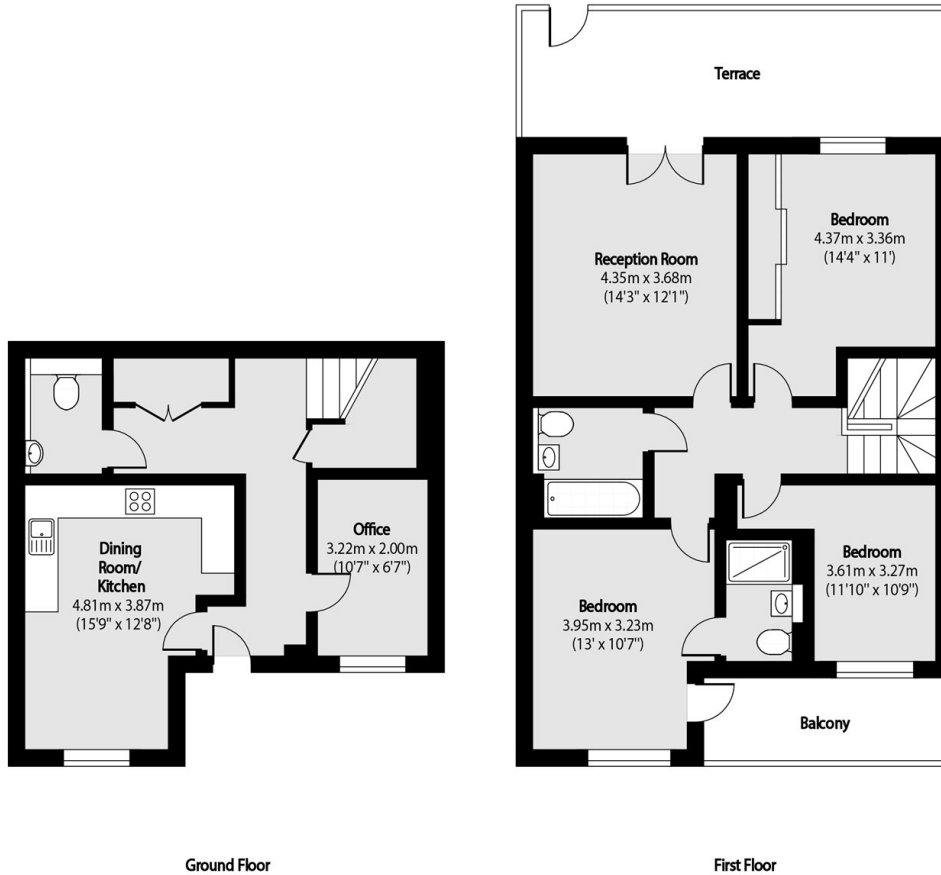
Exceptionally well-presented modern three/four bedroom duplex maisonette in this sought after development offering spacious bedrooms with en-suite and private balcony to main bedroom, a modern kitchen with dining area, a large living room with direct access to private patio, family bathroom/WC, downstairs guest WC, allocated parking for one vehicle, well maintained internal and external communal gardens.

This stunning property is located close (walking distance) to both Mill Hill Broadway (Thameslink) and Colindale (Northern Line) tube stations, and nearby to the Royal Air Force museum.

Features

Modern Duplex Maisonette
Private Patio & Balcony
Two Bathrooms
Communal Gardens
Allocated Parking
Close to Local Amenities

Coxwell Boulevard, London, NW9



Total area (approx): 115.04 sq m (1238 sq. ft)

Terrace total area (approx): 17.71 sq m (191 sq. ft)

Balcony total area (approx): 6.60 sq m (71 sq. ft)