



House - Terraced (EPC Rating: C)

17 DANESBURY PLACE, BLACKPOOL,
LANCASHIRE, FY1 3LX

PCM

£650 PCM



2 Bedroom House - Terraced located in Lancashire

Welcome to Danesbury Place....

Brand new to the rental market, this end terrace property may not be the largest property in the world but a home ideal for a couple or small family that is clean, modern, tidy and ready to walk straight in to.

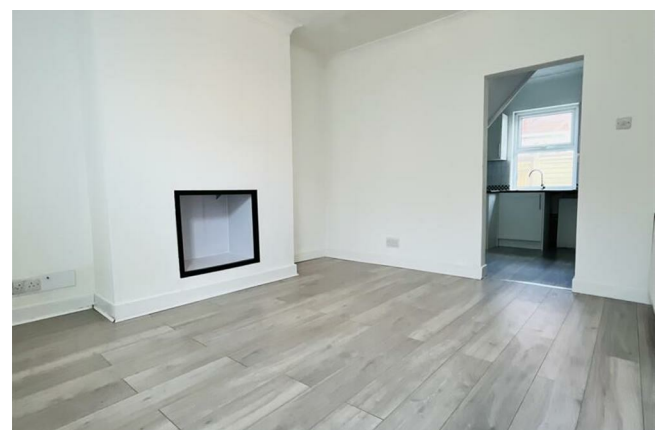
Danesbury Place is a tiny cul-de-sac, that is tucked away behind Church Street, ideal if you want easy access in to the town centre. Number 17 is in the middle of a row of street terraces. Limited parking is available on the street with a permit that can be obtained from Blackpool Council on production of your tenancy agreement.

You enter this unfurnished home into the living room - a modern room with a feature fire place.

To the rear of the property, there is a fitted kitchen which is fit with white units and complimenting worktops. Fit with an electric oven, induction hob (you will need special pans!), stainless steel sink and mixer taps and plumbing for your own washing machine & fridge freezer. It is from here that you gain access to outside to the rear yard - a wee sun trap on sunny Blackpool days.

Up to the first floor and you will find 2 bedrooms; the master room is a good size. The second bedroom, is a smaller single room. Both rooms are painted white with newly fit charcoal coloured carpets. And finally there is the bathroom; a 3 piece suite in white with a double shower.

This tidy little home is warmed by a combination boiler and so this heats your hot water too. uPVC double glazing can also be found throughout.

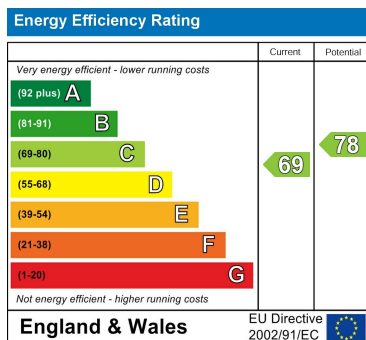


LETTING SOLUTIONS BLACKPOOL LTD | 52 WHITEGATE DRIVE, BLACKPOOL, LANCASHIRE, FY3 9DQ

Council Tax Band

A

Energy Performance Graph



Call us on

01253 886444

hello@lsblackpool.com

lsblackpool.com

Agents Note: Whilst every care has been taken to prepare these particulars, they are for guidance purposes only. All measurements are approximate and are for general guidance purposes only and whilst every care has been taken to ensure their accuracy, they should not be relied upon and potential buyers are advised to recheck the measurements.