



Victoria Avenue | | LS29 6ER

Asking price £950,000

**TW** | **TRANMER  
WHITE**  
Trusted Estate Agents

5 Victoria Avenue |  
| LS29 6ER  
Asking price £950,000

An exceptionally well-built and thoughtfully designed three bedroomed detached bungalow standing within a very private and substantial plot, situated at the end of a highly-regarded cul de sac.

Enjoying an elevated position and overlooking the mature grounds, this outstanding home includes a sizeable lower ground floor, accessed via a lift, that features a double garage, utility room and an abundance of store rooms along with a workshop.

- Lift Access Between The Upper & Lower Ground Floors
- Off-Street Parking For Several Vehicles
- Private & Secluded Cul De Sac Position
- Built To An Incredibly High Standard

With gas central heating, the accommodation comprises:

### Upper Ground Floor

#### Sun Room

19'2 (max) x 18'4 (max) (5.84m (max) x 5.59m (max))  
An inviting reception space filled with natural light and featuring Amtico flooring. An electric sliding door leads to:



A glorious sun room provides an inviting reception space and offers a stunning outlook over the well-kept gardens.



## Living Area & Dining Kitchen

29'4 x 19'6 (8.94m x 5.94m)

### Living Area:

Including a gas fire set within an exposed stone chimney breast, wood panelled vaulted ceiling with exposed beams, bay window overlooking the garden and a further window to the rear.

### Dining Kitchen:

The kitchen comprises an extensive range of base and wall units with coordinating granite work surfaces. Integrated appliances include an oven, warming drawer, pressure cooker, combi-microwave, fridge/freezer and a dishwasher. Adjoining the kitchen is a spacious dining area with windows to two sides. The vaulted panelled ceiling also covers the kitchen and dining area.

### Inner Hall

17'1 x 3'1 (5.21m x 0.94m)

A lift leads from the inner hall to the lower ground floor. Including a walk-in cloaks cupboard that measures 8'6 x 5'2.

### Principal Bedroom

14'3 x 11'0 (plus entry recess) (4.34m x 3.35m (plus entry recess))

A generous double bedroom enjoying a dual aspect and includes a recessed chest of drawers. Dual walk-in wardrobes measuring 13'5 x 6'4 including motion-sensitive lighting, dressing table, hanging space and drawers.

### En Suite

7'5 x 4'11 (2.26m x 1.50m)

Comprising a walk-in rainfall shower, hand wash basin, w.c and a heated towel rail.





## Bedroom

17'11 x 11'9 (5.46m x 3.58m)

A second double bedroom with windows to two sides and a Southerly aspect as well as fitted wardrobes and a dressing table.

## En Suite

9'6 x 5'6 (2.90m x 1.68m)

Comprising a jacuzzi bath with shower over, hand wash basin, w.c and a heated towel rail.

## Bedroom/Study

15'8 (into bay) x 10'3 (4.78m (into bay) x 3.12m)

Currently utilised as a study but large enough to function as a double bedroom, featuring fitted display shelving and cabinets, store cupboard/wardrobe with fitted shelving and a bay window with window seat.

## Lower Ground Floor

### Inner Hall

7'9 x 5'9 (2.36m x 1.75m)

Accessed via a lift.

### Cloakroom

SWith a hand wash basin and w.c.

### Store Room

29'6 x 19'4 (8.99m x 5.89m)

Large enough to be utilised in a number of different ways.

### Utility Room

11'3 x 8'5 (3.43m x 2.57m)

Comprising a range of base and wall units with coordinating work surfaces and extensive fitted store cupboards.

### Store Room/Workshop

11'4 x 9'6 (3.45m x 2.90m)



## Double Garage

21'2 x 19'2 (6.45m x 5.84m)

Accessed either internally or via an electric roller door.

## Store Room

11'10 x 9'0 (3.61m x 2.74m)

Located off the double garage.

## Boiler Room

19'1 x 9'10 (5.82m x 3.00m)

Housing the mechanical ventilation and heat recovery system.

## Outside

### Gardens

A standout feature is the creatively landscaped gardens that feature a circular lawn surrounded by well-stocked flower beds. A paved seating area wraps round the rear of the property and offers an excellent, South facing area for outdoor entertaining. A mature woodland area ensures a high degree of privacy.

### Driveway

A sizeable driveway provides off-street parking for several vehicles.

### Tenure

Freehold.



### **Please Note**

The extent of the property and its boundaries are subject to verification by inspection of the title deeds. The measurements in these particulars are approximate and have been provided for guidance purposes only. The fixtures, fittings and appliances have not been tested and therefore no guarantee can be given that they are in working order. The internal photographs used in these particulars are reproduced for general information and it cannot be inferred that any item is included in the sale.

### **Mobile Signal/Coverage**

The mobile signal/coverage in this area can be verified via the following link:  
<https://checker.ofcom.org.uk/en-gb/mobile-coverage>

### **Offer Acceptance & AML Regulations**

In accordance with the Money Laundering, Terrorist Financing and Transfer of Funds (Information on the Payer) Regulations 2017, and to comply with the expanded Money Laundering Regulations, we are required to obtain proof of how the property purchase will be financed, as well as valid identification from all prospective buyers.

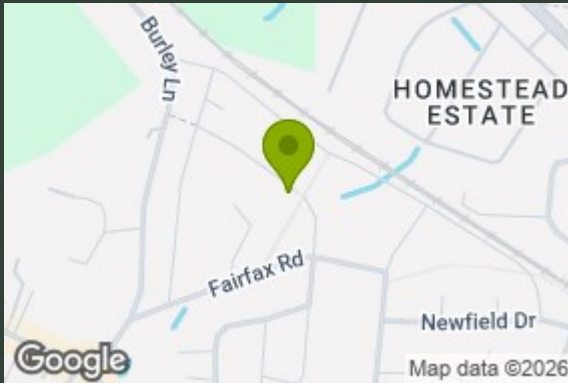
Buyers are kindly asked to provide this information promptly to avoid any delay in agreeing the sale. The cost for these checks is £30 per named buyer (inclusive of VAT), payable to the firm administering the money laundering ID checks, Movebutler.

Please note that the property will not be marked as "sold subject to contract" until appropriate identification has been provided and all AML checks have been fully completed.

A sweeping driveway wraps round the property, providing ample off-street parking and leading to an integral double garage.



©2026 Airbus, Infoterra Ltd & Bluesky, Maxar Technologies



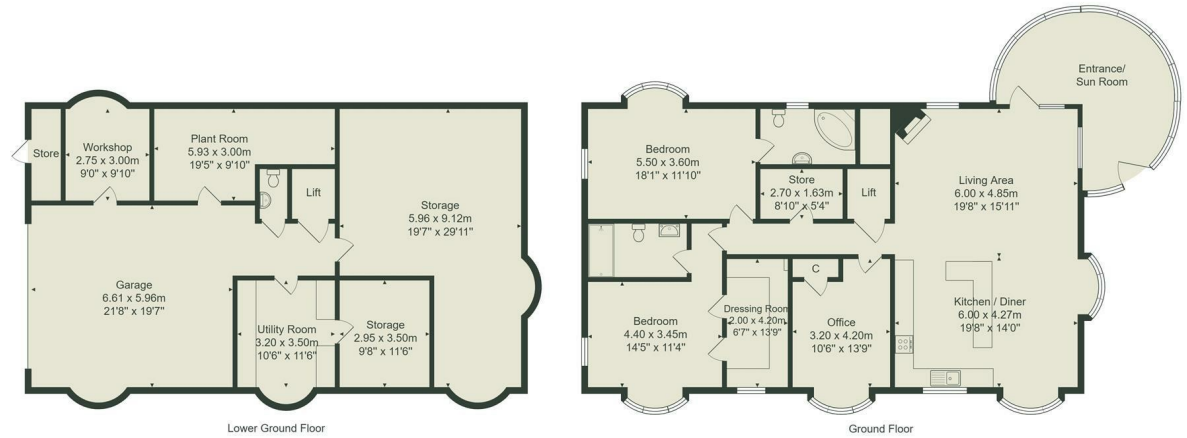
Google

Map data ©2026



Google

Map data ©2026



Lower Ground Floor

Ground Floor

Total Area: 323.6 m<sup>2</sup> ... 3484 ft<sup>2</sup>  
 All measurements are approximate and for display purposes only.  
 No liability is accepted by either the agency or Box Property Solutions Ltd as to the exact measurements of the rooms.  
 Box Property Solutions Ltd retains the copyright on this plan and allows agents to use it with agreed permission.

Energy Efficiency Rating		Current	Potential
Very energy efficient - lower running costs			
(92 plus) A			
(81-91) B			
(69-80) C			80
(55-68) D			
(39-54) E		53	
(21-38) F			
(1-20) G			
Not energy efficient - higher running costs			
England & Wales		EU Directive 2002/91/EC	

139 Bolling Road  
 Ben Rhydding  
 Ilkley  
 West Yorkshire  
 LS29 8PN  
 01943 661141

ilkley@tranmerwhite.co.uk  
<https://www.tranmerwhite.co.uk/>