



26 Benbow Quay, Shrewsbury, SY1 2DL

1 bedroom apartment — £149,000 Leasehold

26 Benbow Quay, Shrewsbury, SY1 2DL

Coopergreenpooks.co.uk

£149,000 Leasehold — 1 bedroom apartment

sales@cgpooks.co.uk

Occupying a lovely position with views of the River Severn, this ground floor apartment offers neatly presented accommodation with the benefit of a private front door and allocated parking, situated within a short walk of the train station and town centre.

KEY FEATURES

- Open plan kitchen/dining/living room with window and part glazed door to the front, overlooking the river
- Fitted kitchen with a range of units and space for appliances
- Double bedroom with built-in wardrobe
- Separate well-appointed bathroom with shower and vanity unit
- Double glazed windows and electric heating
- As well as the private front door, there is access to the communal entrance at ground floor level to the rear
- Conveniently located allocated parking space
- Landscaped communal gardens for residents to enjoy
- A stone's throw from a range of bars, restaurants, the train station and main shopping areas
- Sold with no upward chain

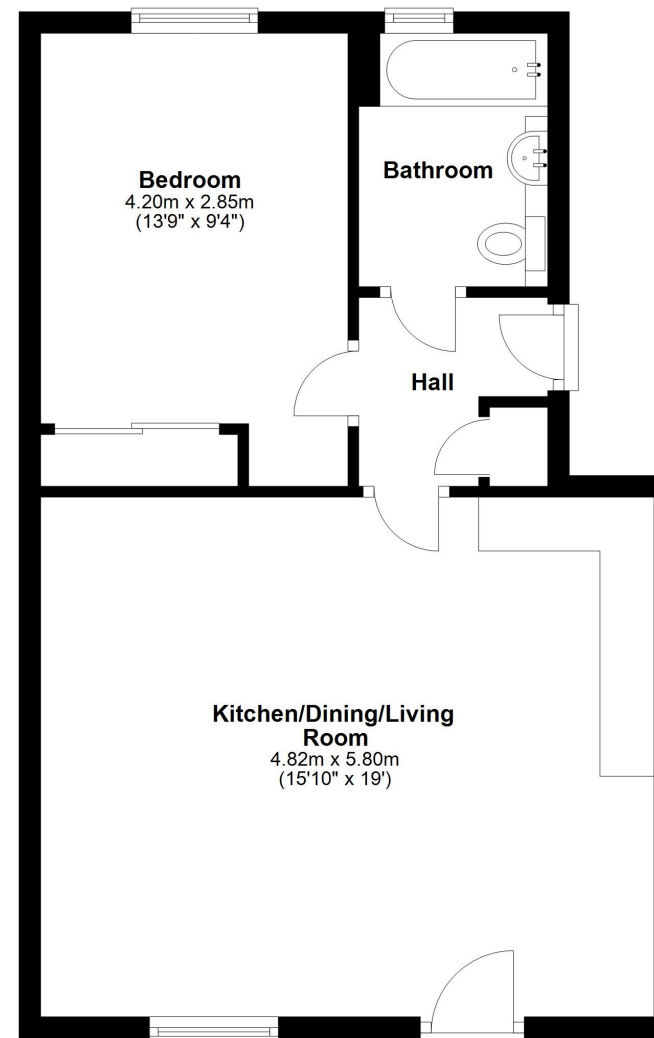
Cooper Green Pooks
3 Barker Street
Shrewsbury
SY1 1QF

www.cgpooks.co.uk
sales@cgpooks.co.uk
01743 276666



Ground Floor

Approx. 47.5 sq. metres (511.5 sq. feet)



Total area: approx. 47.5 sq. metres (511.5 sq. feet)







26 Benbow Quay, Shrewsbury, SY1 2DL

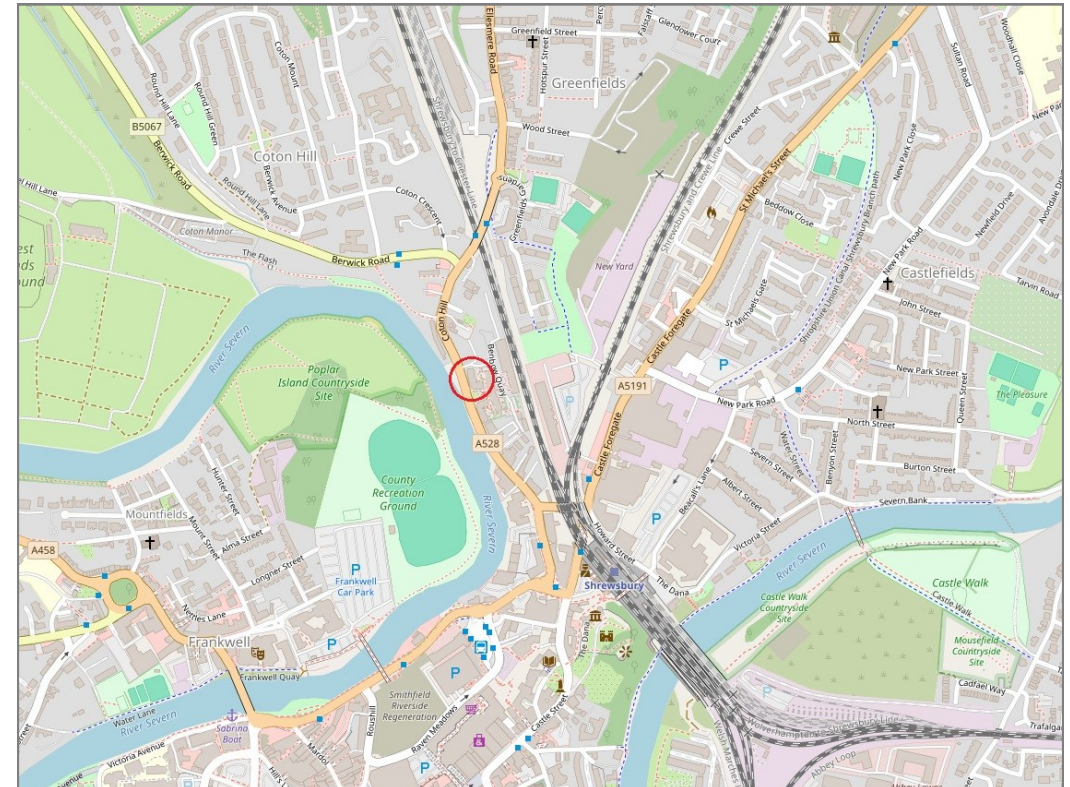
£149,000 Leasehold — 1 bedroom apartment

sales@cgpooks.co.uk

rightmove 

 OnTheMarket.com

 **RICS**
Regulated by RICS



BOUNDARIES NOT CONFIRMED

Local Authority
Council Tax
EPC Band
Services

Shropshire Council
Band A
Band D
Mains water, electricity and drainage are connected.
Electric heating.

Tenure
Lease Length
Service Charge
Ground Rent

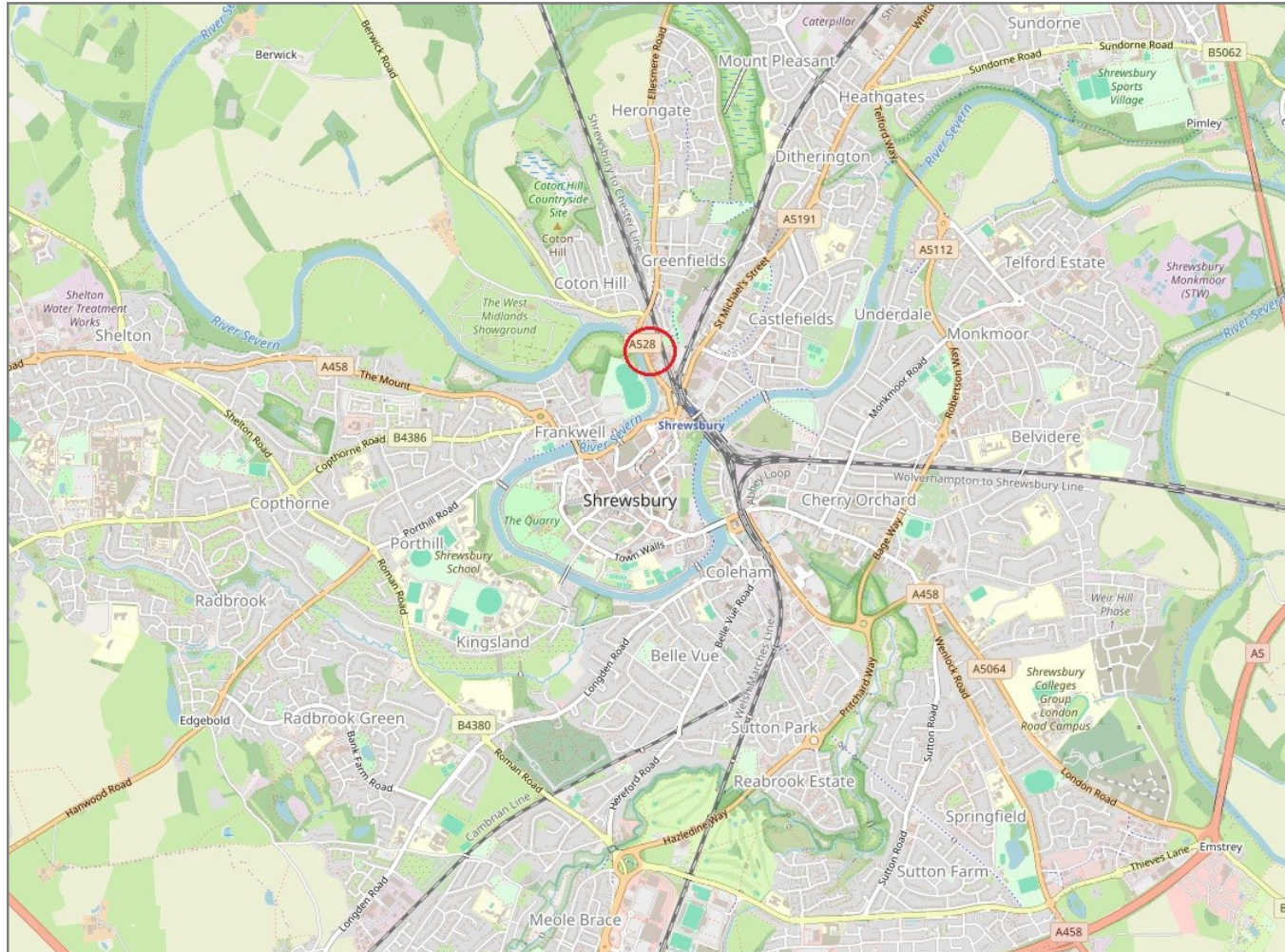
Leasehold
199 years from 2005
£1,400 per annum
£100 per month

26 Benbow Quay, Shrewsbury, SY1 2DL

Coopergreenpooks.co.uk

£149,000 Leasehold — 1 bedroom apartment

sales@cgpooks.co.uk



IMPORTANT NOTICE: Cooper Green Pooks for themselves and for the lessors or vendors of this property whose agents they are give notice that: 1 No appliances, services or service installations have been tested and no warranty as to suitability or serviceability is implied. Any prospective purchaser or lessee is advised to obtain verification from their surveyor or solicitor. 2. The particulars are set out as a general outline only for the guidance of the intended purchasers or lessees and do not constitute, nor constitute part of, an offer or contract. 3. All descriptions, reference to condition and necessary permissions for use and occupation and other details are given in good faith and are believed to be correct but any intending purchasers or lessees should not rely on them as statements or representation of fact but satisfy themselves by inspection or otherwise as to the correctness of each of them. 4. No person in the employment of Cooper Green Pooks has any authority to make or give any representation or warranty whatsoever in relation to this property. 5. All rentals and prices are quoted exclusive of Stamp Duty, legal and surveyors fees and any other associated purchasers or lessees costs. 6. Floor plans are indicative only and should not be relied on. 7. The plan showing the boundary of the property is indicative only and has not been checked against the legal title so should not be relied on. 8. All dimensions, floor areas and site areas are only approximate and should not be relied on. Dimensions are generally maximum room dimension.