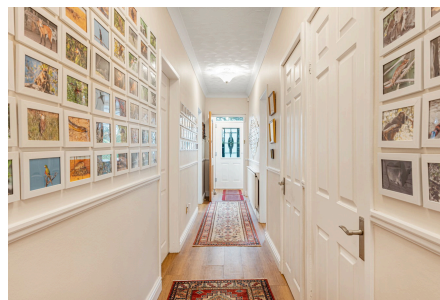


## Lowbrook Lane, Tidbury Green, Solihull, B90 1QR

Offers Over £700,000



Offering exceptional space, flexibility and scope, this substantial detached home extends to approximately 2,447 sq ft and is perfectly suited to large or growing families, those seeking home-working space, or buyers requiring adaptable accommodation. Early viewing is highly recommended to appreciate the scale and versatility of this impressive property.

## Key Features

- Approximately 2500 sqft of versatile accommodation
- Five / Six Bedrooms offering flexible living
- Separate dining room and kitchen/breakfast room
- Principal bedroom with en-suite shower room
- Large mature rear garden
- Substantial detached home arranged over two floors
- Impressive dual-aspect lounge plus additional reception room
- Study ideal for home working
- Integral garage and utility room
- Ample driveway for several vehicles



Total area: approx. 227.4 sq. metres (2447.2 sq. feet)

This floor plan is for illustration purposes only, this is not intended to be a measured/scaled survey or comply with RICS guidelines. All measurements (including total floor area) openings, orientation and floor area are approximate. No details are guaranteed, they cannot be relied upon for any purpose and do not form part of any agreement. A party must rely upon its own inspection(s). No responsibility is taken for any error, omission, or mis-statement. Plan produced using PlanUp.