



Hunters Close, Tring HP23 5QB



Brown & Merry are delighted to offer this one bedroom Cluster Home, located in a quiet cul-de-sac in Tring. The house comprises of an entrance porch into a good sized well presented lounge/ diner. The kitchen opens on to the back of this room and is fitted with integrated appliances and finished to a modern standard. Upstairs is a bathroom with an over-the-bath shower and fantastic sized bedroom complete with fitted wardrobes. The property also benefits from boarded loft space for additional storage. Externally there is an allocated parking space and also on road parking. There is a small courtyard area with picnic bench.

Location

Hunters Close is a popular cul-de-sac about a quarter of a mile from Tring's charming High Street which sees independently run shops, cafes and restaurants alongside well known High Street brands such as Marks & Spencer and Costa Coffee. The Farmers market in Church Square is held every Friday. Tring is surrounded by beautiful Chilterns countryside providing endless walks and the Grand Union Canal runs along the edge of town. Tring Park is an expansive green space of fields and woodland which hikers and dog walkers will make a bee line for. The train station offers a fast and frequent service to London Euston (approximately 38 minutes) as well as Milton Keynes and the north, making Tring a popular choice for commuters. The A41 dual carriageway can be joined at Tring, linking the M25 motorway at junction 20 giving convenient access to the London airports.

Tring offers a choice of infant and primary schools, and the recently modernised Tring Secondary School. There is also Tring School for the Performing Arts in town and further private education at Berkhamsted School five miles away. Sports enthusiasts will be glad to hear there is something for everyone; a public sports centre and several gyms, football, cricket, rugby, tennis and bowls clubs and an abundance of excellent golf courses in the nearby area.





welcome to Hunters Close, Tring

- Chain Free
- Freehold House
- Modern Open Plan Living Space
- Fitted Kitchen With Appliances
- Double Glazing And Gas Heating

Tenure: Freehold EPC Rating: C

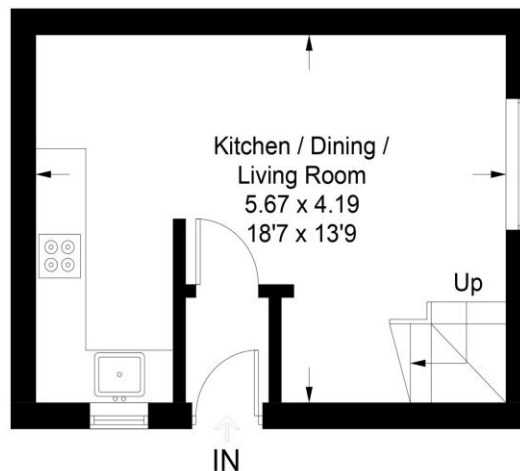
Council Tax Band: B

£240,000

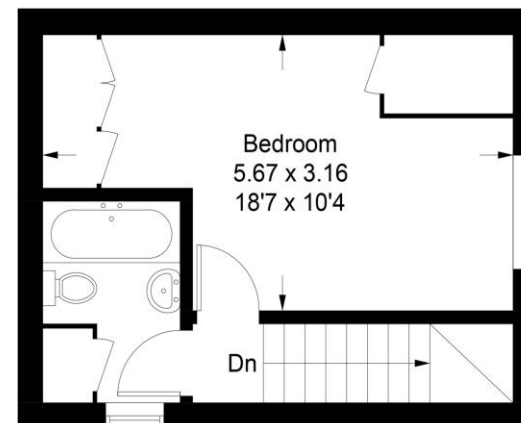
A modern cluster home in a peaceful setting in the Grove area of Tring, close to amenities and countryside walks. Parking and garden. Chain free

Hunters Close

Approximate Gross Internal Area = 47.6 sq m / 512 sq ft



Ground Floor



First Floor

This plan is for layout guidance only. Not drawn to scale unless stated. Windows and door openings are approximate. Whilst every care is taken in the preparation of this plan, please check all dimensions, shapes and compass bearings before making any decisions reliant upon them. (ID1298032)

check out more properties at brownandmerry.co.uk
see all our properties on zoopla.co.uk | rightmove.co.uk | sequencehome.co.uk



Property Reference:
TRG105385 - 0004

1. MONEY LAUNDERING REGULATIONS Intending purchasers will be asked to produce identification documentation at a later stage and we would ask for your co-operation in order that there is no delay in agreeing the sale. 2. These particulars do not constitute part or all of an offer or contract. 3. The measurements indicated are supplied for guidance only and as such must be considered incorrect. Potential buyers are advised to recheck measurements before committing to any expense. 4. We have not tested any apparatus, equipment, fixtures or services and it is in the buyers interest to check the working condition of any appliances. 5. Where an EPC, or a Home Report (Scotland only) is held for this property, it is available for inspection at the branch by appointment. If you require a printed version of a Home Report, you will need to pay a reasonable production charge reflecting printing and other costs. 6. We are not able to offer an opinion either written or verbal on the content of these reports and this must be obtained from your legal representative. 7. Whilst we take care in preparing these reports, a buyer should ensure that his/her legal representative confirms as soon as possible all matters relating to title including the extent and boundaries of the property and other important matters before exchange of contracts.



01442 824133



Tring@brownandmerry.co.uk



41 High Street, TRING,
Hertfordshire, HP23 5AA



brownandmerry.co.uk