



Hillmarton Road, N7

£795,000

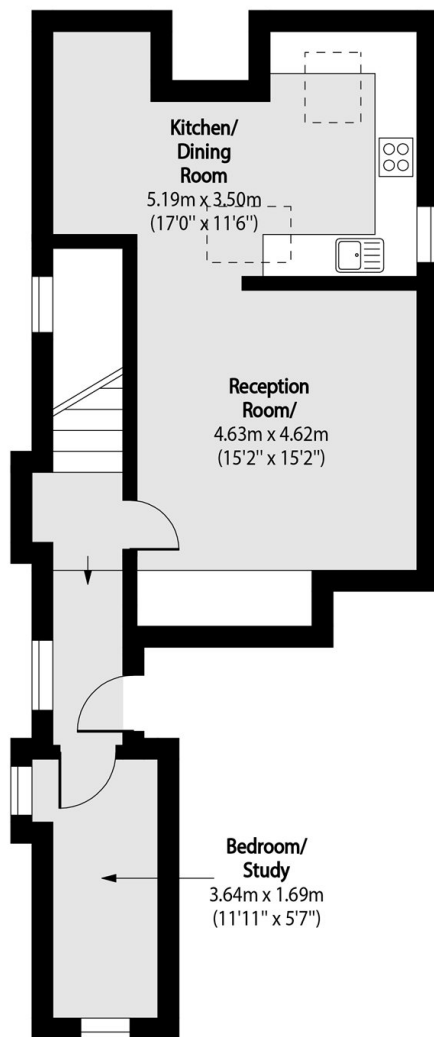
A spacious split level two bedroom apartment with a separate study area, located across the ground and raised ground floor of a Victorian conversion. The property also benefits from a private garden as well as access to communal gardens.

Perfectly placed for easy access to Kings Cross along Caledonian Road. Holloway Road and Caledonian Road stations are both nearby, as are all of the restaurants, shops and bars on Holloway Road.

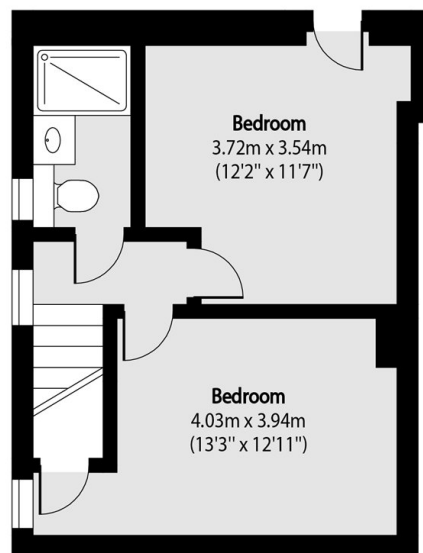
Features

- Two Double Bedroom
- Separate Study
- Open Plan Living Space
- Private Garden
- Communal Gardens
- Newly Refurbished

Hillmarton Road, London, N7



Raised Ground Floor



Ground Floor

Total area (approx): 86.40 sq m (930 sq. ft)