





📍 4 Foxley Fields, Urchfont, Devizes, Wiltshire, SN10 4SN

🏠 £185,000

A well-presented 1-bedroom home in the sought after village of Urchfont, with a well-maintained large garden and off street parking.

- 1-bedroom home
- Larger garden than you might expect
- Off street parking
- Newly fitted bathroom
- Sought after village of Urchfont
- Ideal first purchase or downsize

🏡 Freehold

🏠 EPC Rating D





A well presented one bedroom home, ideal for first time buyers, downsizers or those seeking a manageable village property, situated within the popular village of Urchfont.

The accommodation is thoughtfully arranged, with the ground providing an open plan kitchen and reception space, creating a practical and comfortable living area suited to both everyday use and entertaining. Bay style patio doors form an attractive feature, allowing plenty of natural light and opening directly out onto the garden, helping to bring the outside in during the warmer months.

Upstairs, there is a good sized double bedroom along with a newly fitted shower room, finished in a modern style.

Externally, the rear garden is larger than might be expected for a property of this type and has been attractively maintained, with a lawn area, established flower beds and space to sit and enjoy the surroundings. The property also benefits from off street parking for two vehicles, adding to its practicality.

#### **Situation**

Foxley Fields occupies a pleasant setting on the edge of this highly regarded village. Urchfont itself is a thriving quintessentially English village- renowned for its eclectic mix of fine period houses and cottages surrounding both the village pond and The Green. Village amenities include a primary school, general store with post office, church, dental surgery, garage, pub and cricket club. There is also an extremely popular annual scare crow festival which generates funds for the various village clubs/societies. The busy market town of Devizes is only 5 miles away and the major centres of Bath, Salisbury and Swindon are all within commuting distance. A mainline railway station can be found in nearby Pewsey (10 miles).

#### **Property information**

Electric heating. We are advised mains water, electricity and drainage are connected.

Tenure: Freehold

EPC rating: D

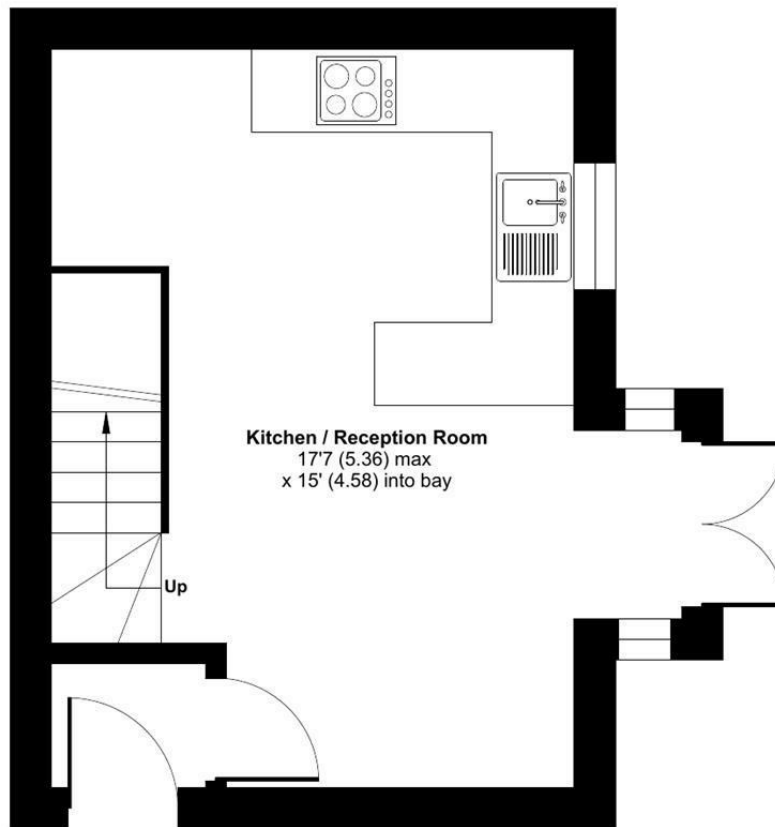
Council tax band: B



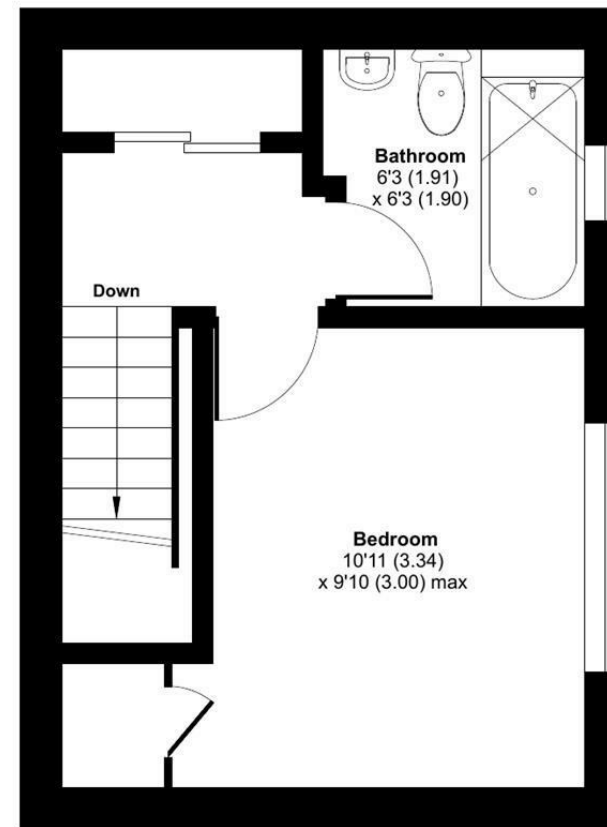
## Foxley Fields, Urchfont, Devizes, SN10

Approximate Area = 450 sq ft / 41.8 sq m

For identification only - Not to scale



GROUND FLOOR



FIRST FLOOR

 Floor plan produced in accordance with RICS Property Measurement 2nd Edition, Incorporating International Property Measurement Standards (IPMS2 Residential). © nichecom 2026. Produced for Strakers. REF: 1415869

Disclaimer These particulars, whilst believed to be accurate are set out as a general outline only for guidance and do not constitute any part of an offer or contract. Intending purchasers should not rely on them as statements of representation of fact, but must satisfy themselves by inspection or otherwise as to their accuracy. No person in this firm's employment has the authority to make or give any representation or warranty in respect of the property. All measurements and distances are approximate only. Your home is at risk if you do not keep up repayments on a mortgage or other loan secured on it.