

Visit Alternative Available



cubitt & west

## Price

£2,100 PCM

Fees Apply



Available 06/07/26

Clitherow Gardens,  
Southgate, RH10

cubitt & west  
Helping you move forwards



## Main Features

- Four Bedroom Detached
- Central Location
- Garden
- Central Heating
- Driveway
- Close to Transport Links



Deposit required is £2,423.08  
Crawley District - Council Tax Band Tax Band E

Renting a property is a big commitment and we recommend that you visit the local authority website and these websites which offer helpful information and advice about letting

[www.gov.uk/government/publications/how-to-rent](http://www.gov.uk/government/publications/how-to-rent)

[www.gov.uk/private-renting](http://www.gov.uk/private-renting)

[www.cubittandwest.co.uk/renting/tenancy-fees-individuals/](http://www.cubittandwest.co.uk/renting/tenancy-fees-individuals/)

[www.gov.uk/green-deal-energy-saving-measures](http://www.gov.uk/green-deal-energy-saving-measures)

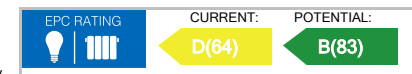
Call Crawley 01293 544100 ■ [cubittandwest.co.uk](http://cubittandwest.co.uk)

IMPORTANT INFORMATION: Please contact our Lettings Team who will confirm the total costs involved in renting this property. For clarification, we wish to inform the prospective tenant that we have prepared these details as a general guide. The agent has not carried out a detailed survey nor tested the services, appliances, or specific fittings (unless otherwise stated), and no warranty can be given as to their condition. All room measurements are taken at floor level. We strongly recommend that all the information which we provide about the property is verified by yourself and your advisers. The contents of this publication are © Cubitt & West, 2015. Cubitt & West is a trading name of Arun Estates Limited Registered in England No. 2597969

## Accommodation

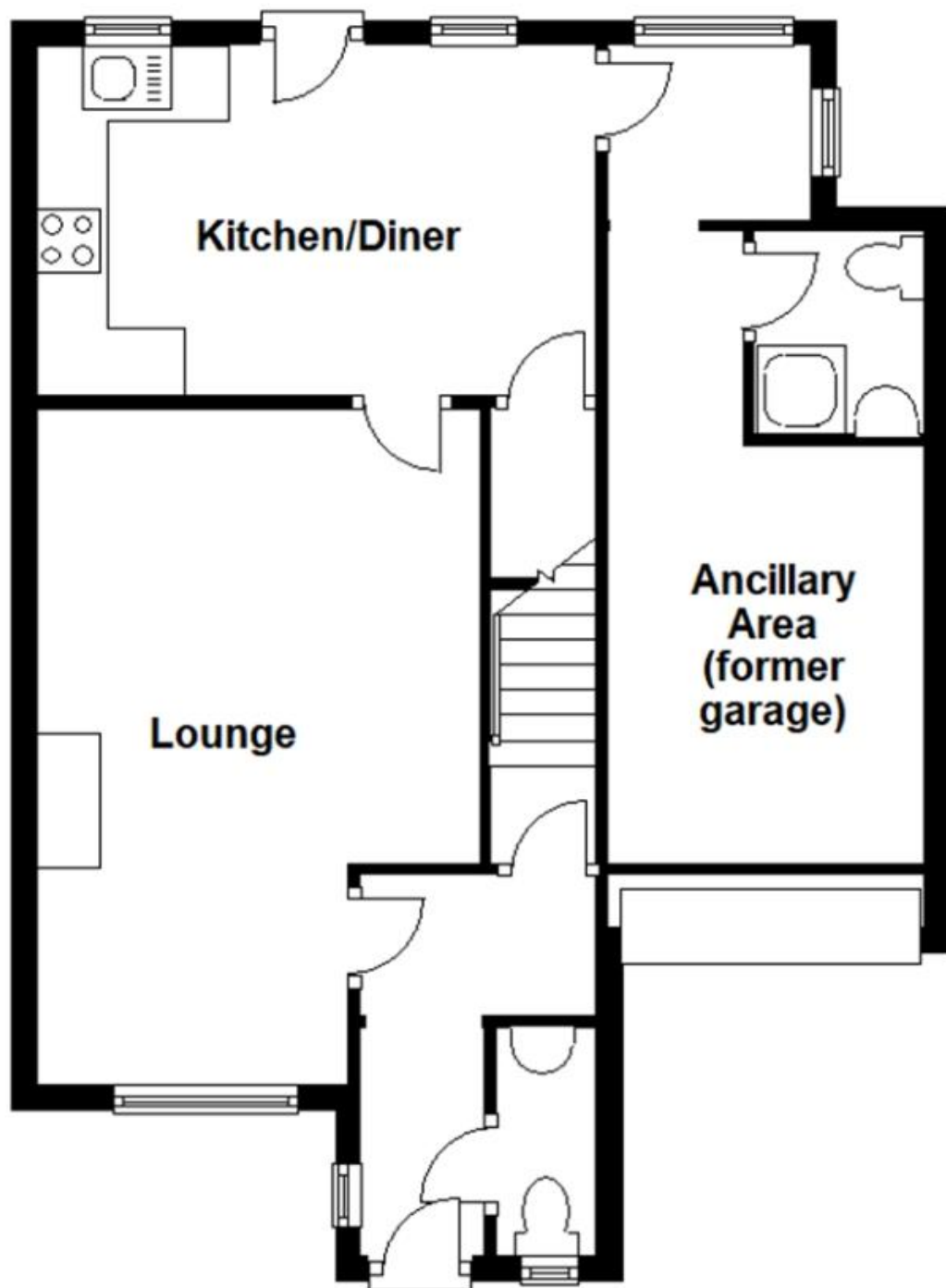
- Hallway
- Cloakroom
- Lounge
- Kitchen/Diner
- Bedroom 3 (Former Garage)
- En-Suite
- Bedroom 1
- En-Suite
- Bedroom 2
- Family Bathroom

- Bedroom 4
- Driveway



## Ground Floor

Approx. 566.9 sq. feet



## First Floor

Approx. 369.9 sq. feet

