

Rostrevor Mews, SW6

£1,650,000

BRIK





Rostrevor Mews

£1,650,000 | 3 Bed | 1,869 | 173 | LBHF band G | £111,750
 LEASEHOLD | MAISONETTE | SQ FT | SQ M | COUNCIL TAX | STAMP DUTY

A beautifully presented mews house in a quiet location close to Parsons Green station.

Rostrevor Mews is one of a pair of recently built homes designed by award winning architects Munden Robinson. This outstanding property extends to 1869 sq ft (173 sq m) of living space. On the first floor is a large open plan living space, which includes a reception room with excellent natural light, a modern bespoke kitchen with integrated Gaggenau & Miele appliances, with ample space for dining and a private balcony. The ground floor comprises a principal bedroom suite with an impressive en suite bathroom and extensive fitted wardrobes, two further double bedrooms with fitted wardrobes, a large media room with an air filtration system and a family bathroom. This stylish property also has off-street parking.

Rostrevor Mews is positioned between Rostrevor Road and Chesilton Road which run north off Fulham Road. The advantage of this area is its proximity to all the local amenities and restaurants on Fulham Road, as well as nearby Parsons Green. Along with the roads to the south and those running off Parsons Green itself, it's without question one of the most sought after areas in Fulham. The closest underground station is Parsons Green (District Line, Zone 2) which is only 500 meters away. You can also catch regular buses from the Fulham Road towards Fulham Broadway, Chelsea and central London.

- ✓ Mews House
- ✓ New 999-year lease
- ✓ 3 double bedrooms, 2 bathrooms
- ✓ Fitted wardrobes throughout.
- ✓ Media Room
- ✓ Large open plan kitchen/reception room
- ✓ Award winning architect design
- ✓ Off street parking
- ✓ Still under an insurance backed warranty (Expires December 2025)
- ✓ EPC – Brating



Mathew Goss

📞 020 7384 6790

✉️ mathew@brik.co.uk



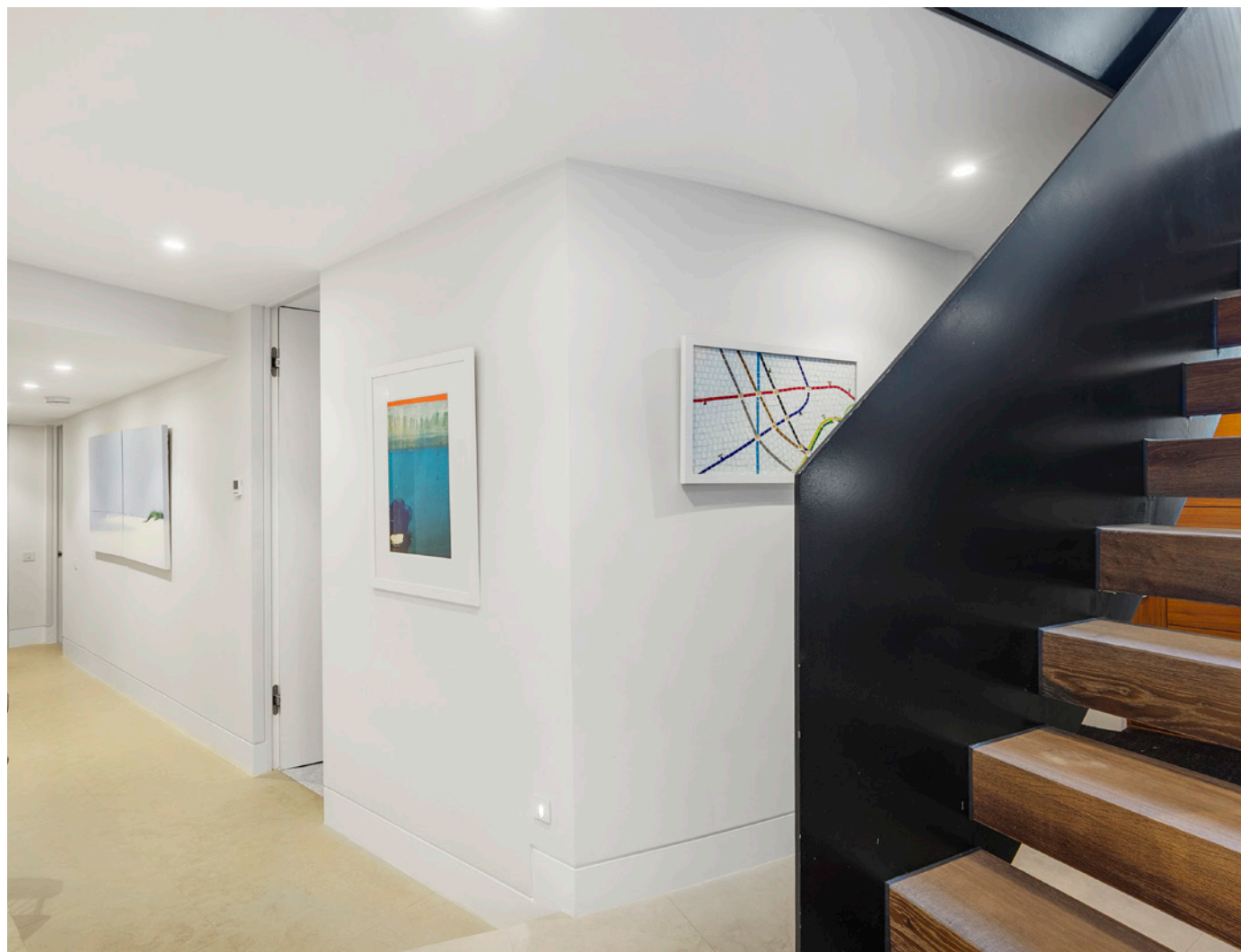












FULHAM AREA GUIDE

Central Fulham North

This row of tree-lined streets, is home to a mix of family houses and ranks top of the list for sought-after Fulham locations.

There's a wide range of property here, from the beautiful semi-detached 'villas' on the East side of Lilyville Road, to the flats at the Northern end of Rostrevor Road and Radipole Road. In general the houses are slightly larger than those in Parsons Green (with the exception of the Lion houses in the Peterborough Estate) and can reach up to 3000 sq ft with basement.

Fulham Road itself is the focus of the action – with its independent cafes, restaurants and bus routes – but Parsons Green is also very nearby. Centrally located, large houses on tree-lined streets. Many have potential for extension into the basement with the added benefit of being close to Parsons Green station.

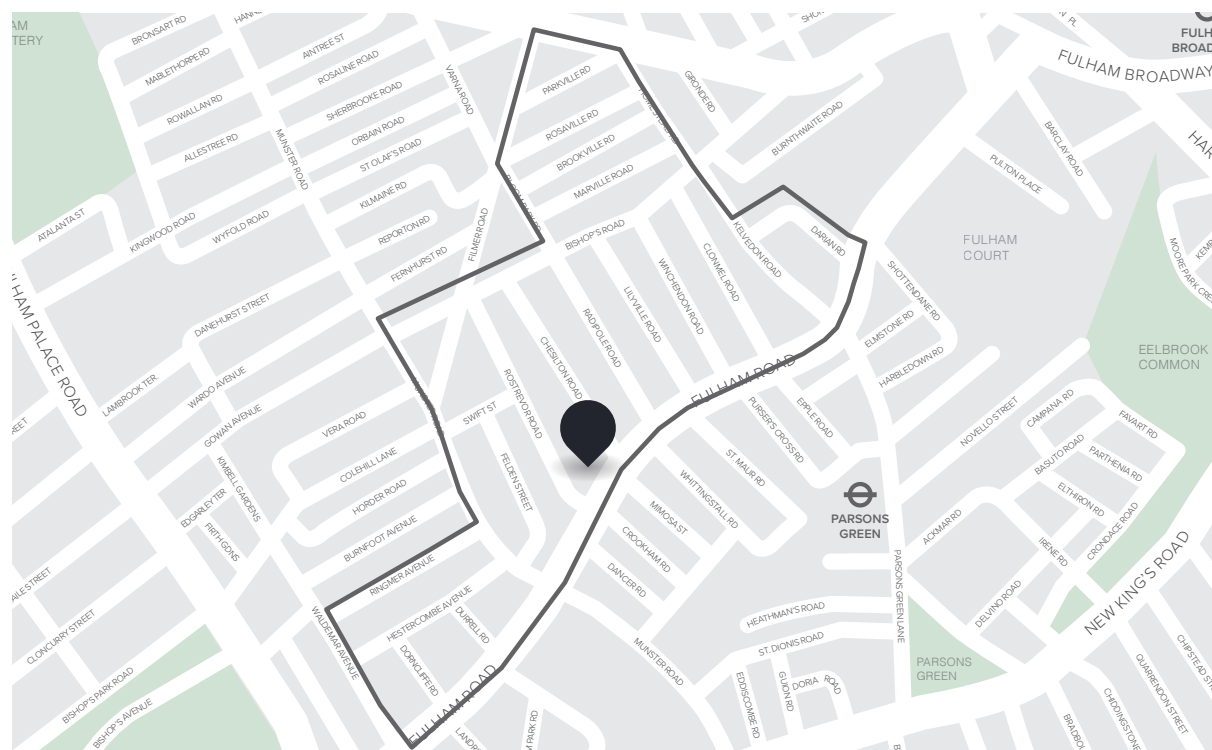
CLOSEST:

- 🚶 Parsons Green (8 mins)
- 🚶 West Brompton (27 mins)
- 🚶 Bishops Park (13 mins)

KEY:

- Property location
- 'Central Fulham North' area of Fulham

[Read all our Fulham area guides here](#)





Ground Floor

First Floor

Important notice Brik give notice that: all text, photographs and plans on these brochure are for guidance only and are not necessarily comprehensive; any areas, measurements or distances given are approximate; these details do not constitute part of an offer or contract and must not be relied upon as statements or representations of fact; it should not be assumed that the property has all the necessary planning permissions and building regulations approvals; we are not authorised to give any representations or warranties in relation to this property whatsoever; potential purchasers must satisfy themselves as to the correctness of all details by inspection or otherwise. Brik, 77 Parsons Green Lane, Fulham, London SW6 4JA Tel: 020 7384 6790 Email: hello@brik.co.uk