



Lucerne Mews, W8

£3,000 Per calendar month

A spacious one bedroom flat to rent on the first floor of a Victorian mews house, conveniently located just behind Kensington Church street and Notting Hill Gate. An opportunity for a professional individual or couple to rent a home with loads of character.

Lucerne Mews is a quiet cobbled mews and is conveniently positioned for the many local shops and amenities of both Notting Hill Gate and Kensington Church Street. The nearest underground is Notting Hill Gate (central and circle line).

Features

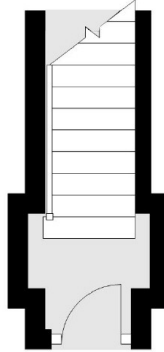
- One Bedroom
- Open Plan Living Room
- Private terrace
- Quiet mews
- Good storage
- High Ceilings



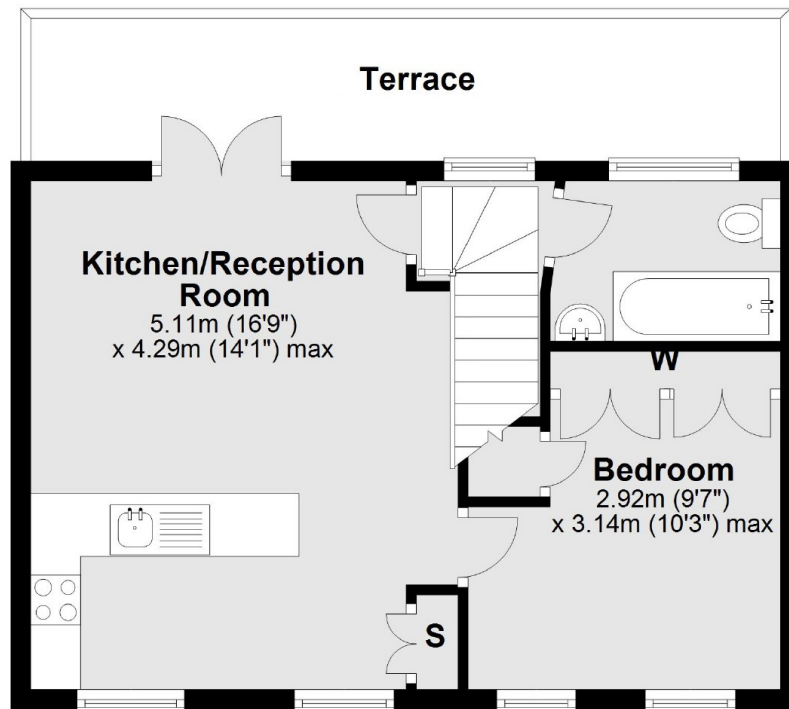
Lucerne Mews, W8



Lucerne Mews, London, W8



Ground Floor



First Floor

Total area: approx. 41.3 sq. metres (444.8 sq. feet)