



Ebony House, Chapel Road, Earith

Guide Price £360,000



- GUIDE PRICE £360,000 - £375,000
- Semi-Detached New Build House
- Sought After Village Location
- Four Generous Bedrooms
- Master Suite with Ensuite and Dressing Room
- Air Source Heat Pump
- Carport and Off Road Parking
- Viewing Highly Recommended
- Open Plan Living Accommodation
- Private Enclosed Rear Garden

FAQ'S

Tenure: Freehold

Post Code for SatNav: PE28 3PU

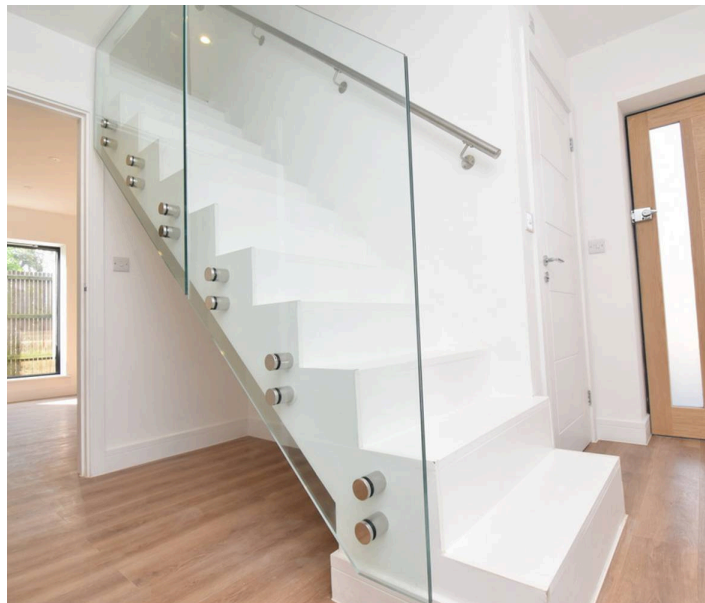
What3Words Location: speeded.rainwater.enjoys

Central Heating: Air Source Heat Pump

Property Completion Anticipated: Early 2024

School Catchment Areas: Earith Primary School and Ramsey

Abbey / Swavesey Village College

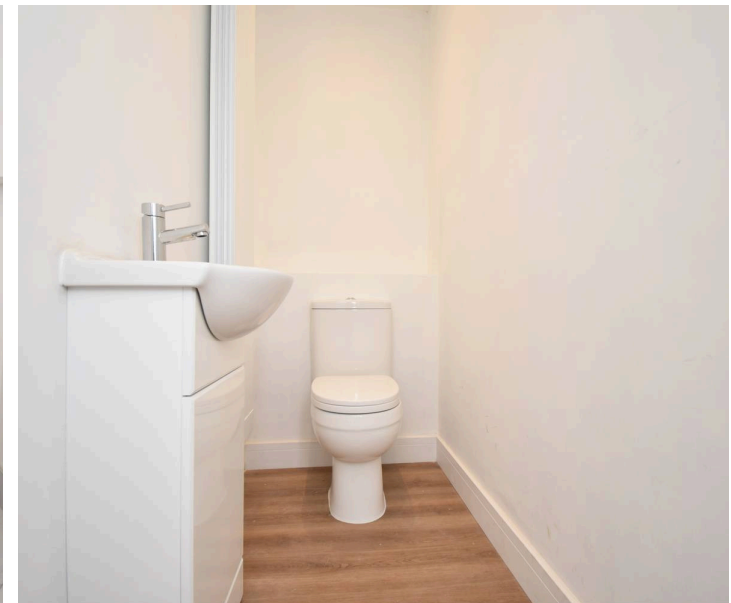
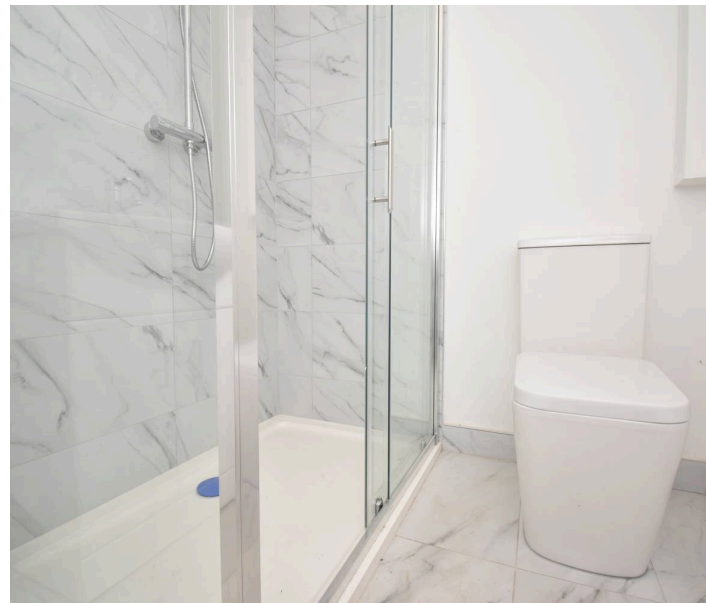
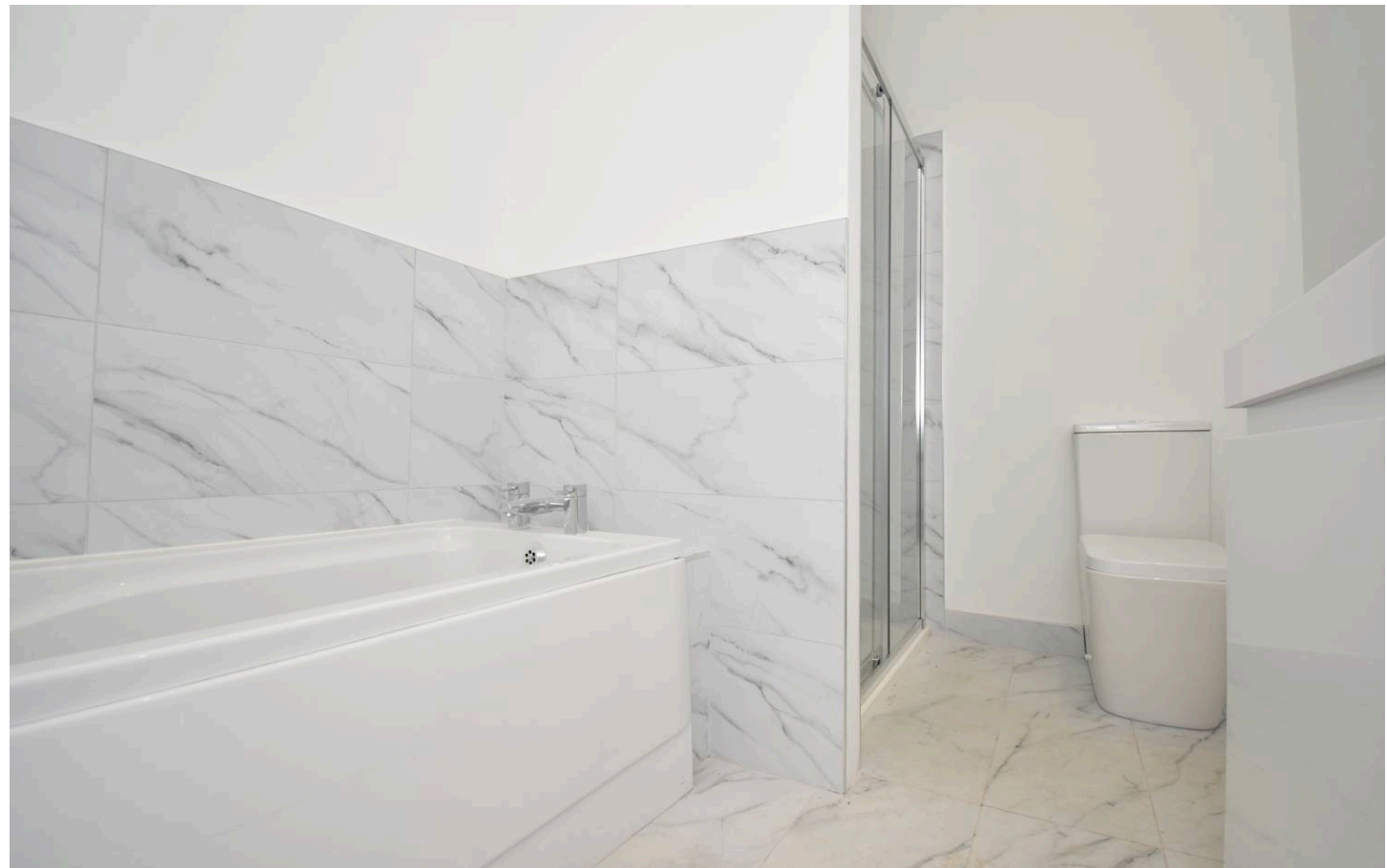




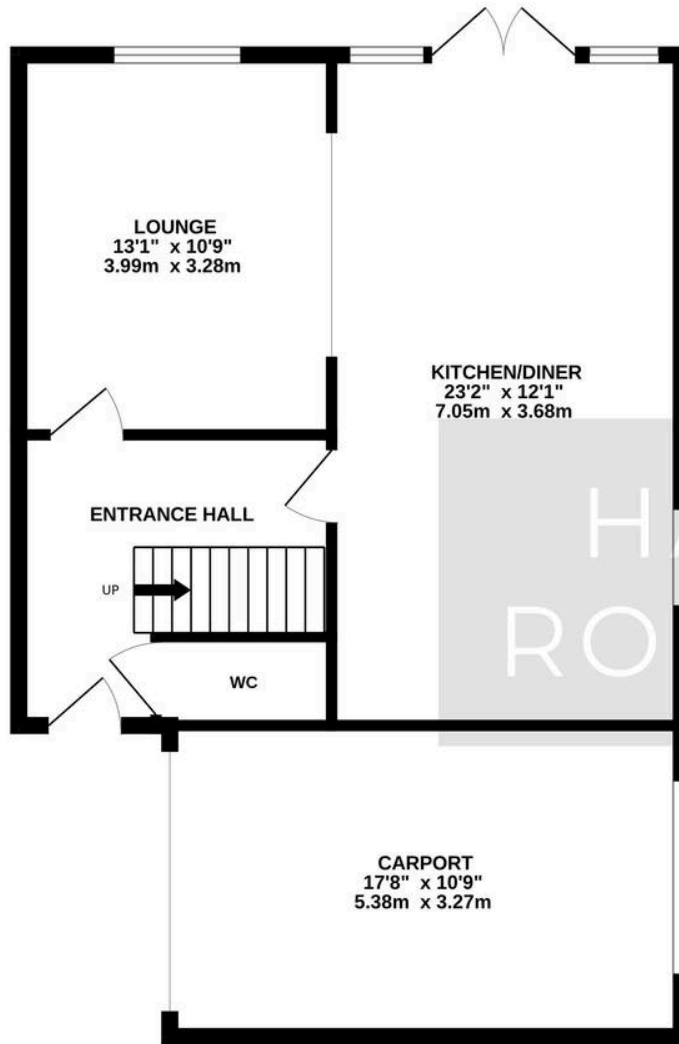
PROPERTY SUMMARY

GUIDE PRICE £360,000 - £375,000

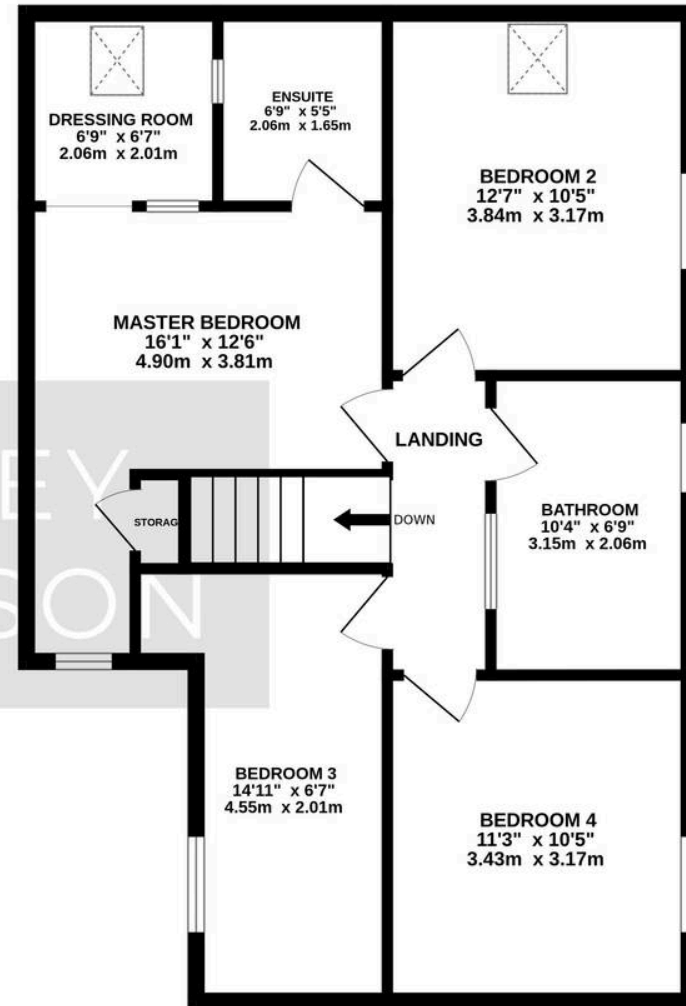
Harvey Robinson Estate Agents St Ives are delighted to be marketing for sale this bespoke individual new build property situated in the centre of the sought after village of Earith. Set back from the road and accessed via a private gravel drive, you can find this newly constructed home in a niche development of just two properties. These properties have been thoughtfully designed, and have been constructed to a high standard with many additional features and the buildings performance in mind. The ground floor offers open plan living with a separate cloakroom and lobby entrance. There is also the option to add sliding doors between the lounge and kitchen to separate the two areas if preferred. The modern handle-less kitchen incorporates an island and solid work surfaces, and is inclusive of integrated appliances throughout. French doors open onto the south facing rear garden below the projecting roof canopy, designed to offer partial shading and prevent overheating to the ground floor living area in the height of summer. A bespoke fitted turned staircase leads to the first floor accommodation, with high vaulted ceiling detail throughout. The first floor offers four double bedrooms, and the master bedroom benefits from an ensuite and dressing area. A four piece family bathroom can also be found on the first floor, with fully tiled walls and floor. Outside, the integrated carport is large enough for an SUV or transporter, or can offer the potential to convert to additional ground floor living space (STPP). Additionally, there is also allocated off road parking to the front of the property. With its feature gable and original roof design, this property offers exclusivity with its design approach, incorporating all the usual aspects of a modern new build home, but full of extra details and features normally found on larger properties. Early reservation of this rarely available property is advised.



GROUND FLOOR
717 sq.ft. (66.6 sq.m.) approx.

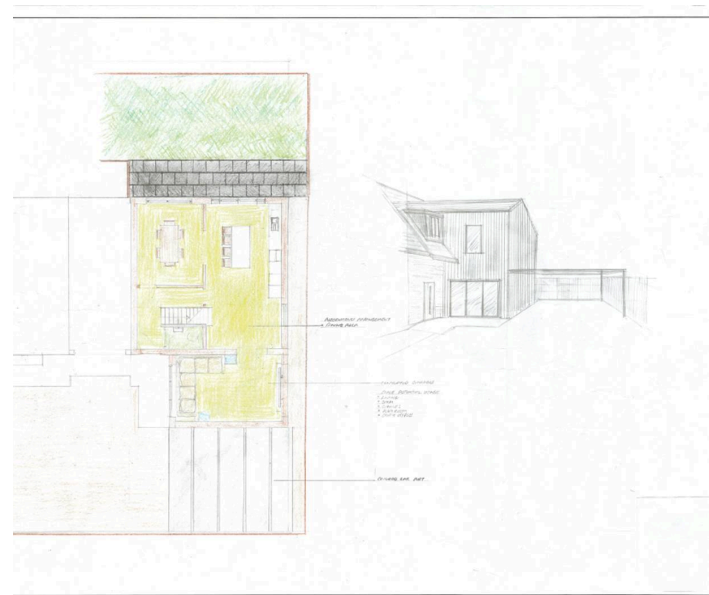


1ST FLOOR
710 sq.ft. (66.0 sq.m.) approx.



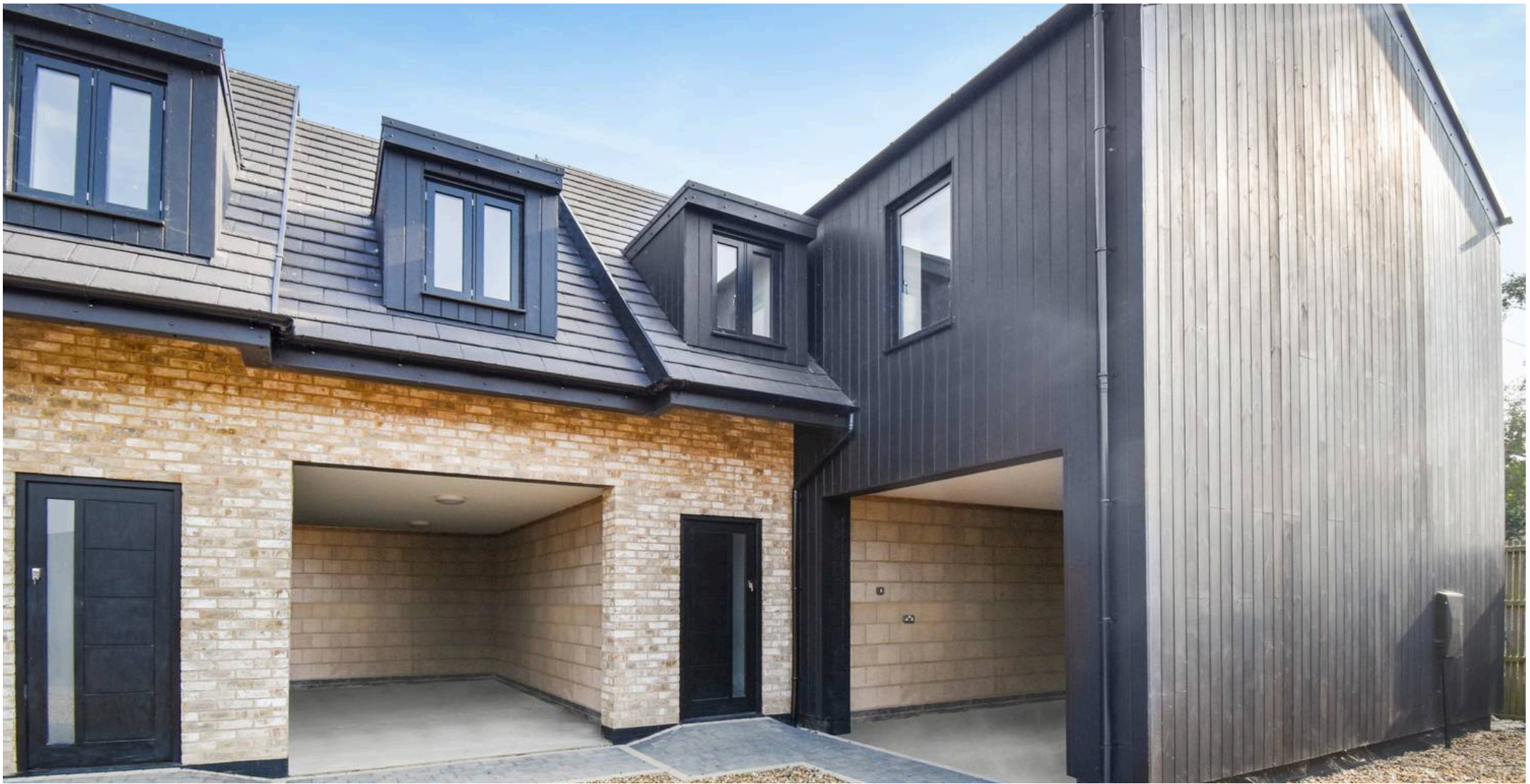
TOTAL FLOOR AREA : 1427 sq.ft. (132.6 sq.m.) approx.

Made with Metropix ©2023



LOCATION AND AMENITIES

Earith, a historic village due to its proximity to the river Great Ouse, can be found just five miles from St. Ives town centre and therefore offers quiet family living just a stones' throw from a town offering shops and amenities. The village itself offers a post office, a barber, a takeaway, and the riverside Crown pub, which is often frequented by those in the village. There is also a preschool and a primary school in the village, with the nearest secondary school being located in Ramsey or Swavesey. There are excellent countryside walks within the village, making the location perfect for dog walkers, young families, or ramblers, while the RSPB wetland nature reserve - one of the largest in the UK - offers stunning countryside walks. For those that prefer life near the water, Hermitage Marina is just a short distance away from the property and is home to many leisure boats, and the river offers additional amenities via motor boating, a rowing club, kayaking, or paddleboarding, just to name a few. Earith offers great access to the guided bus in St Ives or Longstanton, which offers a direct route to Cambridge in just over half an hour, and train stations offering fast rail connections can be found in both Ely and Huntingdon, with Kings Cross just 50 minutes away by train. By car, Cambridge can also be accessed in just over half an hour, while the historic city of Ely is just 11 miles away and can be accessed in around 20 minutes. Nearby St. Ives has a huge amount to offer homebuyers and great local amenities. In St. Ives, you will find plenty of shops and great restaurants in the area, as well as some local supermarkets.



Harvey Robinson St Ives

Harvey Robinson Estate Agents, 9 White Hart Court - PE27 5EA

01480 45 40 40

stives@harveyrobinson.co.uk

www.harveyrobinson.co.uk/

These particulars are for guidance only and do not form part of any contract. Descriptions, dimensions and references to condition are given in good faith but should not be relied upon as statements of fact. Measurements and floorplans are approximate. Services, systems and appliances have not been tested and no warranty is given. The property is offered subject to contract and availability. Purchasers must provide identification in accordance with Anti-Money Laundering regulations; a fee may apply for electronic verification. We may receive a referral fee for recommended services.