

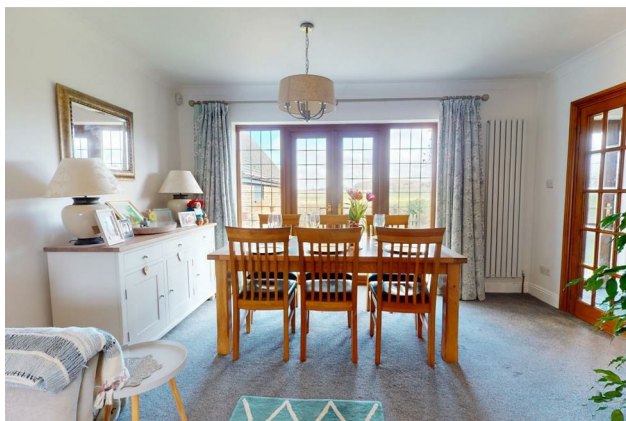
# HUNTERS®

HERE TO GET *you* THERE

**31A Coutts Avenue, Shorne, Gravesend, DA12 3HJ**

**£650,000**

**Property Images**





# HUNTERS®

HERE TO GET *you* THERE

## Property Images

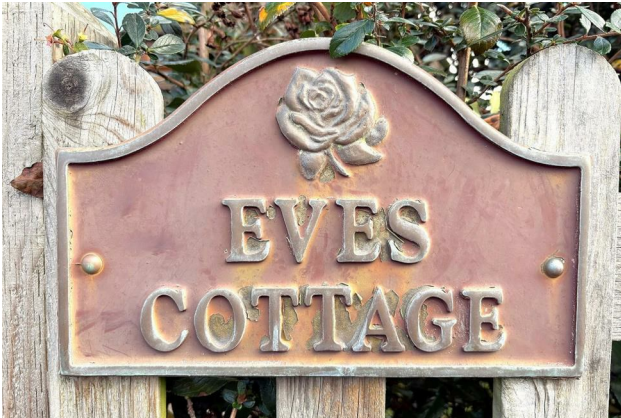




# HUNTERS<sup>®</sup>

HERE TO GET *you* THERE


## Property Images



# HUNTERS®

HERE TO GET *you* THERE

## EPC

Energy Efficiency Rating		
	Current	Potential
Very energy efficient - lower running costs		
(92 plus) A		
(81-91) B		
(69-80) C		
(55-68) D		
(39-54) E		
(21-38) F		
(1-20) G		
Not energy efficient - higher running costs		
England & Wales	EU Directive 2002/91/EC	

## Map



## Details

Type: House - Detached   Beds: 3   Bathrooms: 2   Receptions: 2  
Tenure: Freehold

Available now is this well presented, detached home located on Coutts Avenue, in the ever popular village of Shorne.

The home consists of three bedrooms, lounge/dining room, kitchen. utility room, downstairs bathroom, study and shower room.

One of the standout features of this home is the far-reaching views that can be enjoyed from the two rear bedrooms as well as the rear garden, creating a serene atmosphere that enhances the overall appeal.

The property also benefits from a gated driveway, providing off-street parking for multiple vehicles, along with a garage for additional storage or secure parking.

This residence is not just a house; it is a home that offers a wonderful lifestyle in a picturesque setting. With its combination of space, modern amenities, and stunning views, this property is an excellent opportunity for anyone looking to settle in a tranquil yet accessible location.

So call us now to arrange your viewing!

### **Features**

• THREE BEDROOMS • DETACHED • VILLAGE LOCATION • TWO RECEPTION ROOMS • DRIVEWAY • GARAGE • FAR REACHING VIEWS • EPC RATING TO FOLLOW