

## 3 Barbon Close

Bishop's Stortford

Guide Price £550,000

Welcome to Barbon Close. Nestled close to Bishop's Stortford Town Centre, close to great transport links, schools and places to see and explore, this four double bedroom home is a great find. Move-in ready and arranged over three floors, it's a superb home to grow within.

Council Tax band: E

Tenure: Freehold

- Four double bedrooms
- Driveway & Garage
- Close to Bishop's Stortford town centre
- Short walk to Hillmead & Northgate Primary Schools
- Top floor primary suite
- Easy access to the A120



**Hallway**

**WC**

**Kitchen**

9' 2" x 11' 7" (2.79m x 3.54m)

**Living Room**

16' 6" x 13' 7" (5.04m x 4.13m)

**Bedroom**

9' 6" x 9' 7" (2.89m x 2.91m)

**Bathroom**

6' 10" x 6' 2" (2.09m x 1.88m)

**Bedroom**

8' 1" x 10' 1" (2.47m x 3.07m)

**Bedroom**

8' 2" x 13' 4" (2.50m x 4.07m)

**Bedroom**

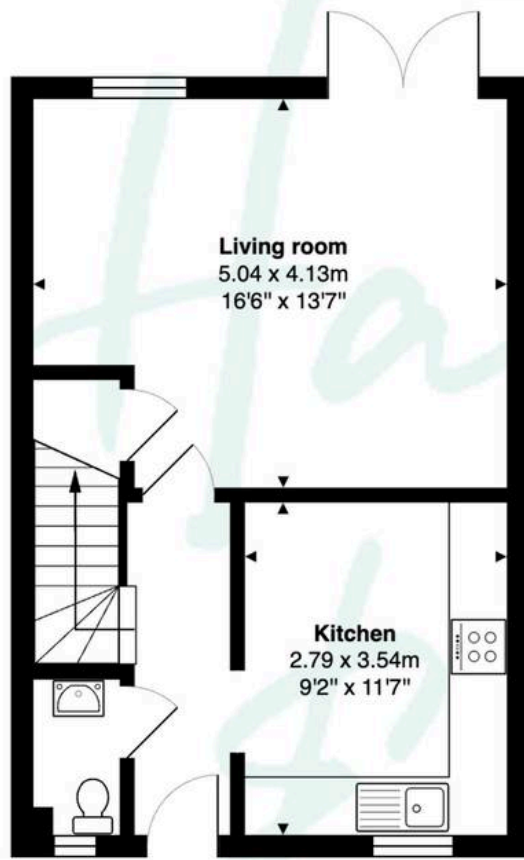
10' 7" x 18' 7" (3.22m x 5.67m)

**Ensuite Shower Room**

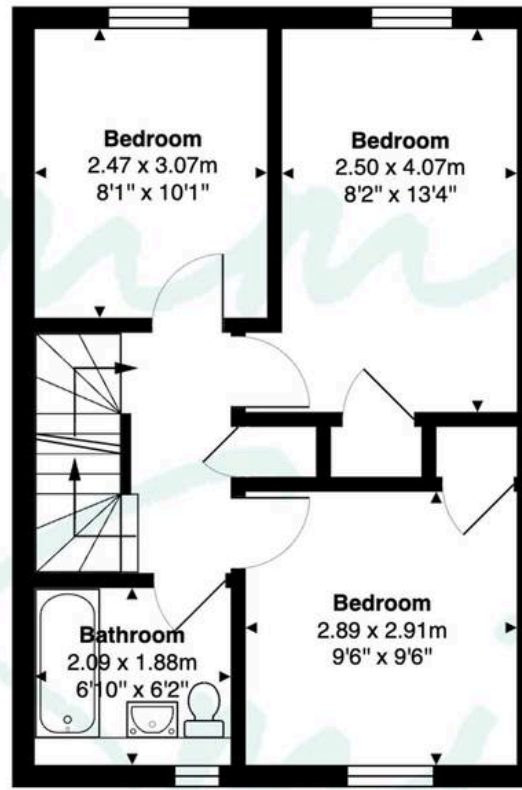
7' 6" x 5' 5" (2.29m x 1.66m)



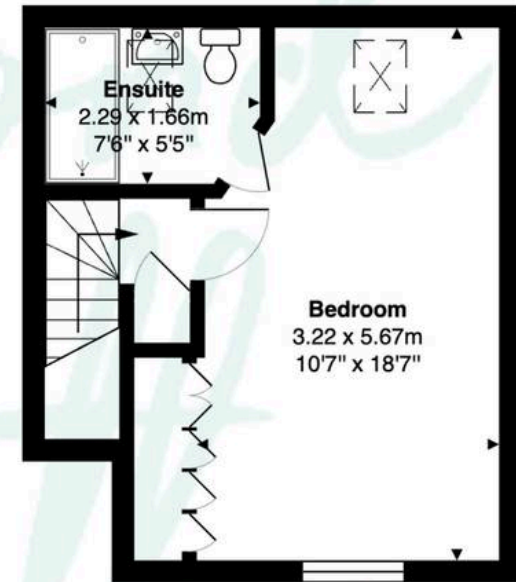




**Ground Floor**



**First Floor**



**Second Floor**

**Total Area: Approx. 123 sq m (1,324 sq ft)**

This floor plan is for illustrative purposes only and is not to scale.  
Measurements are approximate and intended as a guide. All details should be verified independently.