



Bradley Road, SW4

£370,000

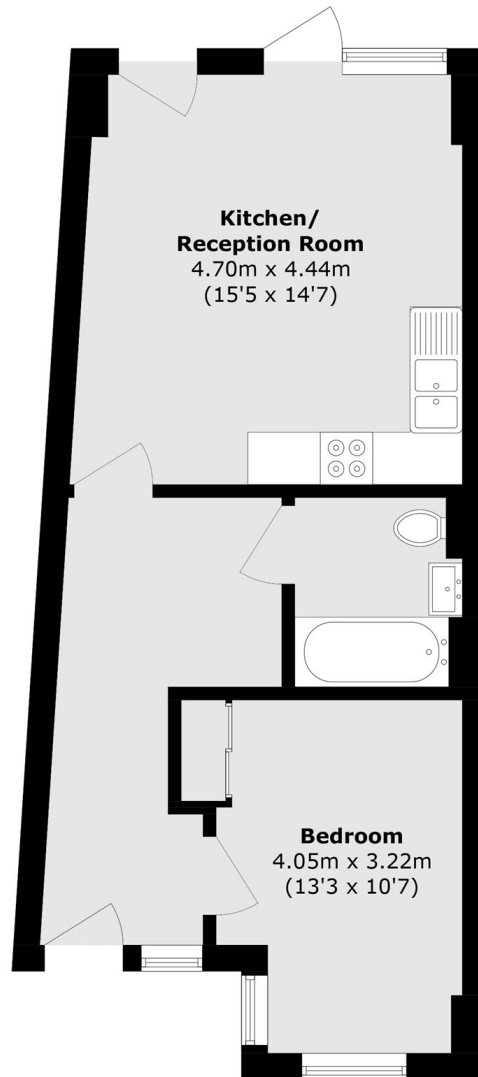
A contemporary apartment situated on the ground floor of an desirable development with a private entrance and garden. The accommodation includes an open plan reception room with an adjoining modern kitchen, a double bedroom with fitted wardrobes and a modern bathroom.

Bradley Road is situated off the Kings Avenue, conveniently located for easy access to Clapham High Street, Abbeville Village and Brixton, nearby transport links include Clapham Common (Northern line) and Brixton (Victoria line).

Features

- Private Development
- Open Plan Reception
- Modern Kitchen
- Double Bedroom
- Private Garden
- Long Lease

Bradley Road, London, SW4



Total area (approx.): 47.8 sq. m (514.5 sq. ft)