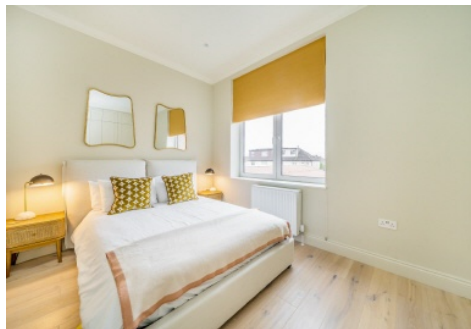


# SNELLERS

ESTATE AGENTS



## Heath Road, TW1

£1,900 PCM

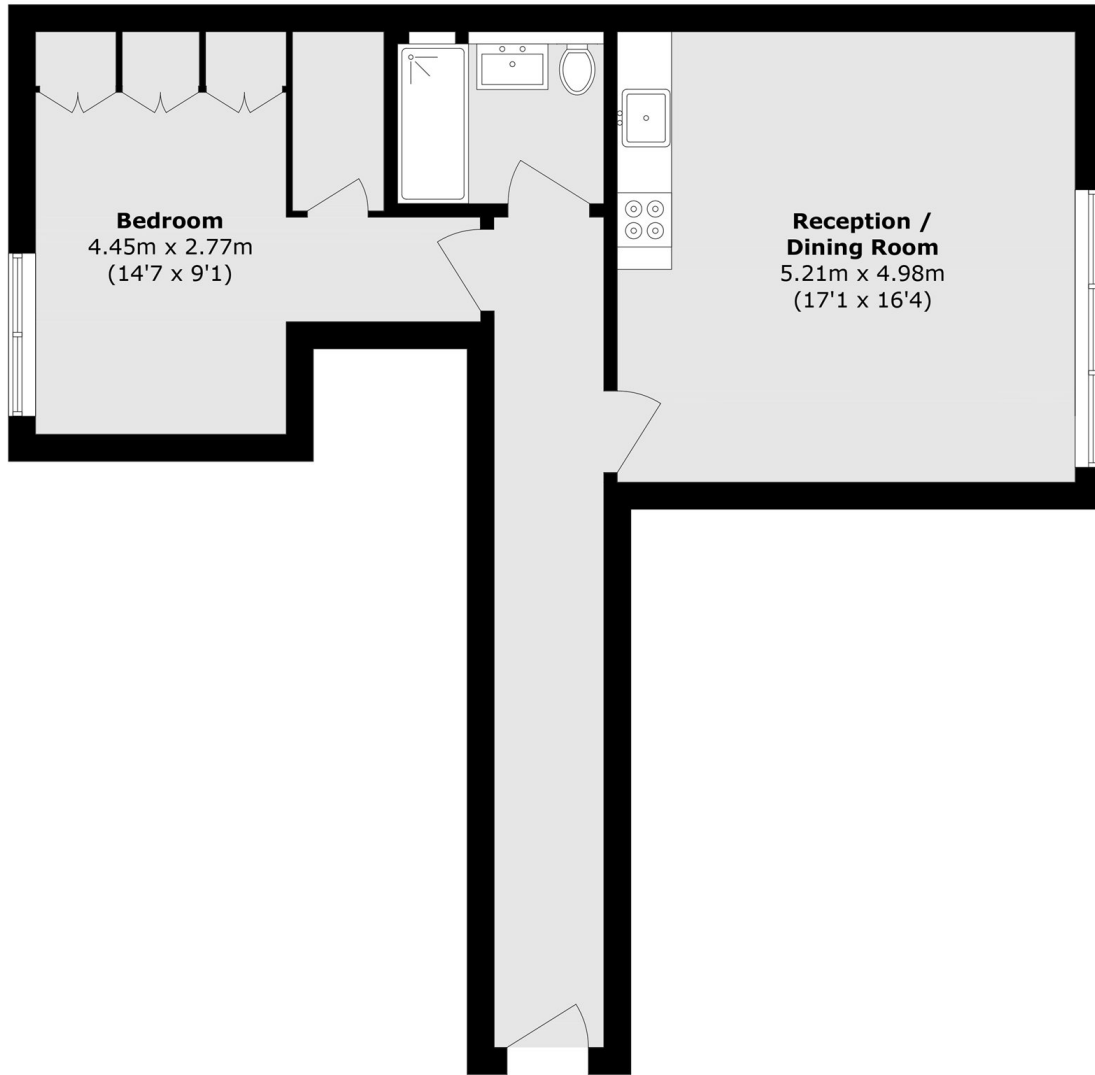
This beautifully presented one bedroom first-floor apartment is offered in excellent condition throughout and provides an exceptional blend of space, style, and convenience. Situated in the very heart of Twickenham, the property features two generously sized bedrooms, a modern bathroom, and a spacious open-plan kitchen, living, and dining area with a stylish contemporary kitchen.

Heath Road is within walking distance of Twickenham Green and just 0.5 miles to Twickenham Station, for fast trains into London Waterloo. Positioned moments from shops, cafés, and restaurants, this superb apartment combines high-spec living with unbeatable convenience in the centre of Twickenham.

- High End Finish • Central Location • One Bedroom •
- Furnished • Bright and Spacious • Close to Station •

# SNELLERS

ESTATE AGENTS



Total area (approx.): 59.2 sq. m (637.2 sq. ft)

Snellers Twickenham Lettings  
64-66 Heath Road  
Twickenham  
TW1 4BX  
020 8892 5678  
[twickenhamlettings@snellers.co.uk](mailto:twickenhamlettings@snellers.co.uk)

Energy Rating: C We aim to make our particulars both accurate and reliable. However they are not guaranteed; nor do they form part of an offer or contract. If you require clarification on any points then please contact us, especially if you're traveling some distance to view. Please note that appliances and heating systems have not been tested and therefore no warranties can be given as to their good working order