



Bedstone Way, Farcet Peterborough
£290,000 Freehold

**Sharman
Quinney**

Key Features



- Modern Detached Family Home
- Three Bedrooms + En-Suite Shower Room
- Kitchen/Diner + Lounge
- Downstairs Cloakroom + Utility Room
- Off Road Parking

Ideal Family Home located close to Local Schools, this Modern Detached House is found in the popular Village of Farcet and in brief the accommodation comprises of, Entrance Hall with stairs to the first floor landing with a built-in understairs storage cupboard, doors to the Two Piece Downstairs Cloakroom, Lounge, Kitchen/Diner which has a range of fitted base and eye level units, cupboards and drawers, worktop space with a one and a quarter stainless steel single drainer sink unit, built-in gas hob, electric oven, space for a fridge/freezer, plumbing for a dish washer, double doors to the rear garden, door to the Utility Room with a worktop cupboard under, wall mounted heating boiler, plumbing for a washing machine, door to rear. Upstairs First Floor Landing has a built-in storage cupboard and doors to Bedroom 1 with a door to the Three Piece En-

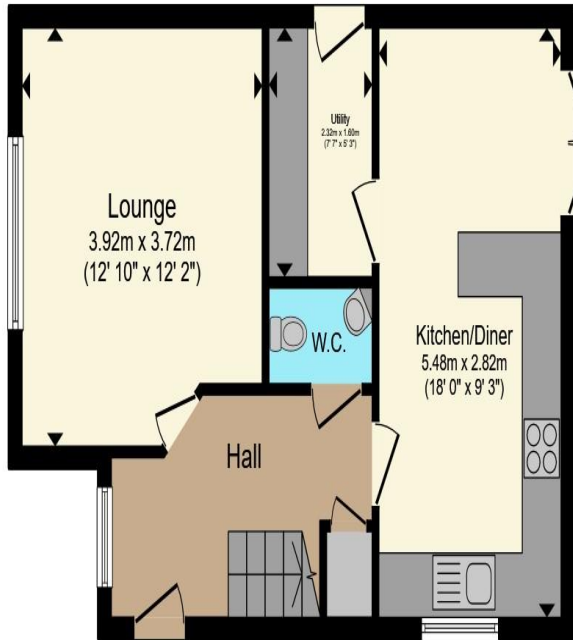


Suite Shower Room comprising of a shower cubicle with a hand held shower attachment, low level WC, pedestal wash hand basin, and to Bedrooms 2 & 3, the Three Piece Family Bathroom comprise of a panelled bath, low level WC, pedestal wash hand basin, Outside frontage is open plan , to the rear the Driveway provides Off Road Parking, Rear Garden is Enclosed, laid mainly to lawn with side gated access.

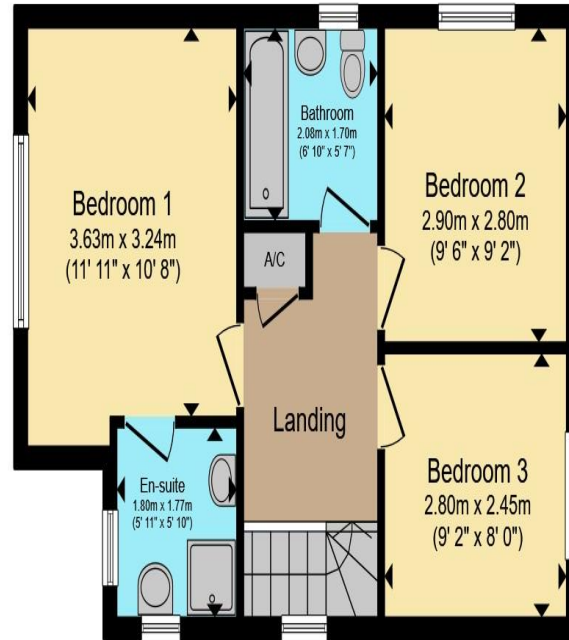
Entrance Hall:

Downstairs Cloakroom - 5'3"max x 3'max
Lounge - 12'10"max x 12'2"max (3.91m x 3.71m)
Kitchen/Diner - 18' x 9'2" (5.49m x 2.79m)
Utility Room - 7'7" x 5'3" (2.31m x 1.60m)
First Floor Landing:
Bedroom 1 - 12'8"max x 10'7"max
En-Suite Shower Room - 5'9"max x 5'8"max
Bedroom 2 - 9'5" x 9'5" (2.87m x 2.87m)
Bedroom 3 - 9'5" x 8'3" (2'87m x 2.51m)
Family Bathroom - 6'8"max x 5'6"max





Ground Floor



First Floor

Total floor area 87.2 m² (939 sq.ft.) approx

This floor plan is for illustrative purposes only. It is not drawn to scale. Any measurements, floor areas (including any total floor area), openings and orientation are approximate. No details are guaranteed, they cannot be relied upon for any purpose and they do not form part of any agreement. No liability is taken for any error, omission or misstatement. A party must rely upon its own inspection(s). Powered by www.propertybox.io

**Sharman
Quinney**

To view this property call Sharman Quinney on:
01733 245400

Selling your property?

Contact us to arrange a **FREE** home valuation.

 01733 245400

 Unit 19 Maltings Square, Broadway Shopping Centre, Yaxley, Cambridgeshire, PE7 3EW

 yaxley@sharmanquinney.co.uk

 www.sharmanquinney.co.uk



 SCAN ME



Sharman Quinney Holdings Limited is registered in England and Wales under company number 4174227, Registered Office is Cumbria House, 16-20 Hockliffe Street, Leighton Buzzard, Bedfordshire, LU7 1GN. VAT Registration Number is 500 2481 05.

1: These particulars do not constitute part or all of an offer or contract. 2: The measurements indicated are supplied for guidance only and as such must be considered incorrect. 3: Potential buyers are advised to recheck the measurements before committing to any expense. 4: Sharman Quinney has not tested any apparatus, equipment, fixtures, fittings or services and it is the buyers interests to check the working condition of any appliances. 5: Sharman Quinney has not sought to verify the legal title of the property and buyers must obtain verification from their legal representative. 6: Intending purchasers will be asked to produce identification documentation at a later stage and we would ask your co-operation in order that there will be no delay in agreeing the sale. Ref: YAX203976 - 0003

