



## Chagford Street, NW1

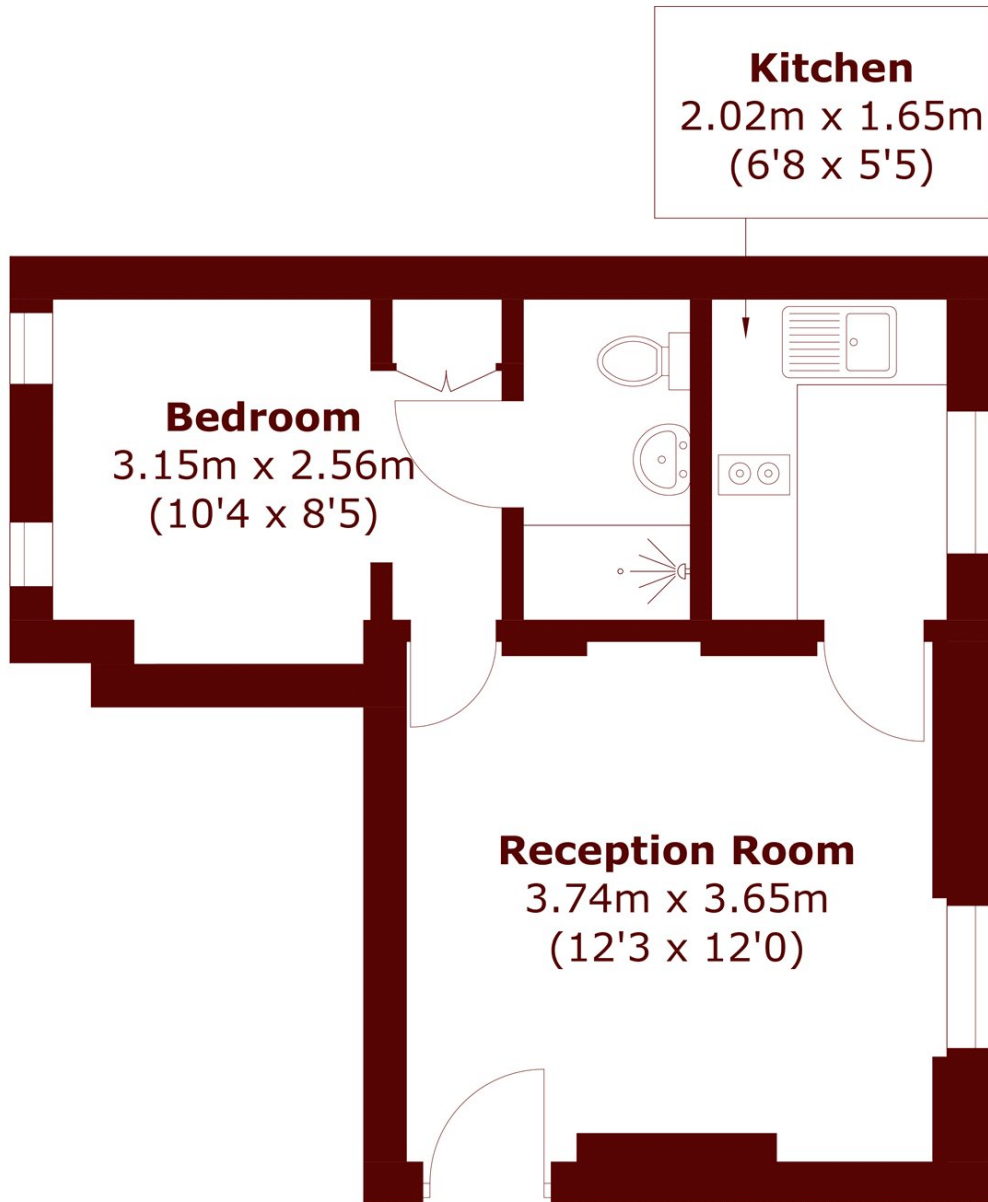
£500,000



- One Double Bedroom
- Long Lease

- Communal Garden
- Baker Street Station

- First Floor
- Wood Flooring



Total area (approx.): 29.2 sq. m (314.3 sq. ft)

**Marsh & Parsons Marylebone & Mayfair**

94 Baker Street, London,  
W1U 6FZ  
020 7935 1775