



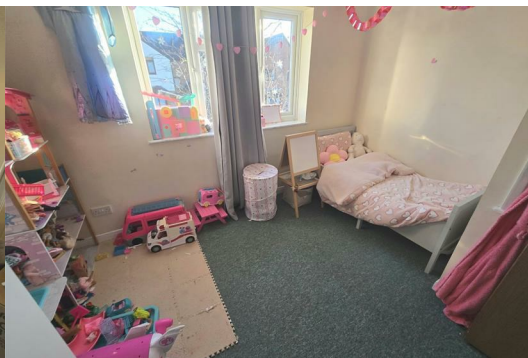
## 11 Railton Jones Close

Stoke Gifford, Bristol, BS34 8XY

**£1,350**



PLEASE READ DO NOT PHONE If you are interested in viewing this property please send us an alert through Rightmove / Zoopla using the Email Agent/request details option on their site. We will then respond with a brief questionnaire. On receipt, we will then contact. , We have this two bedroom terrace house with accommodation comprising entrance hallway, kitchen, lounge, two double bedrooms and bathroom, Electric heating, Driveway and additional allocated parking space.



## Hallway

Kitchen 5'11" x 9'10" (1.81m x 3.00m )

Lounge 11'9" x 15'9" (3.60m x 4.81m )

## Landing

Bedroom 1 10'1" x 11'10" (3.08m x 3.61m )

Bedroom 2 9'3" x 11'10" (2.84m x 3.63m )

## Bathroom

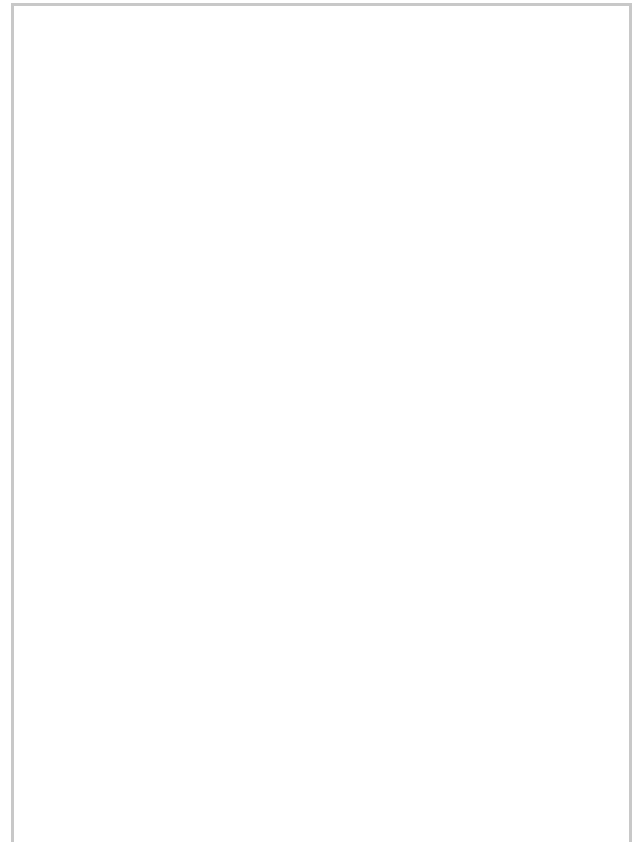
## Gardens

Allocated Parking For One Car and Driveway

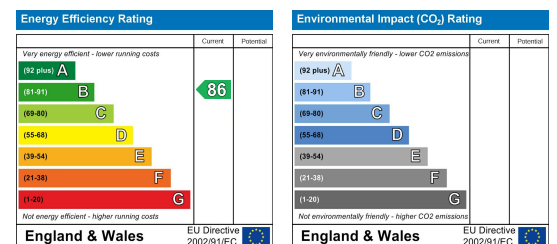
## Area Map



## Floor Plans



## Energy Efficiency Graph



These particulars, whilst believed to be accurate are set out as a general outline only for guidance and do not constitute any part of an offer or contract. Intending purchasers should not rely on them as statements of representation of fact, but must satisfy themselves by inspection or otherwise as to their accuracy. No person in this firm's employment has the authority to make or give any representation or warranty in respect of the property.

31 High Street, Kingswood, Bristol, BS15 4AA

Tel: 0117 967 9102 Email: oakestateagents@googlemail.com <https://www.estateagentskingswood.co.uk>