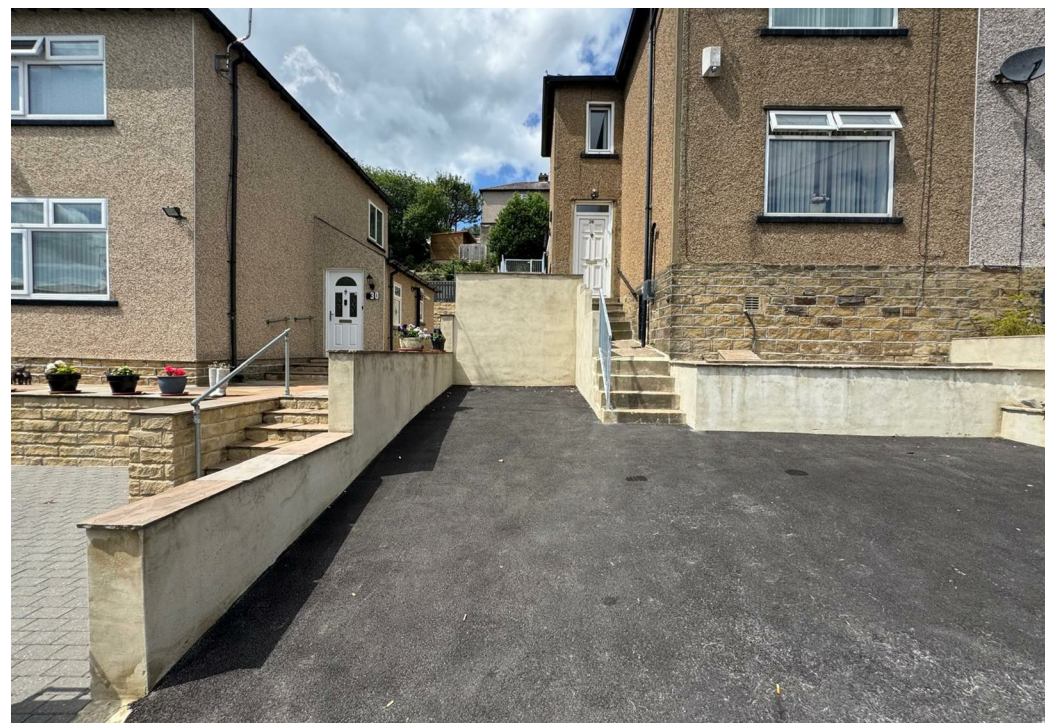
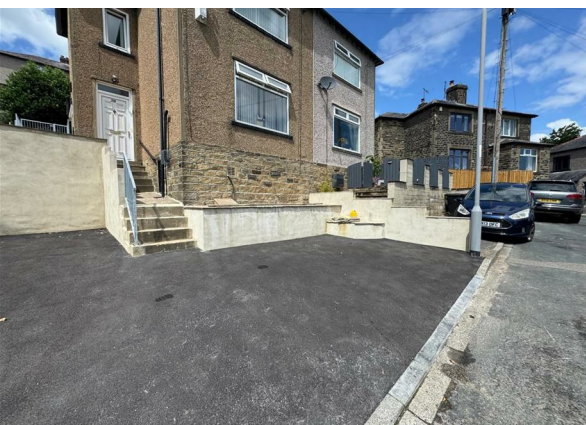


Exley Crescent, Keighley, BD21 1NE

Asking Price £185,000

Council Tax Band: B



Nestled in the charming area of Exley Crescent, Keighley, this delightful semi-detached house offers a perfect blend of comfort and convenience. With three well-proportioned bedrooms, this property is ideal for families or those seeking extra space. The inviting reception room provides a warm and welcoming atmosphere, perfect for relaxing or entertaining guests.

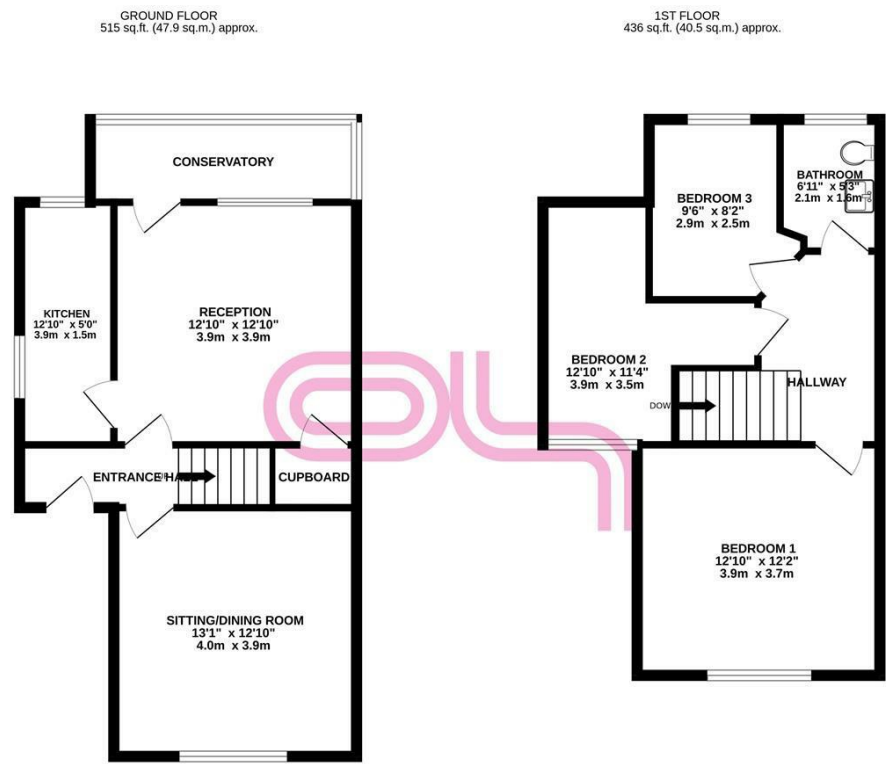
The house features a well-appointed bathroom, ensuring that all your daily needs are met with ease. The layout of the property is practical, allowing for a seamless flow between rooms, making it a wonderful place to call home.

Exley Crescent is situated in a friendly neighbourhood, offering a sense of community while still being close to local amenities. Residents can enjoy easy access to shops, schools, and parks, making it an excellent choice for families and individuals alike.

This semi-detached house presents a fantastic opportunity for anyone looking to settle in Keighley. With its appealing features and prime location, it is sure to attract interest. Do not miss the chance to view this lovely property and envision your future in this welcoming home.



Keighley



TOTAL FLOOR AREA : 951 sq.ft. (88.4 sq.m.) approx.
Whilst every attempt has been made to ensure the accuracy of the floorplan contained here, measurements of doors, windows, rooms and any other items are approximate and no responsibility is taken for any error, omission or mis-statement. This plan is for illustrative purposes only and should be used as such by any prospective purchaser. The services, systems and appliances shown have not been tested and no guarantee as to their operability or efficiency can be given.
Made with Metropix 02020



Energy Efficiency Rating		Current	Potential
Very energy efficient - lower running costs			
(92 plus) A		58	83
(81-91) B			
(69-80) C			
(55-68) D			
(39-54) E			
(21-38) F			
(1-20) G			
Not energy efficient - higher running costs			
England & Wales		EU Directive 2002/91/EC	