



THOMAS HOWE
PROPERTY POWERED BY exp UK

📞 0208 914 7896

📠 07761 514 760

✉️ thomas@thomashoweproperty.co.uk

🌐 www.thomashoweproperty.co.uk

Westbury Road, Penge, SE20

Guide Price £700,000

🛏️ 4 🪑 2 🚗 3



Please Quote Ref TH0310 For All Enquiries - Well presented four bedroom terraced house (1,165 Sq.Ft) with low maintenance all-weather surface garden, ideally located in a popular location on the borders of Penge and Beckenham, close to fantastic transport links, schools and amenities. Offering bright and spacious accommodation extended over three floors, with modern interiors and neutral finish throughout, the property provides the ideal blend of comfort and convenience for a modern lifestyle. Features include a light and airy front aspect reception room, full width well equipped open plan kitchen/diner, two bath/shower rooms (one en-suite), gas central heating, double glazing, ample inbuilt storage and quality floor coverings.

Accommodation comprises entrance hall with stairs rising to the first floor and access to understairs storage, leading into the front aspect reception room with attractive bay window and feature fireplace. To the rear of the property, the open plan kitchen/diner provides wonderful family space as well as direct access onto the private garden. The kitchen area comprises a modern range of matching wall and base units with work surfaces incorporating inset ceramic sink unit and further space for appliances. To the first floor, there are three well proportioned bedrooms - two doubles and a single/study - plus a family bathroom with modern bath suite and separate walk-in shower unit. The second floor has been usefully converted to create a large principal bedroom with en-suite shower and access to remaining eaves storage space.

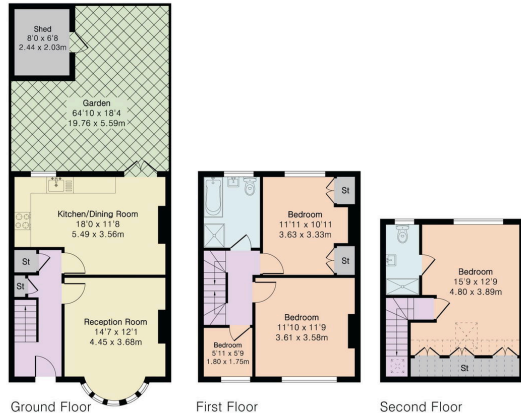
The property is very conveniently located within a short walk of Kent House and Clock House stations, as well as Tramlink from Beckenham Road connecting the centres of Wimbledon and Croydon. Numerous regular bus routes also link the surrounding area. Penge, Beckenham and Crystal Palace are all close-by offering an excellent variety of shops, bars, restaurants and amenities and the area is well served by excellent schools and open spaces including historic Crystal Palace Park.

Viewings are highly recommended.

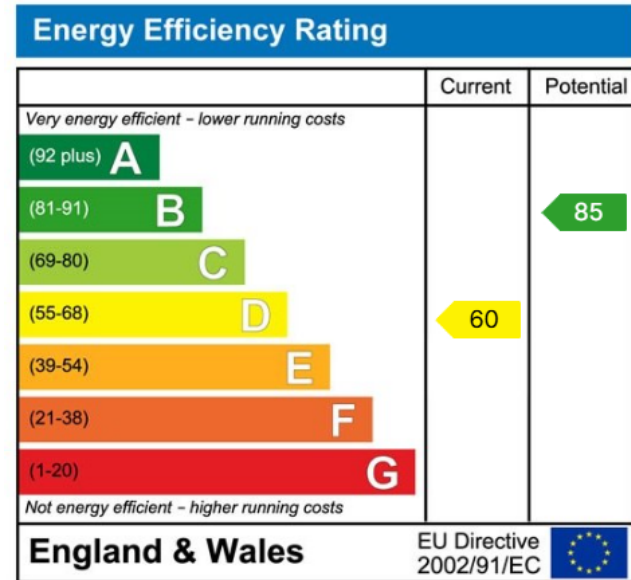


Approximate Gross Internal Area 1165 sq ft - 108 sq m
(Excluding Outbuilding)

Ground Floor Area 446 sq ft - 41 sq m
First Floor Area 430 sq ft - 40 sq m
Second Floor Area 289 sq ft - 27 sq m
Outbuilding Area 53 sq ft - 5 sq m



- Please Quote Ref TH0310 For All Enquiries
- Beckenham/Penge Borders
- Bright and Spacious Reception Room
- Two Bath/Shower Rooms (One En-Suite)
- Close to Excellent Transport Links
- Well Presented Four Bedroom Terraced House (1,165 Sq.Ft)
- Extended Over Three Floors, with Modern Interiors
- Full Width Well Equipped Eat-In Kitchen/Diner
- Delightful Low Maintenance Garden with Shed
- Easy Access Shops, Schools and Amenities



THOMAS HOWE Property Powered by eXp is an approved agent of eXp World UK Limited, trading as eXp UK, E14 5HU. Registered at 5 Churchill Place, 10th Floor, London, United Kingdom. Company number 12016573. VAT no 327 4120 29.

If you have instructed another agent to sell your house and instruct eXp World Ltd to sell your property at the same time, then you could be liable to pay both agents. It is recommended that you check the contract you have with your current agent.