



Foredraft Close, Birmingham B32 3TP

welcome to

Foredraft Close, Birmingham

*** MID - TERRACED *** THREE - BEDROOMS *** LOUNGE *** KITCHEN/DINER *** DRIVEWAY *** REAR GARDEN *** DOWNSTAIRS W/C *** PERFECT HOME FOR FAMILIES ***

Agent Note

This property is council tax band B.
The property has solar panels.

Entrance Porch

Double glazed window, front door leads into entrance hallway.

Entrance Hallway

Stairs to first floor, doors to w/c, lounge & kitchen/dining room.

W/C

Low level flush w/c, wash hand basin.

Lounge

15' 3" x 9' 10" (4.65m x 3.00m)
Double glazed window to front, ceiling light connection, central heating radiator, carpet.

Kitchen/Dining Room

16' 9" x 16' 2" (5.11m x 4.93m)
Double glazed window to rear & door to rear garden, ceiling light connection, central heating radiator, tiled floor & tiles to splash-prone areas, breakfast bar, integrated oven & hob, sink & drainer with mixer tap, wine fridge, space for fridge freezer, range of wall & base units with worktops over. Carpet to dining are, space for dining table, built in cupboard.

Landing

Doors to three bedrooms and family bathroom.

Bedroom 1

12' 10" x 9' 10" (3.91m x 3.00m)
Double glazed window to front, built in storage/wardrobe, carpet, central heating radiator, ceiling light connection.

Bedroom 2

Double glazed window to rear, carpet, central heating radiator, ceiling light connection.

Bedroom 3

9' 10" x 6' 7" (3.00m x 2.01m)
Double glazed window to rear, built in storage/wardrobe, carpet, central heating radiator, ceiling light connection.

Bathroom

8' 10" x 6' 3" (2.69m x 1.91m)
Double glazed frosted window to front, carpet, central heating radiator, ceiling light connection, bath with shower over and hot & cold taps, wash hand basin with hot & cold taps and small mirror above, low level flush w/c, wall mounted cabinet.

Front Garden

Fully block paved driveway, fencing on both sides, small step up to porch.

Rear Garden

Fully slabbed, fencing surrounds for privacy, gate at rear of garden, 2 small steps up to further slabbed area, brick built storage shed.

Parking

Driveway.





check out more properties at shipways.co.uk



welcome to

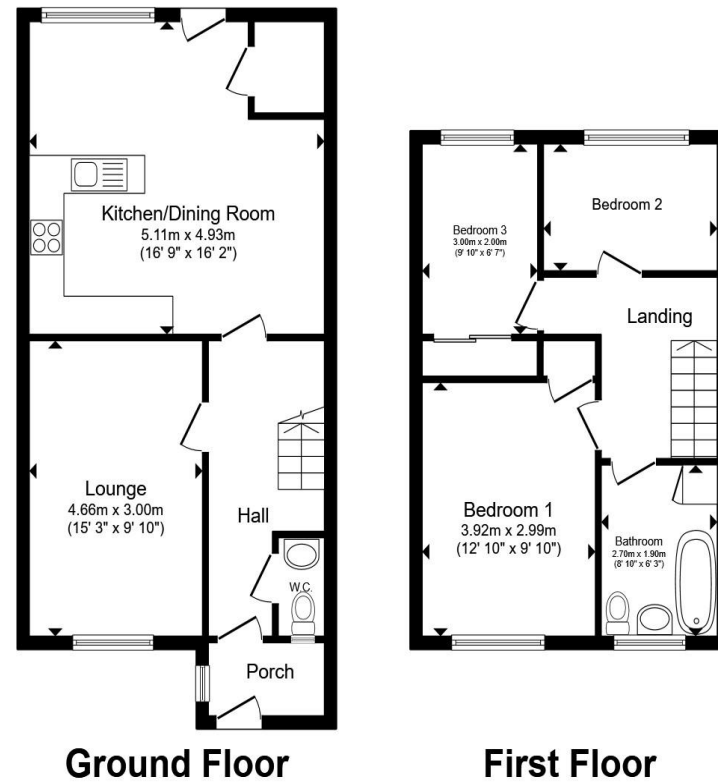
Foredraft Close, Birmingham

- MID-TERRACED
- THREE BEDROOMS
- LOUNGE
- KITCHEN/DINING ROOM
- DOWNSTAIRS W/C

Tenure: Freehold EPC Rating: B
Council Tax Band: B

offers in excess of

£230,000



Total floor area 91.7 m² (987 sq.ft.) approx

This floor plan is for illustrative purposes only. It is not drawn to scale. Any measurements, floor areas (including any total floor area), openings and orientation are approximate. No details are guaranteed, they cannot be relied upon for any purpose and they do not form part of any agreement. No liability is taken for any error, omission or misstatement. A party must rely upon its own inspection(s). Powered by www.propertybox.io



check out more properties at shipways.co.uk



Property Ref:
HBN112307 - 0002

1. MONEY LAUNDERING REGULATIONS Intending purchasers will be asked to produce identification documentation at a later stage and we would ask for your co-operation in order that there is no delay in agreeing the sale. 2. These particulars do not constitute part or all of an offer or contract. 3. The measurements indicated are supplied for guidance only and as such must be considered incorrect. Potential buyers are advised to recheck measurements before committing to any expense. 4. We have not tested any apparatus, equipment, fixtures or services and it is in the buyers interest to check the working condition of any appliances. 5. Where an EPC, or a Home Report (Scotland only) is held for this property, it is available for inspection at the branch by appointment. If you require a printed version of a Home Report, you will need to pay a reasonable production charge reflecting printing and other costs. 6. We are not able to offer an opinion either written or verbal on the content of these reports and this must be obtained from your legal representative. 7. Whilst we take care in preparing these reports, a buyer should ensure that his/her legal representative confirms as soon as possible all matters relating to title including the extent and boundaries of the property and other important matters before exchange of contracts.

Shipways is a trading name of Sequence (UK) Limited which is registered in England and Wales under company number 4268443, Registered Office is Cumbria House, 16-20 Hockliffe Street, Leighton Buzzard, Bedfordshire, LU7 1GN. VAT Registration Number is 500 2481 05.

Not for marketing purposes INTERNAL USE ONLY



0121 427 3264



harborne@shipways.co.uk



172 High Street, Harborne, BIRMINGHAM,
West Midlands, B17 9PP



shipways.co.uk