



## Rutland Gardens, W13

### £1,350,000

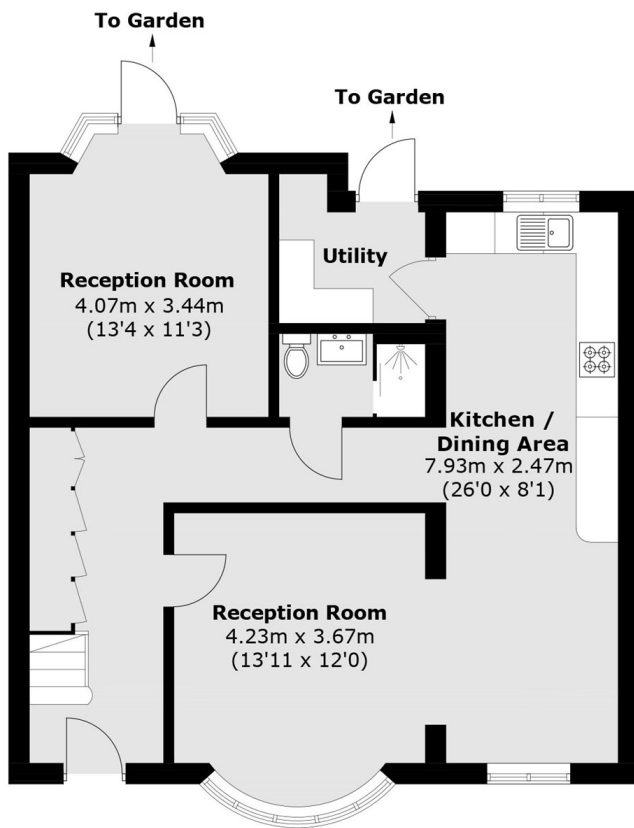
A wonderful family home with four bedrooms, three bathrooms and two reception rooms in its current configuration. There is both an en-suite and walk in wardrobe to the principle bedroom. The property has been double storey extended to the side with off street parking to the front and side access to the rear garden. Many neighbouring properties have further extended into the loft space also.

Located just 0.7 miles from West Ealing Elizabeth line station with Canary Wharf in as little as thirty minutes and Bond Street in approximately fourteen. There are excellent local schools, state and private, close by as well as Pitshanger and Cleveland Parks.

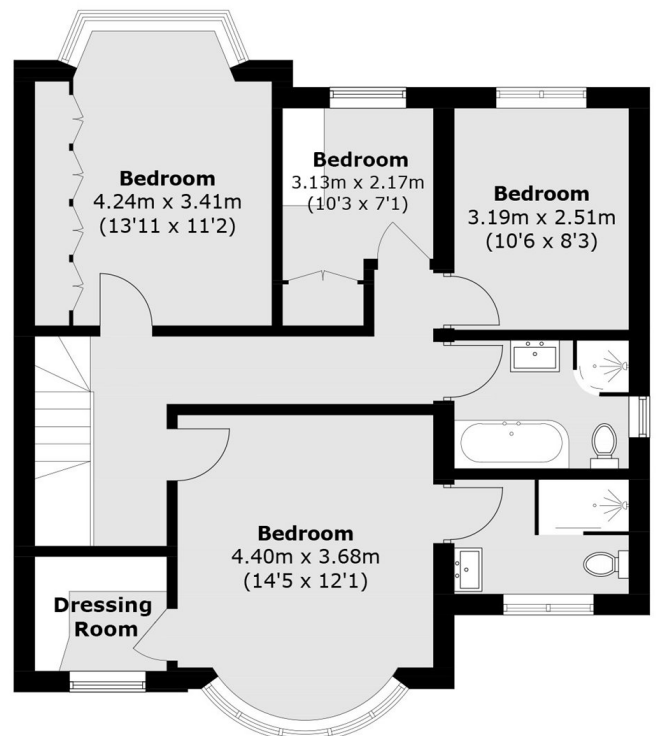
### Features

- Four Bedrooms
- Three Bathrooms
- Two Reception Rooms
- Off Street Parking
- No Onward Chain
- Excellent Local Schools

# Rutland Gardens, London, W13



**Ground Floor**



**First Floor**

Total area (approx.): 142.1 sq. m (1,529.5 sq. ft)