



East Hill, SW18

£750,000

Located on the second floor, this apartment comes with a spacious kitchen living space, two large bedrooms, two bathrooms, plenty of storage, and a private balcony. The property comes with a balcony spacious enough for outdoor furniture. Complimented with Siemens appliances and integrated smart home controls for hot water and central heating.

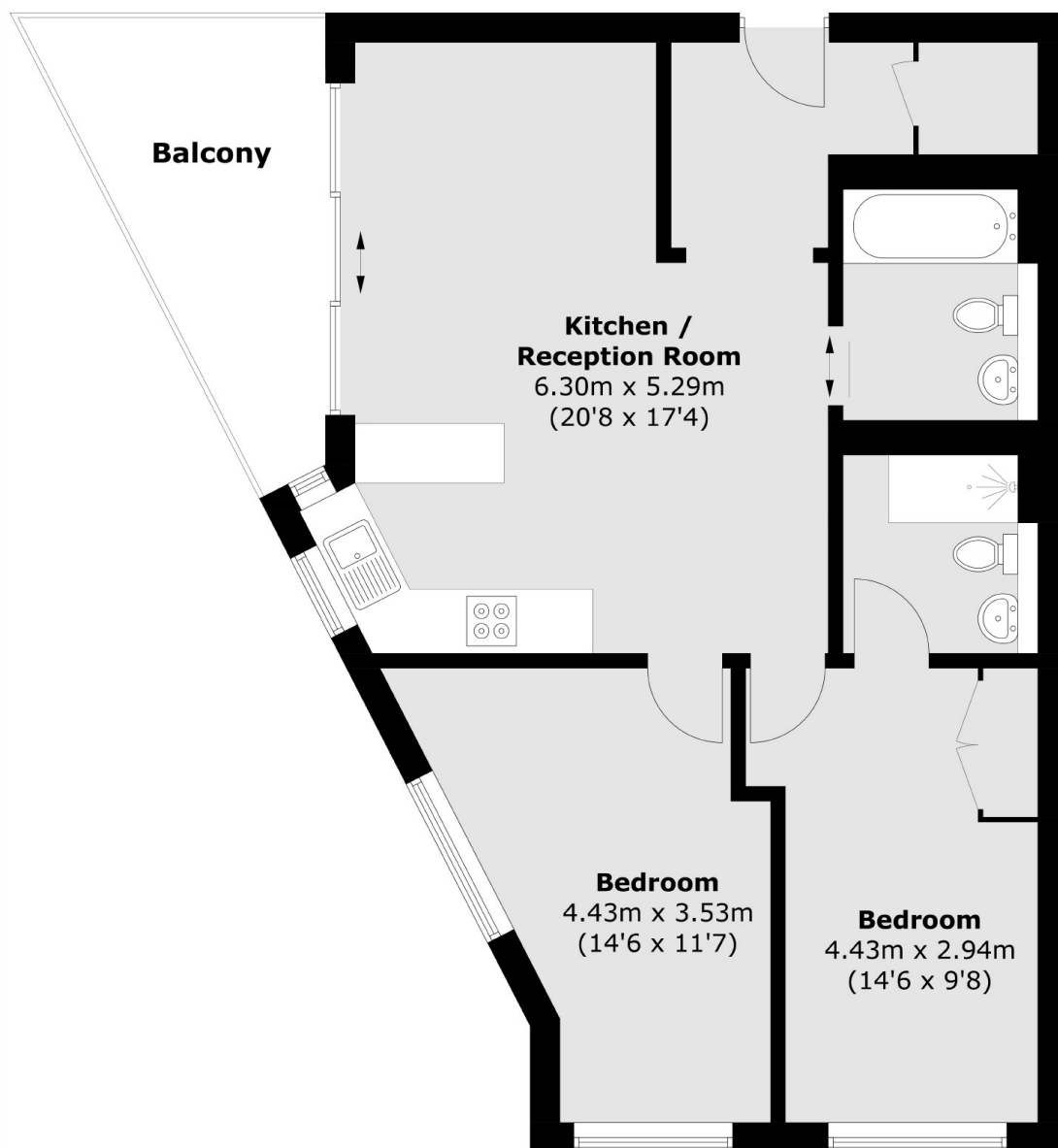
**** Please note, some additional photographs from the show home within the same development have been used ****

The shops and amenities of St John's Road and Northcote Road as well as Clapham Junction station are all less than ½ mile away, whilst Wandsworth Common is just a few steps from the front door.

Features

- Private Balcony
- Two Bedrooms
- Two Bathrooms
- Secure Bicycle Storage
- Communal Roof Top Garden
- Eco-Friendly Development

East Hill, Wandsworth, SW18



Total area (approx.): 69.5 sq. m (748.0 sq. ft)
Balcony : 9.6 sq. m (103 sq. ft)

Dexters

Northcote Road
93 St. John's Road
London
SW11 1QY
Sales
020 7483 6333

Energy Rating: . We aim to make our particulars both accurate and reliable. However they are not guaranteed; nor do they form part of an offer or contract. If you require clarification on any points then please contact us, especially if you're traveling some distance to view. Please note that appliances and heating systems have not been tested and therefore no warranties can be given as to their good working order.

 **RICS** | Regulated
Estate Agent
and Letting Agent

dexters.co.uk