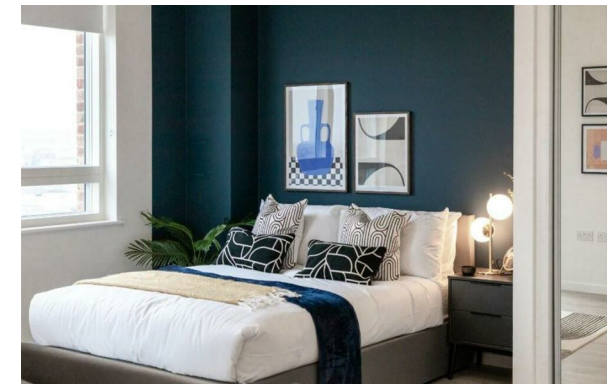
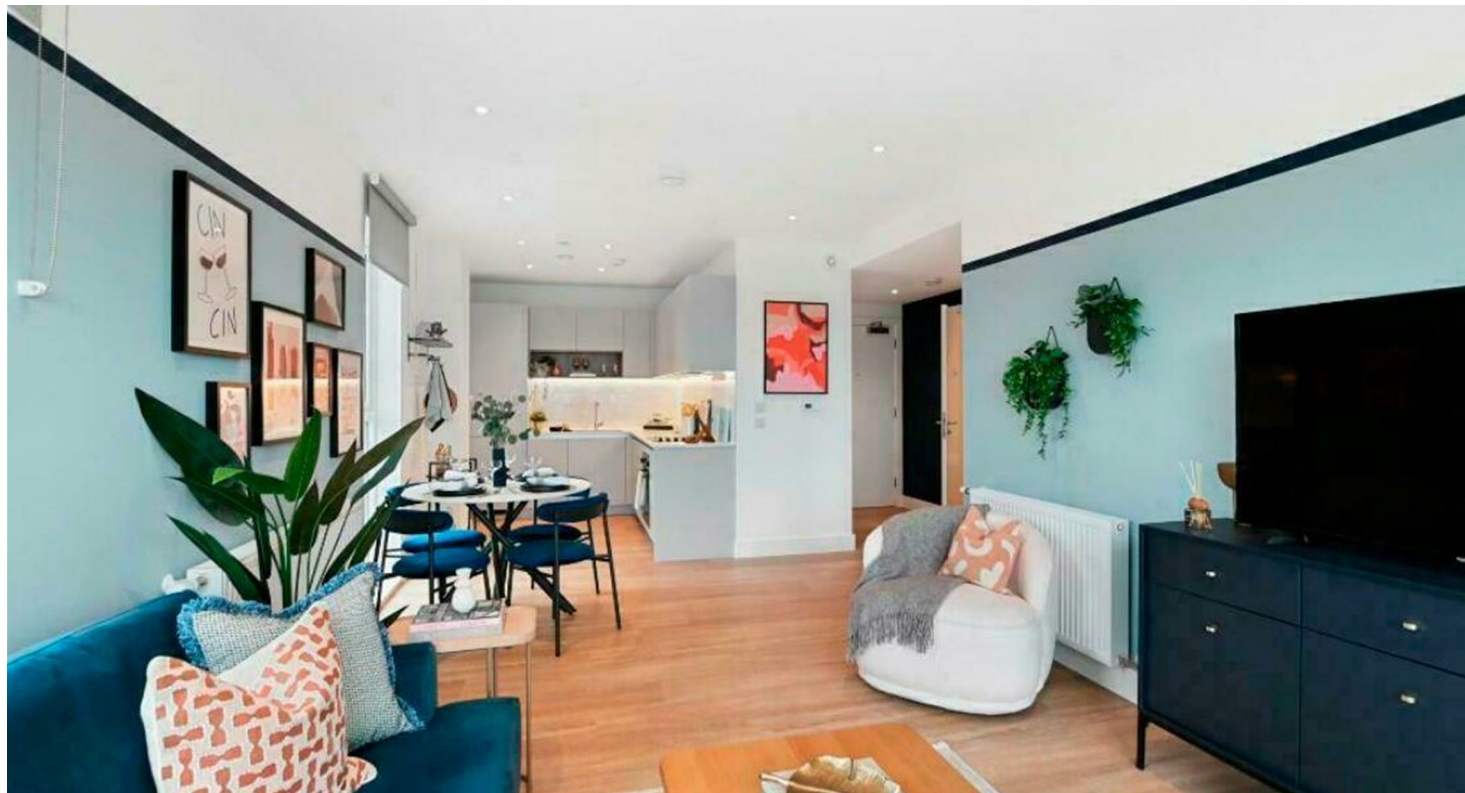




RESIDENTIAL



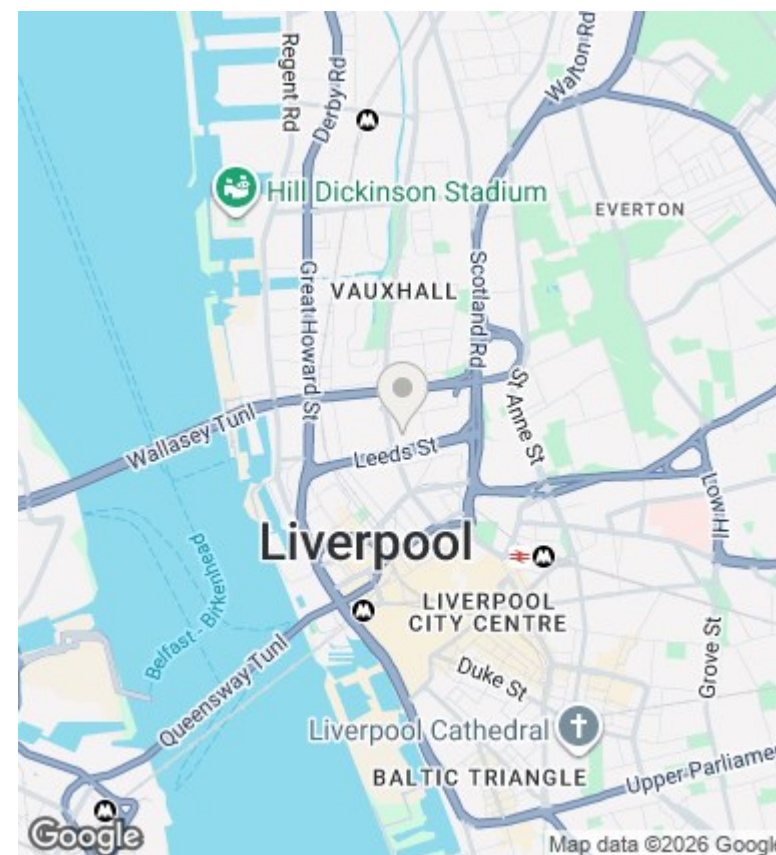
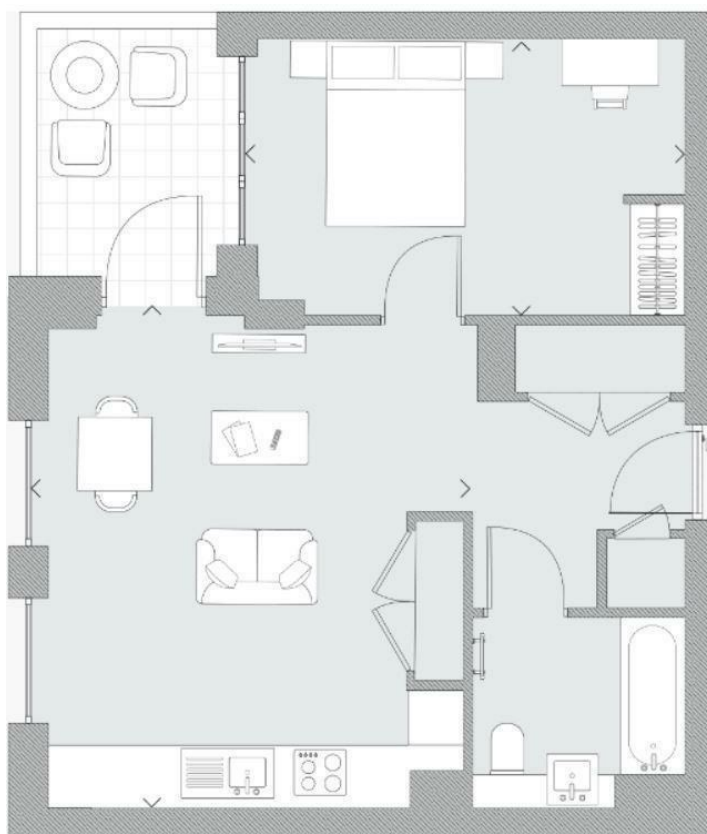
12b, Naylor Street, Liverpool, L3 6DL

£144,950

- New Build
- Central Location
- Short Term Let Approved with yields up to 15%
- Furniture Pack Included
- AST Yields up to 7%
- Reputable Developer

Unit 1 Feast Field, Horsforth, Leeds, LS18 4TJ
0113 3224 345

info@tkiproperty.co.uk
www.tkiproperty.co.uk



Directions

Viewings

Viewings by arrangement only. Call 0113 3224 345 to make an appointment.

Council Tax Band

EPC Rating:

Energy Efficiency Rating		
	Current	Potential
Very energy efficient - lower running costs		
(92 plus) A		
(81-91) B		
(69-80) C		
(55-68) D		
(39-54) E		
(21-38) F		
(1-20) G		
Not energy efficient - higher running costs		
England & Wales	EU Directive 2002/91/EC	