



Hodshrove Road, Brighton, BN2 4RW

£260,000

Property Type: Semi Detached House

Bedrooms: 2

Bathrooms: 1

Receptions: 1

Tenure: Freehold

- No Onward Chain
- Separate Study
- Separate Kitchen and Spacious Living Area
- Large Private Rear Garden
- Potential to Update and Add Value
- Excellent Investment or First-Time Buy
- Close to Local Amenities and Transport Links
- Side Access
- New Boiler
- VACANT

Ideal First-Time Buy or Investment – 2-Bedroom Semi-Detached Home with Large Garden in Brighton





Situated on the well-connected Hodshrove Road in Brighton, this charming 2-bedroom semi-detached house offers an excellent opportunity for first-time buyers and investors alike.

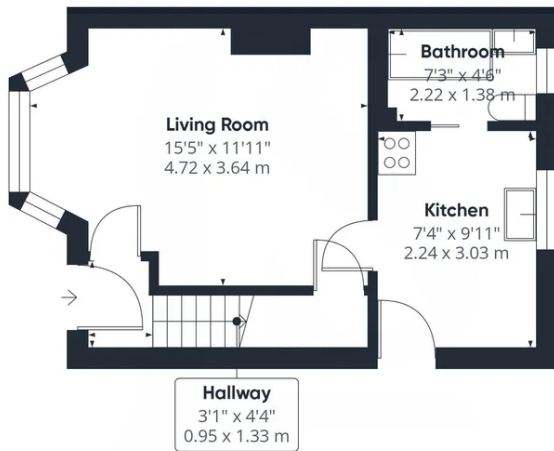
The property features a separate kitchen, a bright and welcoming living area, and two well-proportioned bedrooms. The layout provides great potential for personalisation or modernisation to suit your needs and style.

A standout feature of this home is the generously sized rear garden—perfect for gardening enthusiasts and entertaining. With plenty of outdoor space, it offers a rare opportunity for versatile living in a popular urban setting.

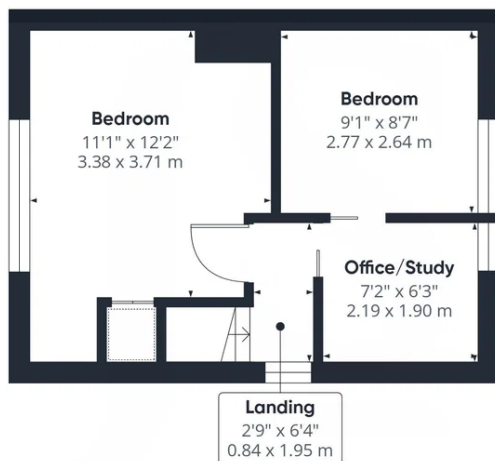
Located close to local shops, schools, bus routes, and with easy access to both Brighton city Centre and the A27, this home combines convenience with great long-term value.

Don't miss this great chance to secure a solid property in a popular location with plenty of scope for the future.





Ground Floor



Floor 1



Approximate total area⁽¹⁾

585 ft²

54.3 m²

(1) Excluding balconies and terraces

Calculations reference the RICS IPMS 3C standard. Measurements are approximate and not to scale. This floor plan is intended for illustration only.

GIRAFFE360



Whilst we endeavour to make our properties particulars accurate and reliable, we have not carried out a detailed survey. If there is any point which is of particular importance to you, please contact the office and we will be pleased to check the information for you, particularly if you are contemplating travelling some distance. Whilst every effort has been made to ensure that any floorplans are correct and drawn as accurately as possible, they are to be used for layout and identification purposes only and are not drawn to scale. The services, where applicable, including electrical equipment and other appliances have not been tested and no warranty can be given that they are in working order, even where described in these particulars. Carpets, curtains, furnishing, gas fires, electrical goods/ fittings or other fixtures, unless expressly mentioned, are not necessarily included with the property.