



17a Lucas Road

London, SE20 7EE

Offers In Excess Of £300,000

Nestled in the charming area of Penge, London, this delightful first-floor Victorian flat on Lucas Road offers a wonderful opportunity for first-time buyers seeking a property with great potential. Built in 1930, the flat retains a sense of character while providing a blank canvas for those eager to add their personal touch.

The accommodation comprises two well-proportioned bedrooms, perfect for restful nights, alongside a comfortable reception room that invites relaxation and social gatherings. The flat also features a conveniently located bathroom, ensuring all essential amenities are within easy reach.

One of the standout features of this property is the direct access to a split communal garden, providing a serene outdoor space to unwind or entertain friends and family. The flat is situated on a quiet residential no-through road, enhancing the peaceful atmosphere while still being within walking distance to Penge East Station, making commuting a breeze.

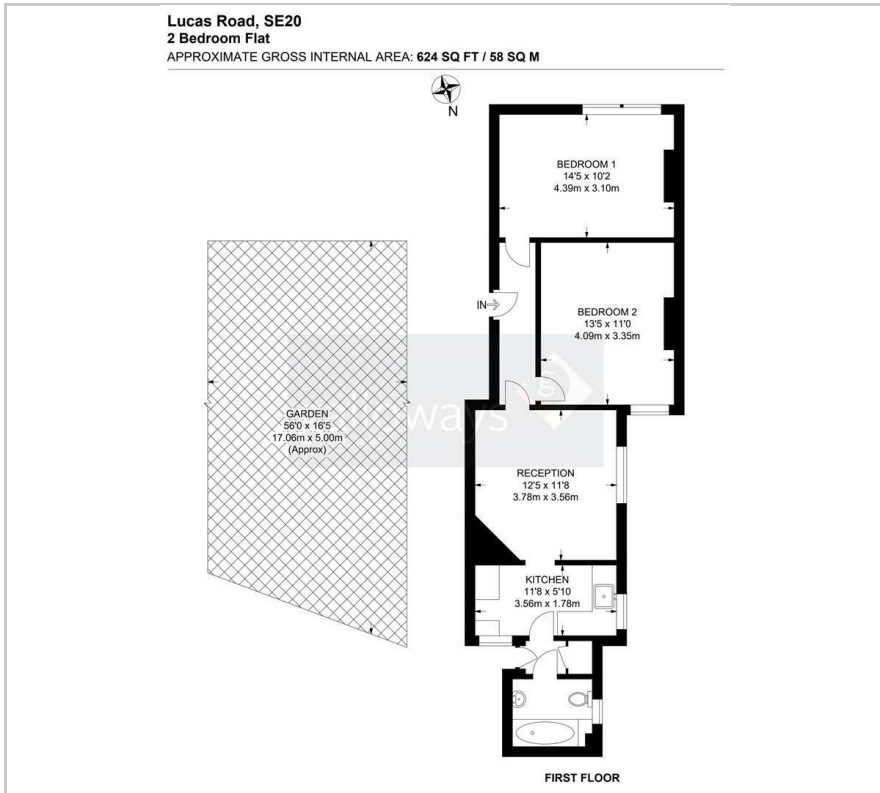
This property is sold chain-free, allowing for a smooth and straightforward purchase process. With its prime location and potential for personalisation, this flat is an excellent choice for those looking to step onto the property ladder in a vibrant and welcoming community. Don't miss the chance to make this charming flat your new home.

Viewing

Please contact our Galloways Penge Office on 020 8778 1120 if you wish to arrange a viewing appointment for this property or require further information.

- TWO BEDROOM FLAT
- FIRST FLOOR
- SOLD CHAIN FREE
- VICTORIAN PERIOD
- COMMUNAL GARDEN
- SEPARATE KITCHEN
- 2 MINUTE WALK TO PENGE EAST STATION
- 11 MINUTE WALK TO PENGE WEST STATION
- 4 MINUTE WALK TO PENGE HIGH STREET
- (ALL WALKING TIMES ARE ESTIMATED VIA GOOGLE MAPS)

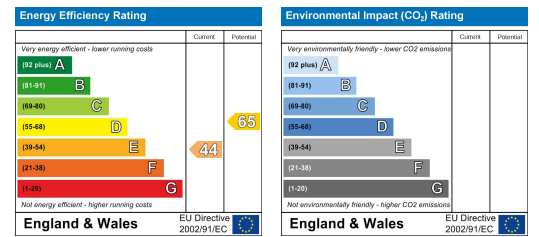
Floor Plan



Area Map



Energy Efficiency Graph



These particulars, whilst believed to be accurate are set out as a general outline only for guidance and do not constitute any part of an offer or contract. Intending purchasers should not rely on them as statements of representation of fact, but must satisfy themselves by inspection or otherwise as to their accuracy. No person in this firm's employment has the authority to make or give any representation or warranty in respect of the property.