



HARRISON
Sales &
Lettings
HARDY

Wheat Close, Broadwell



We're pleased to bring to the market, this three bedroom end of terrace property, situated in a sought after village location, presenting an excellent opportunity for first buyers or those wishing to downsize.

The property features a spacious dual aspect living room with log burner, allowing natural light to flood the space and create a welcoming atmosphere, with a separate dining room providing an ideal multifunctional space. The ground floor also benefits from a convenient downstairs WC. Upstairs, three well proportioned bedrooms offer comfortable accommodation.

The property includes a private driveway, providing off street parking for added convenience. This home combines generous living spaces with the potential to update and add value, making it an appealing prospect for buyers seeking a project in a desirable village setting.

With its flexible layout, this property is perfectly positioned for those wishing to create a home tailored to their own tastes and requirements. Early viewing is highly recommended to appreciate the potential on offer.

Tenure: We believe the property to be **Freehold**. Potential purchasers should obtain confirmation of this from their solicitor prior to exchange of contracts.

EPC: D

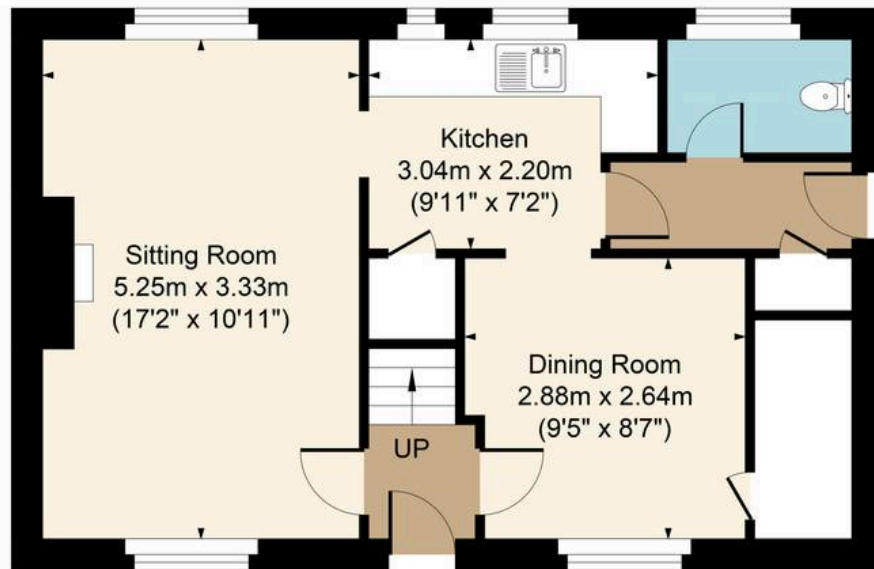
Council Tax Band: C

What3Words: [///strumming.guarded.january](#)

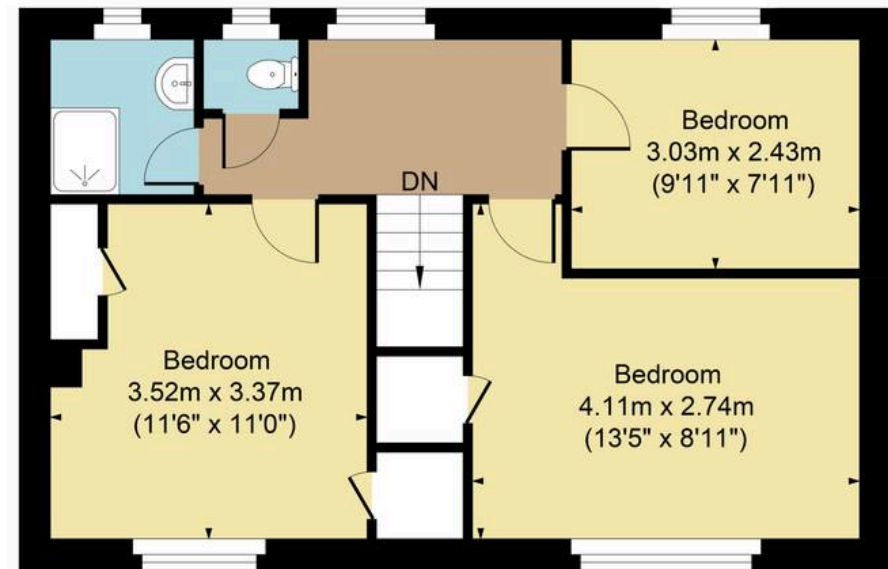




Main House Approx. Gross Internal Area:- 89.35 sq.m. 962 sq.ft.
Total Approx. Gross Area:- 89.35 sq.m. 962 sq.ft.



Ground Floor



First Floor

FOR ILLUSTRATIVE PURPOSES ONLY-NOT TO SCALE
The position & size of doors, windows, appliances and other features are approximate only.
□ □ □ Denotes restricted head height
www.dmlphotography.co.uk