



Salt Way, Fradley, Lichfield

£270,000

🛏️ 2 🚿 2 🚗 1

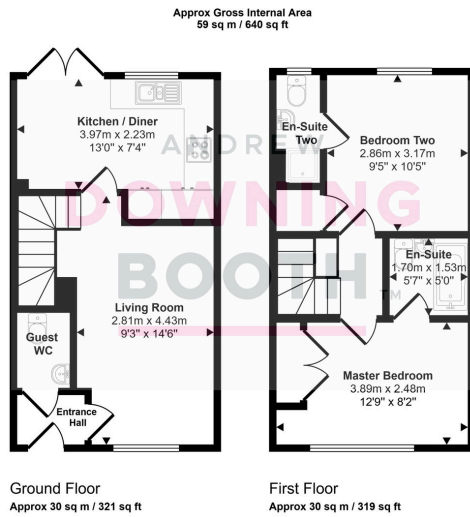


A simply immaculately presented two double bedroom home. This superb semi-detached property in Salt Way boasts generous room sizes, a prime location and an exacting standard of finish throughout.

Location-wise, Fradley is a rapidly flourishing area and is only becoming more and more sought after, with a wide range of amenities easily accessible, including gyms, eateries, scenic walks and the availability of a short drive to Lichfield and other surrounding areas via the A38, whilst neighbouring fields are plentiful, offering scenic walks along the Coventry Canal.

The accommodation is set across two floors, with an entrance hall, thoughtfully appointed living room, light and airy contemporary kitchen/diner and guest WC all to the ground floor, whilst the first floor is home to both spacious double bedrooms (each with their own stunning en-suite). A charming frontage features two allocated car parking spaces, whilst a private and predominantly lawned garden sits to the rear.





This floorplan is only for illustrative purposes and is not to scale. Measurements of rooms, doors, windows, and any items are approximate and no responsibility is taken for any error, omission or mis-statement. Icons of items such as bathroom suites are representations only and may not look like the real items. Made with Made Snappy 360.

- Two Double Bedroom Semi-Detached Property
- Built In 2018 & Finished To A Fantastic Standard Throughout
- Consistently Impressive Room Sizes
- Both Bedrooms Complete With Their Own Stunning En-Suite
- Desirable Location With Easy Access To Amenities
- Attractive Garden To The Rear Plus Parking For Two Cars
- EPC Rating: B
- Council Tax Band: C

