

SW19

it's all in the postcode...



Myrna Close

£500,000

- Two double bedrooms
- Garden
- Parking
- Freehold House
- Council tax Band D
- EPC Rating D



020 8544 2828

Wimbledon: Wimbledon Park: Colliers Wood

www.SW19.com

SW19 Estate Agents Ltd. Is registered in England & Wales No. 05508737

it's all in the postcode...

Lovely two double bedroom freehold house with allocated parking space located on a quiet cul de sac a short walk to Colliers Wood tube station. Comprising of a through lounge leading onto a private garden. This fantastic property for any buyers looking in the area and being sold with the benefit of no onward chain.

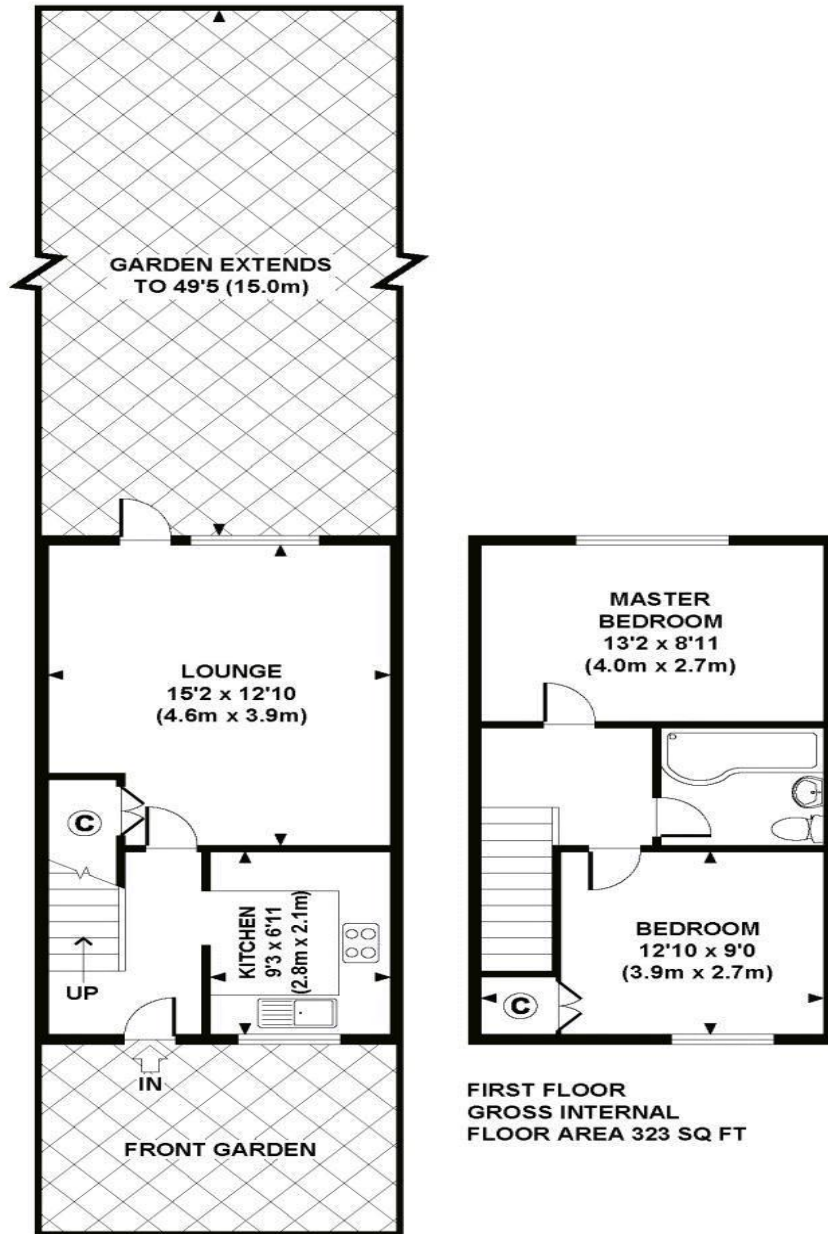
020 8544 2828

Wimbledon: Wimbledon Park: Colliers Wood

www.SW19.com

SW19 Estate Agents Ltd. Is registered in England & Wales No. 05508737

'it's all in the postcode...'



**GROUND FLOOR
GROSS INTERNAL
FLOOR AREA 323 SQ FT**

**FIRST FLOOR
GROSS INTERNAL
FLOOR AREA 323 SQ FT**



**APPROX. GROSS INTERNAL FLOOR AREA 646 SQ FT / 60 SQ M
Copyright SW19**

**Floorplans are for identification and guideline purposes only, not to scale.
Compliant with RICS code of measuring practice.**

These particulars are for guidance only and should not be relied upon as a statement or representation of fact. All measurements given are approximate only and should not be relied upon for ordering carpets, equipment etc. Purchasers should satisfy themselves by inspection or otherwise as to the accuracy of the statements contained within. Neither SW19 estate agents ltd or related companies or their employees can confirm structural conditions of the property or that any appliances or other facilities are in working order. Purchasers are strongly recommended to arrange their own survey.

020 8544 2828
Wimbledon: Wimbledon Park: Colliers Wood
www.SW19.com
SW19 Estate Agents Ltd. Is registered in England & Wales No. 05508737

'it's all in the postcode...'