



**11 Fifth Street, Portsmouth**  
Portsmouth

Offers in Region of **£230,000**





# Fifth Street

## Portsmouth

Situated in a thriving neighbourhood, this delightful two-bedroom home offers a bright and airy living space, perfect for modern living.

The ground floor features a spacious dining room, a cosy living area, and a contemporary kitchen with ample storage and workspace. The sleek kitchen design makes it ideal for cooking enthusiasts.

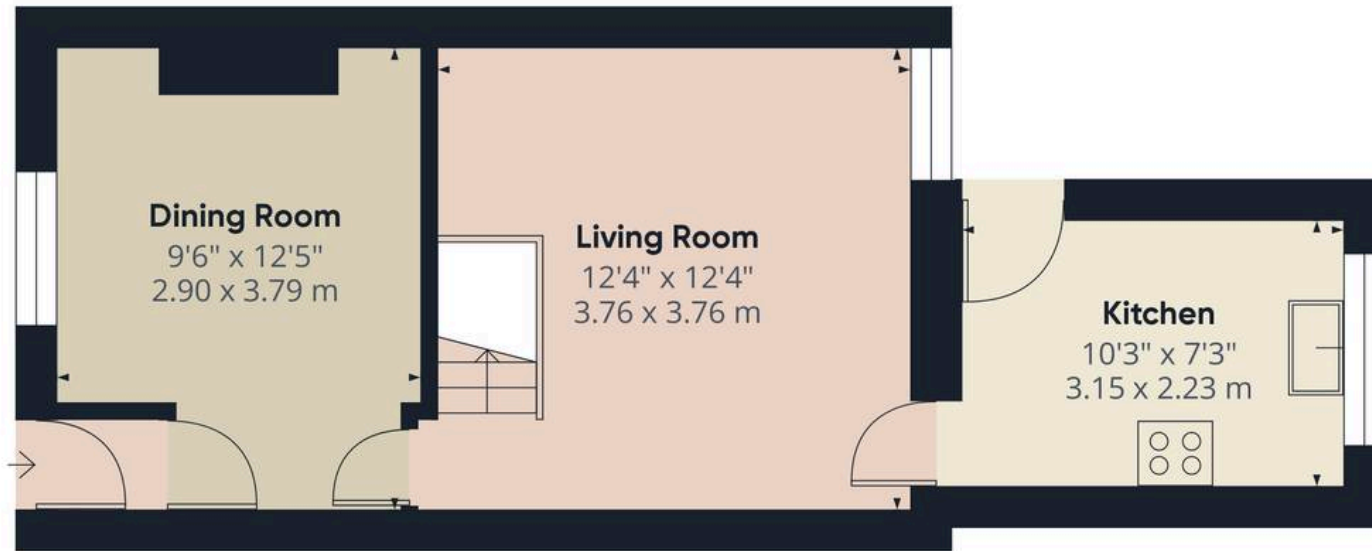
A generous rear garden provides a peaceful retreat for outdoor relaxation and entertaining. The property also benefits from a versatile shed, currently used as a home office, offering extra storage. There is also the option to rent a parking space opposite from the local council.

Upstairs, the main bedroom includes built-in storage, while the second bedroom offers a comfortable space for children, guests, or a home office. A stylish, recently renovated bathroom features a luxurious shower over the bath. With excellent transport links, schools, and local amenities nearby, this well-presented home is perfect for those seeking comfort, convenience, and a welcoming community.

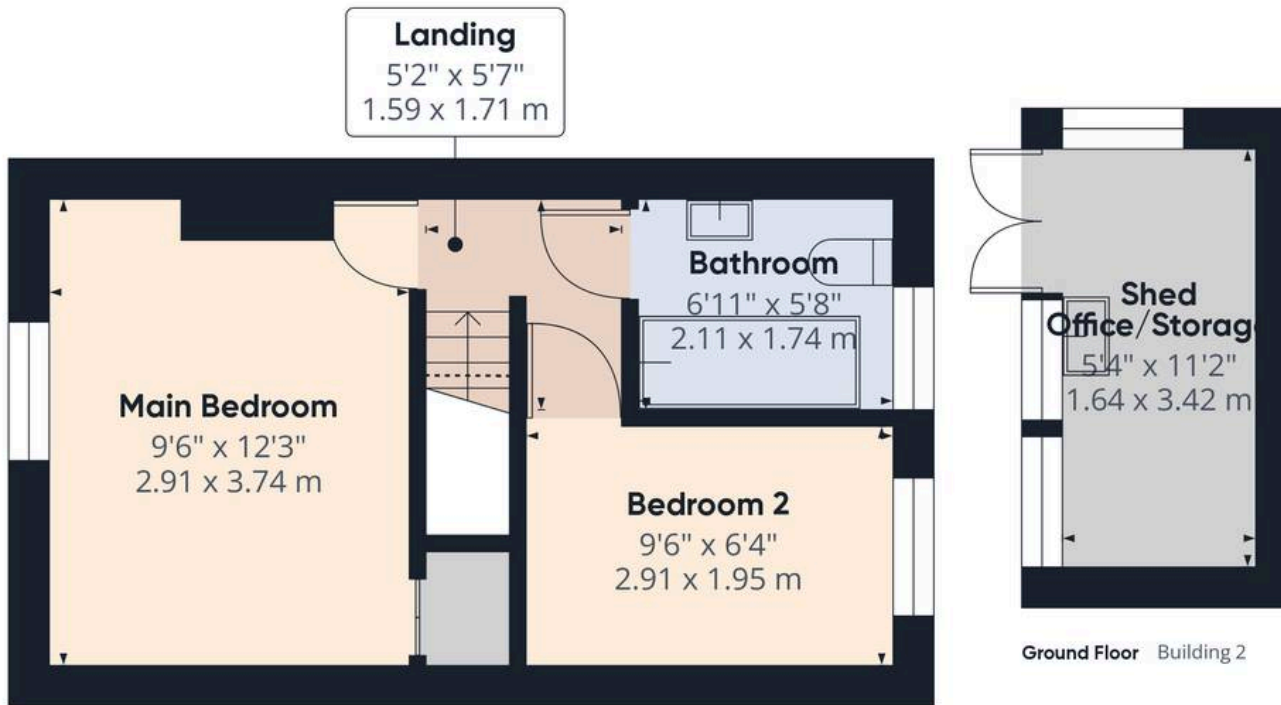
**Early viewing is highly recommended!**

**Material Information** • Tenure: Freehold • Council Tax: Band B • Electricity: Mains Supply • Heating: Electric • Water Supply: Mains supply • Sewage: Mains Supply • Broadband: Standard, Superfast and Ultrafast Fibre are all available in this area • Parking: On Street • Mobile: Ofcom official website checker states that EE, Vodafone, O2 and Three available in the area • Flood Risk: Low risk





Ground Floor Building 1



Floor 1 Building 1

**Approximate total area<sup>(1)</sup>**

647.12 ft<sup>2</sup>

60.12 m<sup>2</sup>

(1) Excluding balconies and terraces

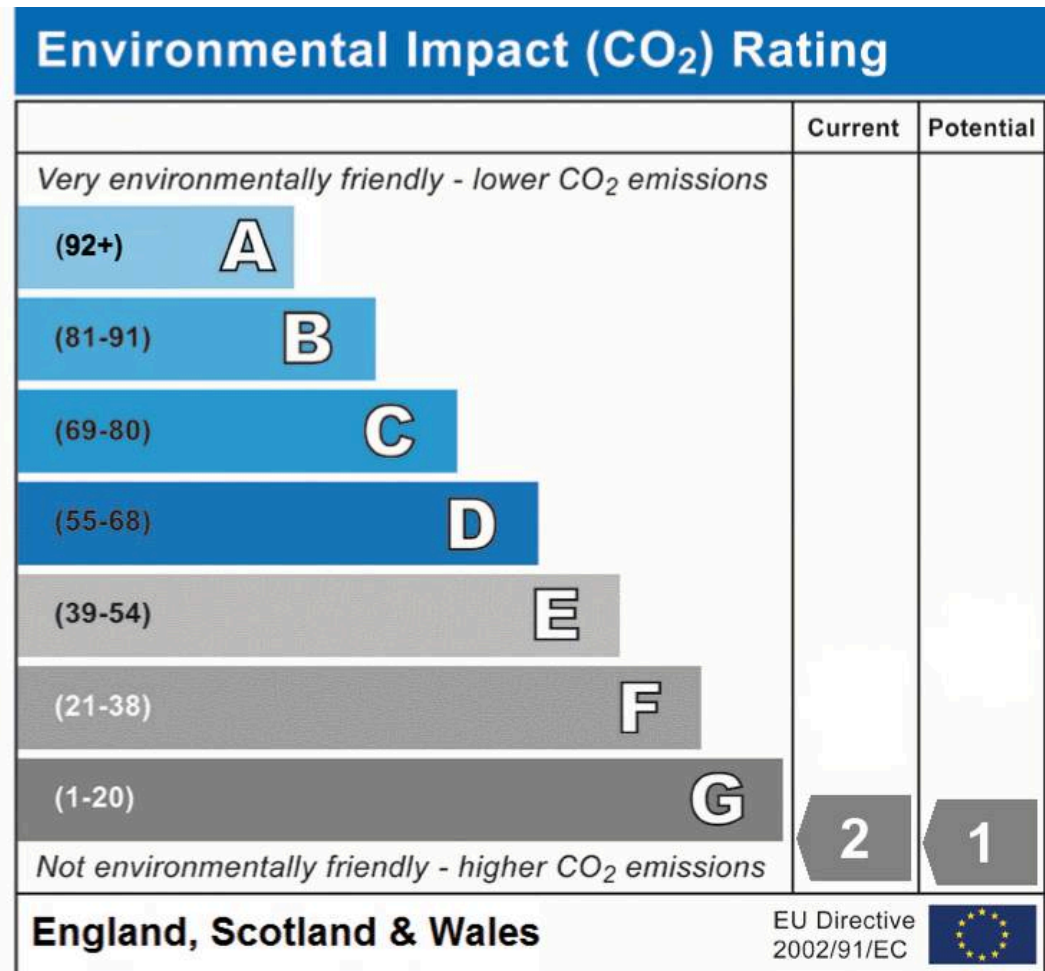
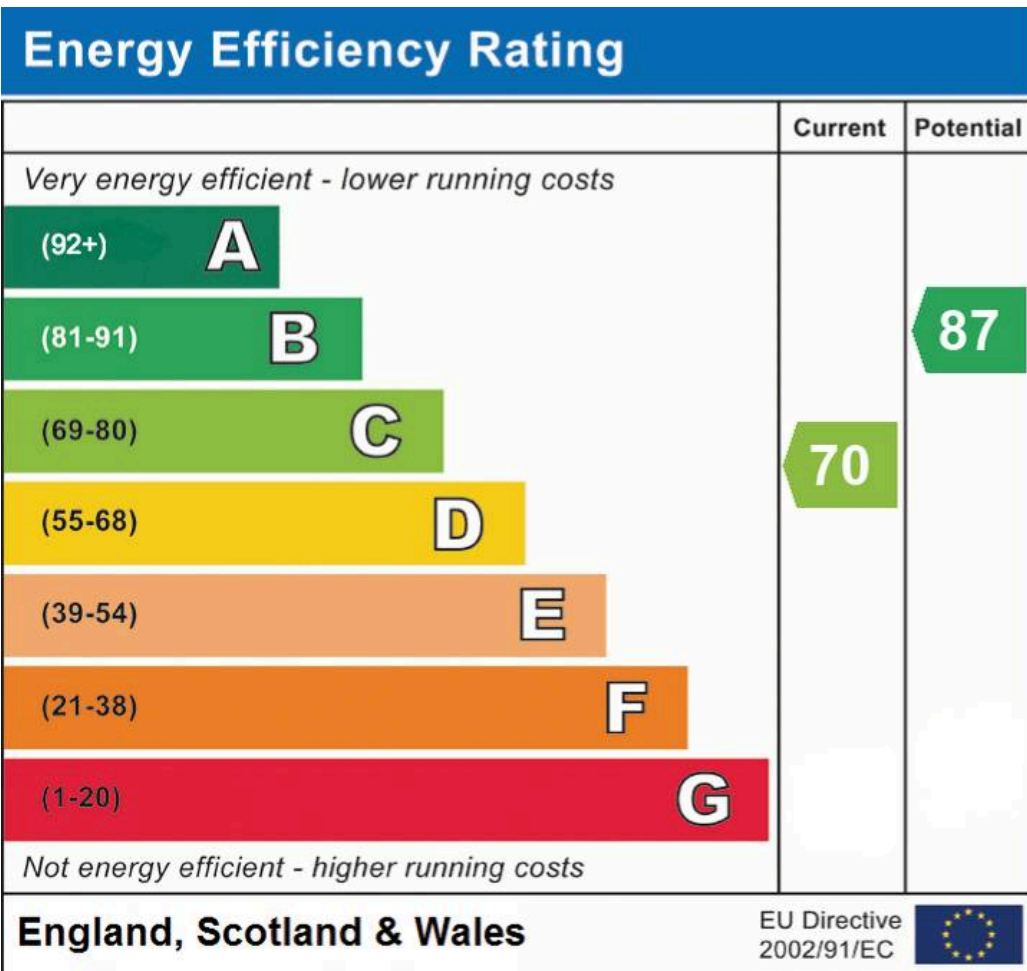
Reduced headroom

..... Below 5 ft/1.5 m

While every attempt has been made to ensure accuracy, all measurements are approximate, not to scale. This floor plan is for illustrative purposes only.

Calculations were based on RICS IPMS 3C standard. Please note that calculations were adjusted by a third party and therefore may not comply with RICS IPMS 3C.

**GIRAFFE 360**



## Chinneck Shaw

Bridge House, Milton Road, Portsmouth – PO3 6AN

023 9282 6731

hello@chinneckshaw.co.uk

www.chinneckshaw.co.uk/

Chinneck Shaw, Bridge House, Milton Road, PO3 6AN Consumer Protection from Unfair Trading Regulations 2008: These details are for guidance only and complete accuracy cannot be guaranteed. If there is any point which is of particular importance, verification should be obtained. They do not constitute a contract or part of a contract. All measurements are approximate. No guarantee can be given with regard to planning permissions or fitness for purpose. No apparatus, equipment, fixture or fitting has been tested. Items shown in the photographs are NOT necessarily included. Interested Parties are advised to check availability and make an appointment to view before travelling to see a property.