



Goldhawk Road, W12

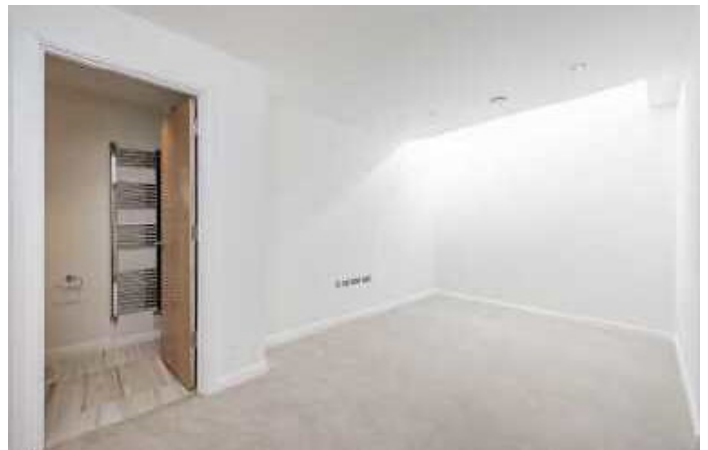
£773 Per week

This exceptionally presented, split level, three bedroom apartment is located within a premier new build development. The property benefits from a spacious open plan living room, three bathrooms and a fully integrated kitchen.

Goldleaf Apartments is well placed for access to the amenities of Goldhawk Road and transport links of Goldhawk Road station and Shepherds Bush Market.

Features

- Spacious Open Plan Reception
- Split Level
- New build
- Three Bathrooms
- Ample Storage
- Central Location



Goldhawk Road, W12

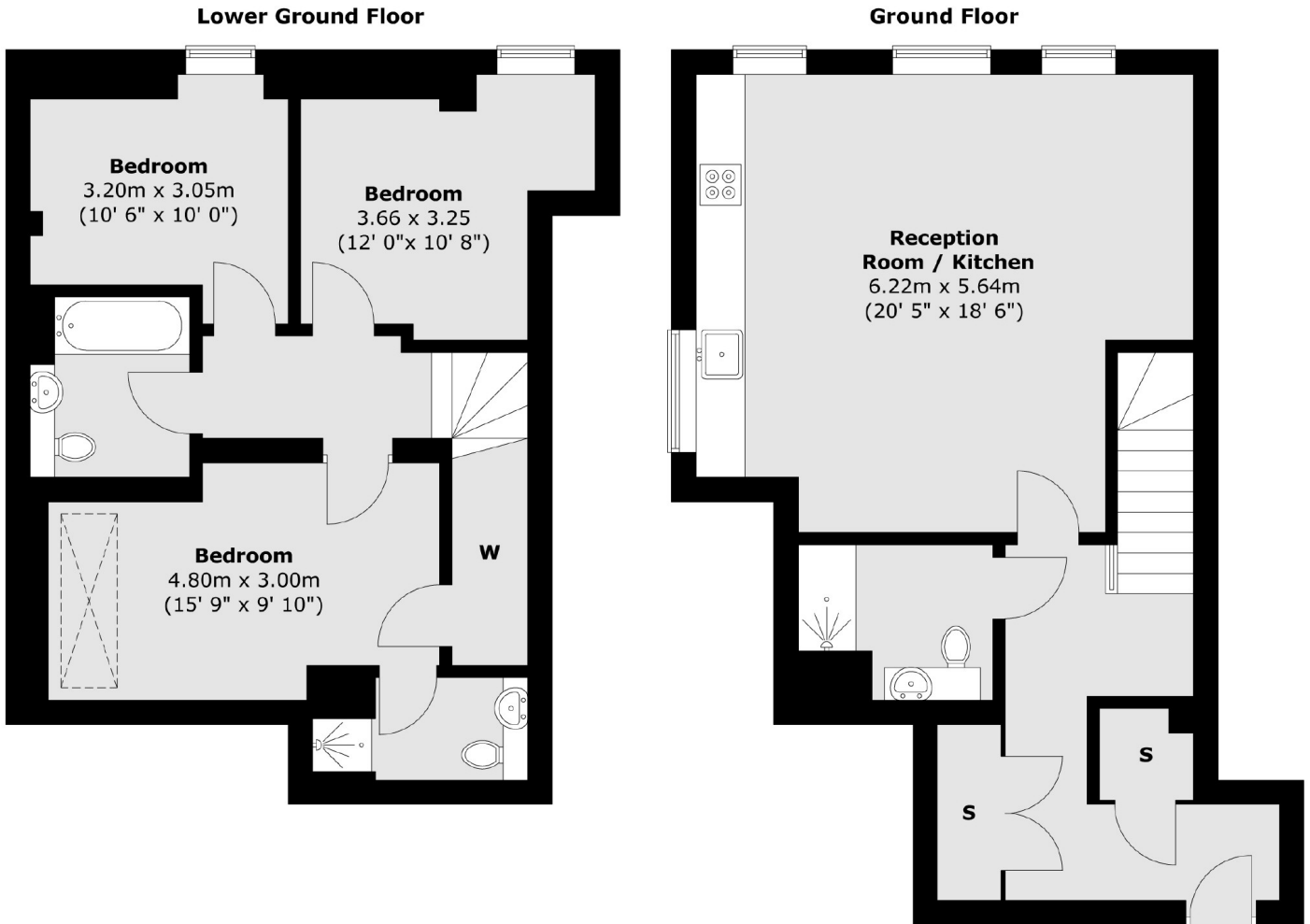
Situated in this remodelled and modernised building, this modern three bedroom apartment offers three bathrooms. The spacious and easy flowing accommodation comprises of an open plan reception room with a modern fitted kitchen and three double bedrooms.

The Goldleaf Apartments sits on the Goldhawk Road in cosmopolitan West London, a re-imagining of an existing building into ten contemporary duplex and lateral apartments.

Boasting high specification with stylish contemporary finishes these properties are also conveniently located in the heart of West London in one of London's most culturally vibrant neighbourhoods and within easy reach of Central London, Heathrow Airport and Underground stations.



Goldhawk Road, London, W12



Total area (approx.) : 105.6 sq. m (1137 sq. ft)