



OFFERS IN EXCESS OF

£335,000

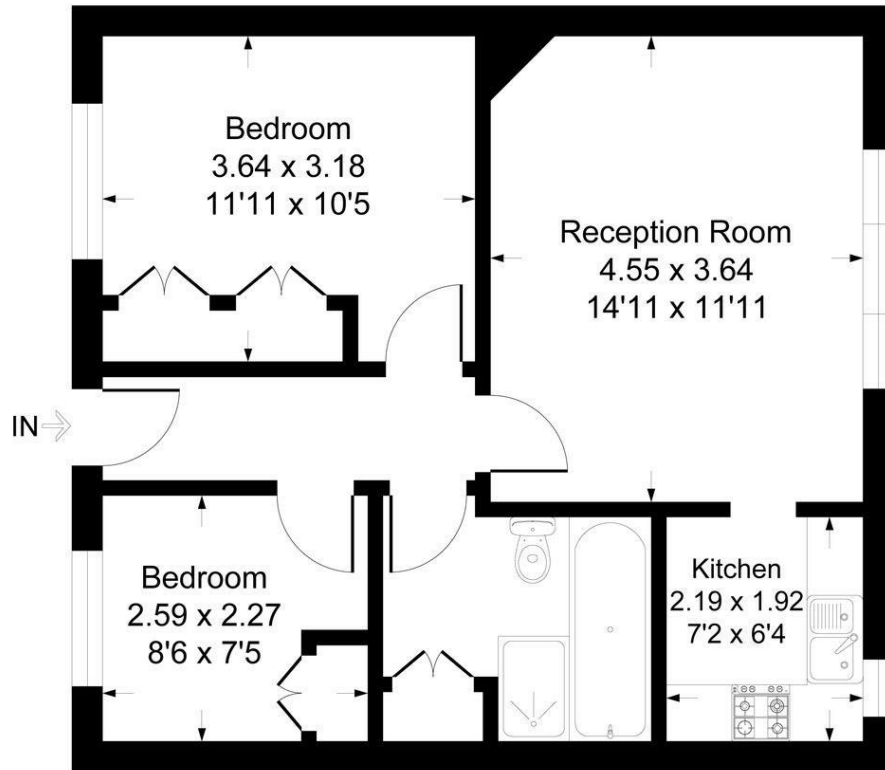
Westerham Road

Keston, BR2 6HF

EPC RATING: D COUNCIL TAX BAND: B

Towerfields, Westerham Road, BR2

Approximate Gross Internal Area 51.1 sq m / 551 sq ft



Ground Floor



This plan is for layout guidance only. Not drawn to scale unless stated. Windows and door openings are approximate. Whilst every care is taken in the preparation of this plan, please check all dimensions, shapes and compass bearings before making any decisions reliant upon them.
Produced By Planpix



2

1

1

Energy Efficiency Rating		Current	Potential
Very energy efficient - lower running costs			
(92 plus)	A		
(81-91)	B		
(69-80)	C		
(55-68)	D	68	
(39-54)	E		
(21-38)	F		
(1-20)	G		
Not energy efficient - higher running costs			
England & Wales		EU Directive 2002/91/EC	



Agents Note: Whilst every care has been taken to prepare these particulars, they are for guidance purposes only. All measurements are approximate and are for general guidance purposes only and whilst every care has been taken to ensure their accuracy, they should not be relied upon and potential buyers/tenants are advised to recheck the measurements



OFFICE ADDRESS

57 Station Approach
Hayes
Kent
BR2 7EB

OFFICE DETAILS

020 8462 0360
infohy@sinclairhammelton.co.uk