



Leighton Road, NW5

£3,600 Per calendar month

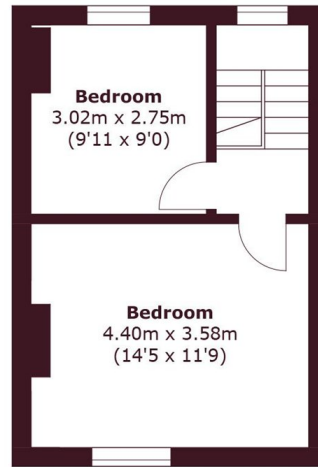
A three-bedroom early Victorian end-of-terrace house arranged over three floors. The property features an open-plan living area, a modern bathroom, three well proportioned bedrooms, and a private garden.

Leighton Road is located in the heart of Kentish Town only a short walk away from Kentish Town Tube Station (Northern Line) and local amenities and shops.

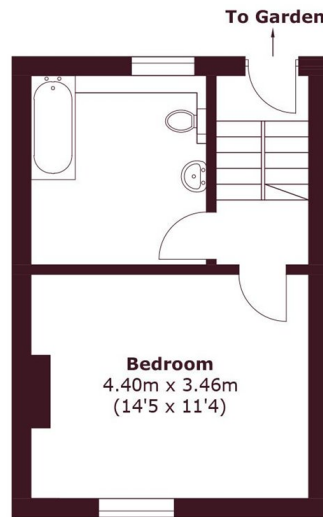
Features

- Three Bedrooms
- Open Plan Living-Kitchen
- Sach Windows
- Private Garden
- Local Amenities
- Great Transport Links

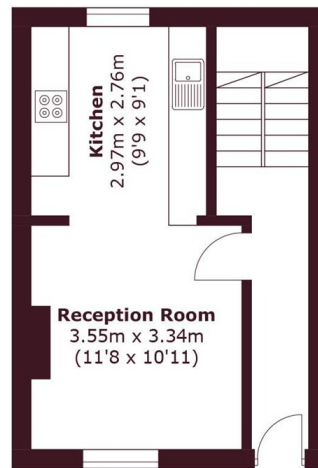
Leighton Road,
London, NW5



First Floor



Basement



Ground Floor

Total area (approx.): 88.7 sq. m (954.7 sq. ft)
(Including Basement)