



Guide Price
£280,000

Freehold

4x  1x  2x 

**Nightingale Road,
Dover, Kent, CT16**

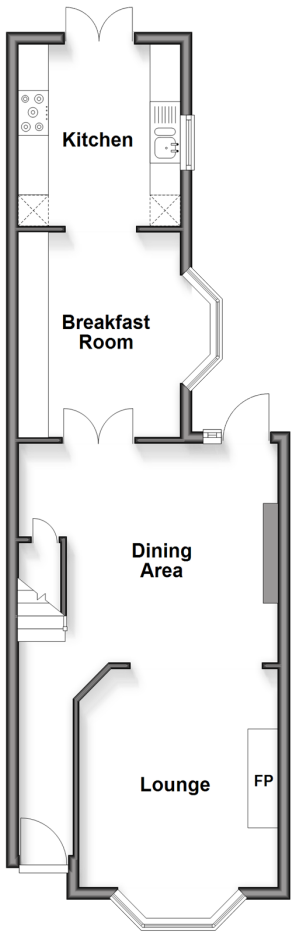
OVER 60?

Secure this property
for up to **59% less!**

Wards
Helping you move forwards

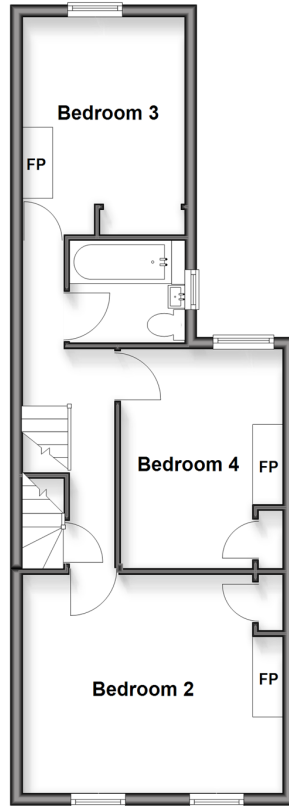
Ground Floor

Approx. 48.3 sq. metres (520.4 sq. feet)



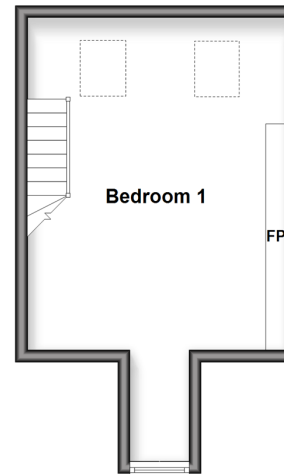
First Floor

Approx. 45.5 sq. metres (489.4 sq. feet)



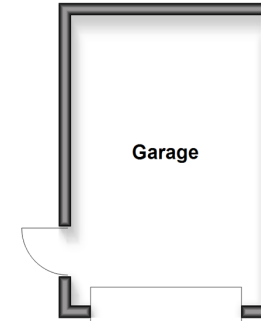
Second Floor

Approx. 25.0 sq. metres (269.1 sq. feet)



Outbuilding

Approx. 14.9 sq. metres (160.6 sq. feet)



Accommodation

GROUND FLOOR

Entrance Hallway

Lounge : 13'6 x 10'8 (4.12m x 3.25m)

Dining Area : 14'9 x 11'6 (4.50m x 3.51m)

Breakfast Room : 10'8 x 10'5 (3.25m x 3.18m)

Kitchen: 9'6 x 8'8 (2.90m x 2.64m)

FIRST FLOOR

Landing

Bedroom 3 : 11'9 x 8'8 (3.58m x 2.64m)

Bathroom : 6'1 x 5'4 (1.86m x 1.63m)

Bedroom 4: 11'7 x 8'7 (3.53m x 2.62m)

Bedroom 2: 14'3 x 11'7 (4.35m x 3.53m)

SECOND FLOOR

Bedroom 1: 17'6 x 14'3 (5.34m x 4.35m)

OUTBUILDING

Garage

OUTSIDE

Front Garden

Rear Garden

Off Road Parking

Shed



Main features

- Move in without lifting a finger
- Converted loft, providing high ceilings & period features
- Off-street parking and a private garage
- Walking distance of local shops & schools
- Superb transport links with Dover Priory railway station with its fast links to London



Nearest Schools

Primary Schools: Barton Junior School 0.1 miles, Charlton C of E Primary 0.2 miles, Priory Fields School 0.4 miles
Secondary Schools: Dover Grammar School for Girls 0.2 miles, St Edmund's Catholic School 0.3 miles, Dover College 0.5 miles.



Transport Information

Train Stations: Dover Priory 0.5 miles, Kearsney 1.6 miles, Martin Mill 3.3 miles



Address

Nightingale Road, Dover, Kent, CT16



Directions

For directions to this property please contact us.



Wards
Helping you move forwards

Call Dover Branch 01304 214876 ■ wardsofkent.co.uk



■ Through a Homewise Home For Life Plan people aged 60+ can secure this property for up to 59% less, by purchasing a Lifetime Lease



10736084/20260331/TE/OV