

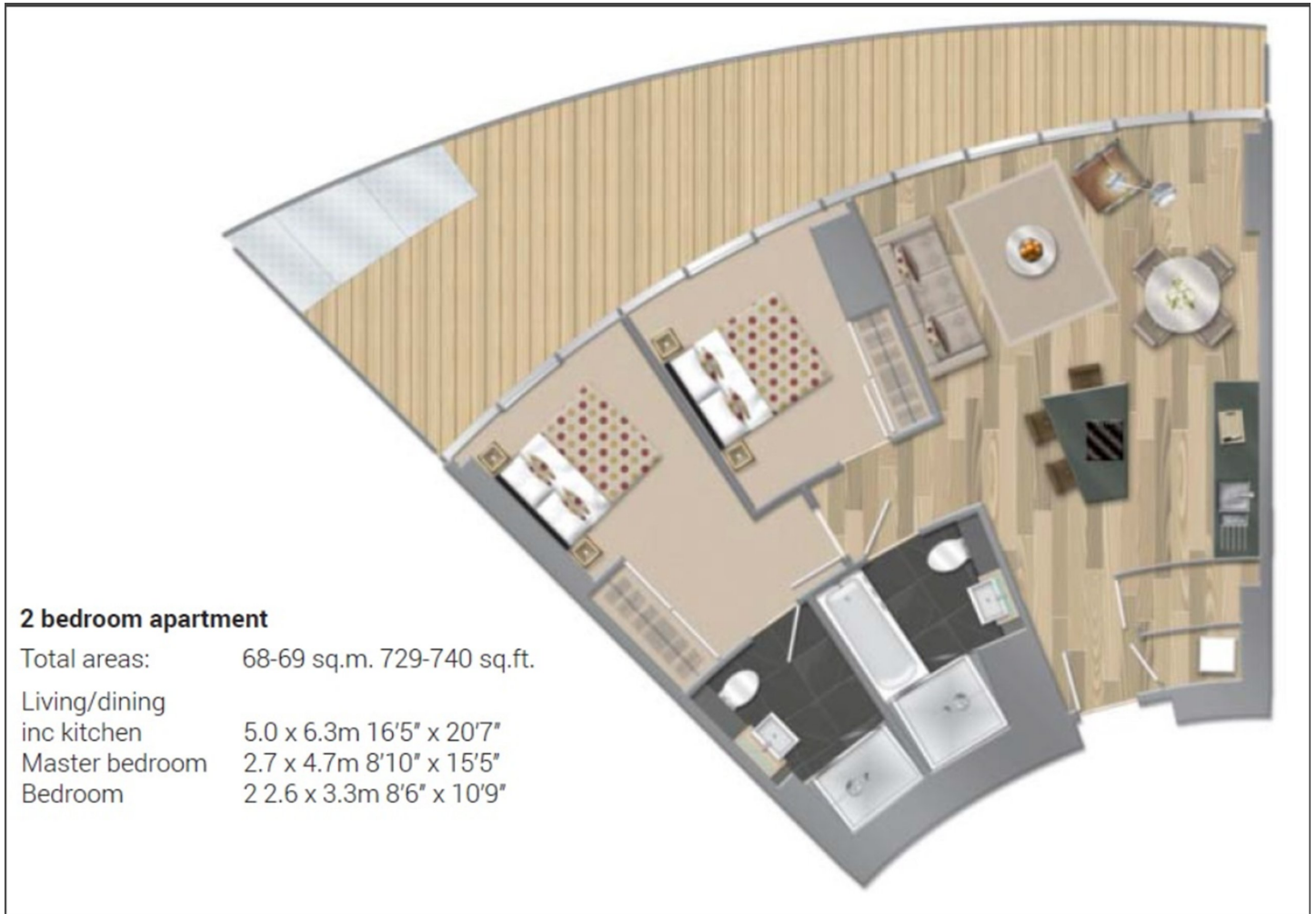


## ARENA TOWER, E14

**£650,000**

This 2 Bedroom apartment comes fully furnished with a high specification throughout, under floor heating, fully integrated Smeg appliances and built in wardrobes in the bedroom. This apartment also boasts its own private balcony.

- 24 hour concierge
- Gym & Spa
- Service charge: £6,171
- Ground rent: £750



**LiFE RESIDENTIAL**

36 Millharbour, London, E14

9JS

Sales: 020 3668 1033

Lettings: 020 3668 1030

Energy Rating: . We aim to make our particulars both accurate and reliable. However they are not guaranteed; nor do they form part of an offer or contract. If you require clarification on any points then please contact us, especially if you're traveling some distance to view. Please note that appliances and heating systems have not been tested and therefore no warranties can be given as to their good working order.