



## Wolverton Avenue, KT2

£6,950 Per calendar month

This is a stunning example of an Edwardian family home offering ample space. The property has been stylishly extended and refurbished by the owner giving a superb mix of living and entertaining space.

Wolverton Avenue is a delightful residential road perfectly located just a short stroll to Norbiton Station and Richmond Park. Kingston town centre is less than a mile away along with the River Thames, you have everything Kingston has to offer including a selection of highly rated schools.

### Features

- Detached Family Home
- Air Conditioning, Underfloor Heating and Great Entertainment System
- Swim Up Spa And Sauna
- Five Bedrooms
- Great Location For Several Amenities
- Private Garage



## Wolverton Avenue, KT2

The ground floor consists of a welcoming entrance, with herringbone oak parquet flooring leading from the front door to the open plan kitchen/dining area. On the left as you enter you have a large family room.

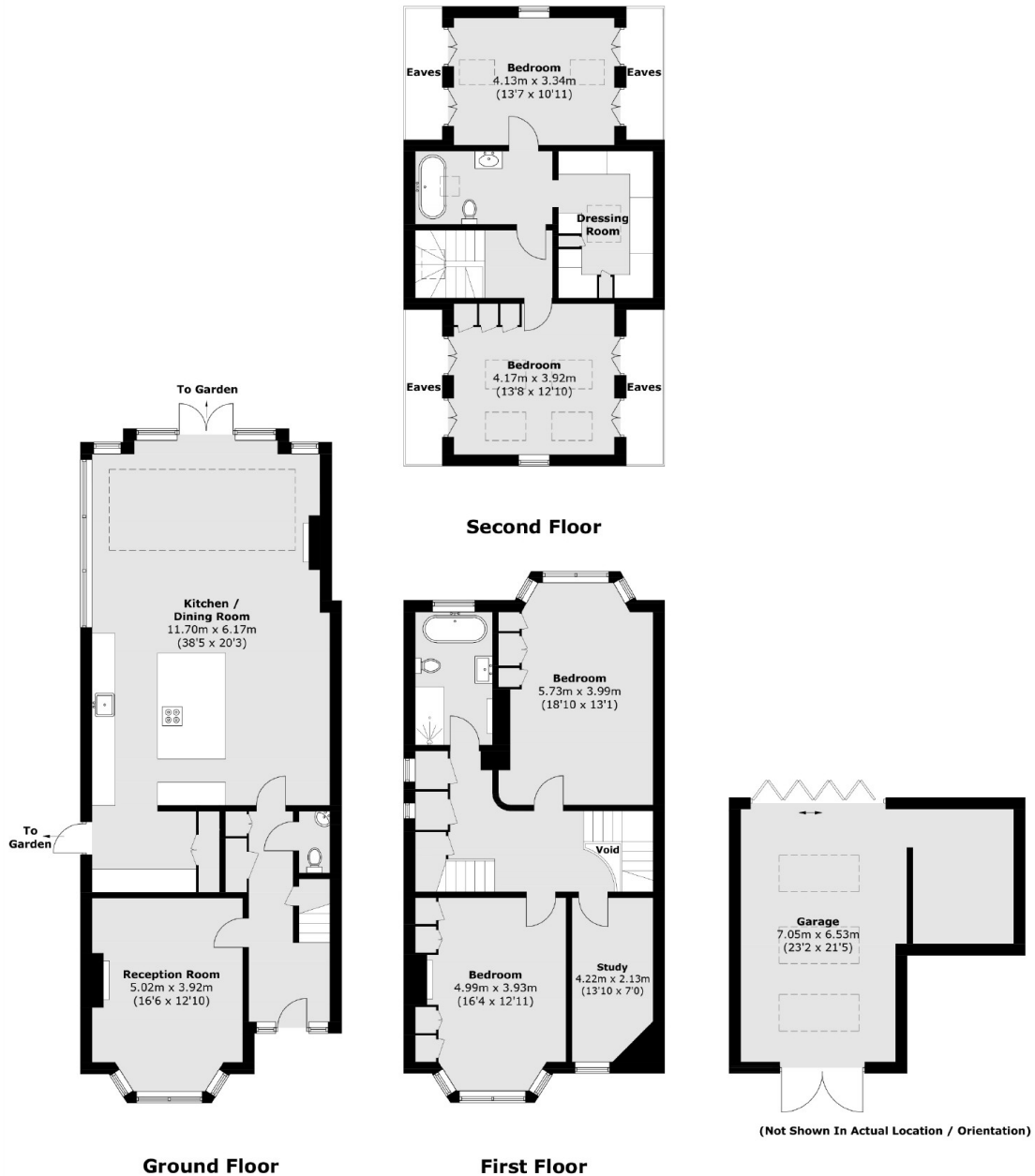
The kitchen itself is beautifully done with solid marble work surfaces, a well-designed, fully fitted cabinetry complete with a large walk in larder. There is also dining space and a second reception room offering additional flexible living accommodation.

On the first floor there is a large principal bedroom with incredible ceiling height and a luxurious bathroom where the herringbone theme is continued. There is also a well sized second and third bedroom as well as a lovely family bathroom.

The top floor has two further bedrooms, a beautiful walk in wardrobe and modern four piece bathroom suite. The stunning doors at the back open onto a well thought out private garden with seating and social areas as well as a swim up spa and sauna.



# Wolverton Avenue, Kingston Upon Thames, KT2



Total area (approx.): 227.4 sq. m (2,447.7 sq. ft)  
Garage (approx.): 37.7 sq. m (405.8 sq. ft)  
(Excluding Eaves / Void)