



Bruce Road, CR4

£375,000

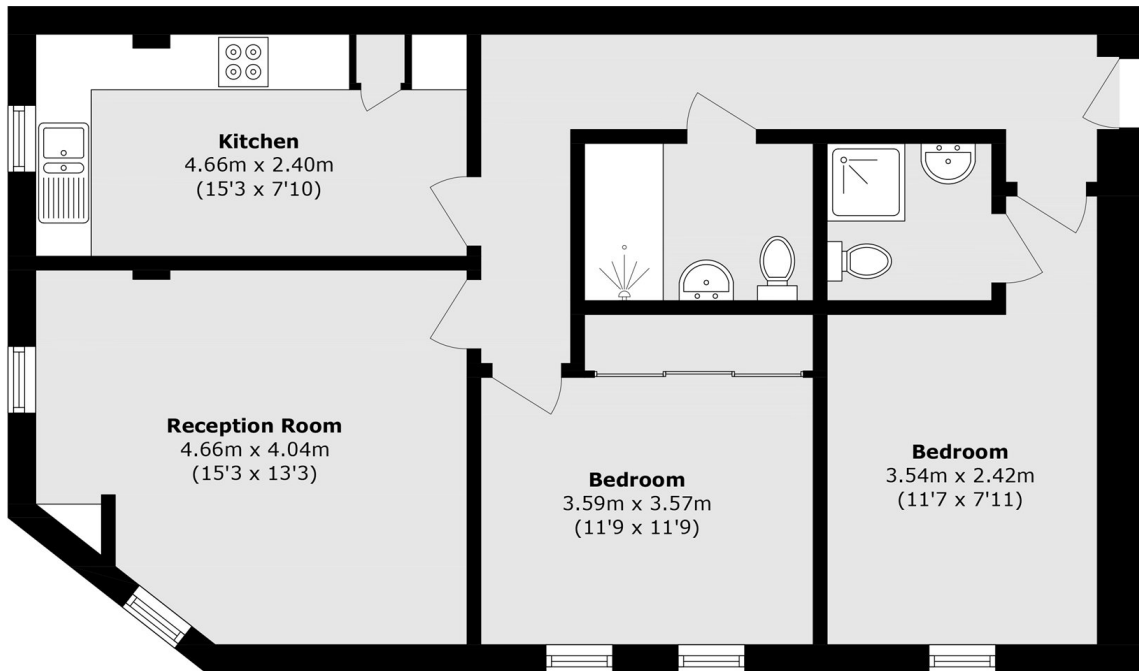
A larger than average and well positioned two double bedroom apartment extending to over 800 sqft with accommodation comprising a generous reception room, a stylish kitchen with a comfortable dining area, two bedrooms and two bathrooms. The property is sold chain free.

Bruce Road is a quiet residential street with easy access to Tooting Overground (Thameslink) providing quick train routes in to central London, the Northern Line Tube is also located close by in Tooting Broadway. The property has an excellent array of local shopping amenities nearby, including the popular Tooting Market. Figge's Marsh is located at the end of Bruce road offering a large open green space.

Features

- Two Double Bedrooms
- Two Bathrooms
- Separate Reception Room
- Stylish Kitchen
- Desirable Location
- Chain Free

Bruce Road, Mitcham, CR4



Total area (approx.): 75.8 sq. m (815.9 sq. ft)