



Beaufort Gardens, SW3

£900,000

Dexters



Beaufort Gardens, SW3

A beautifully presented two spacious bedroom property situated in the heart of Beaufort Gardens, one of Knightsbridges most exclusive residential addresses. Offered with no onward chain, this superb home enjoys delightful views over the gardens, providing a rare sense of peace and greenery in such a prime central London location. The property combines generous proportions with excellent natural light, creating an inviting and versatile living space ideal for modern city living.

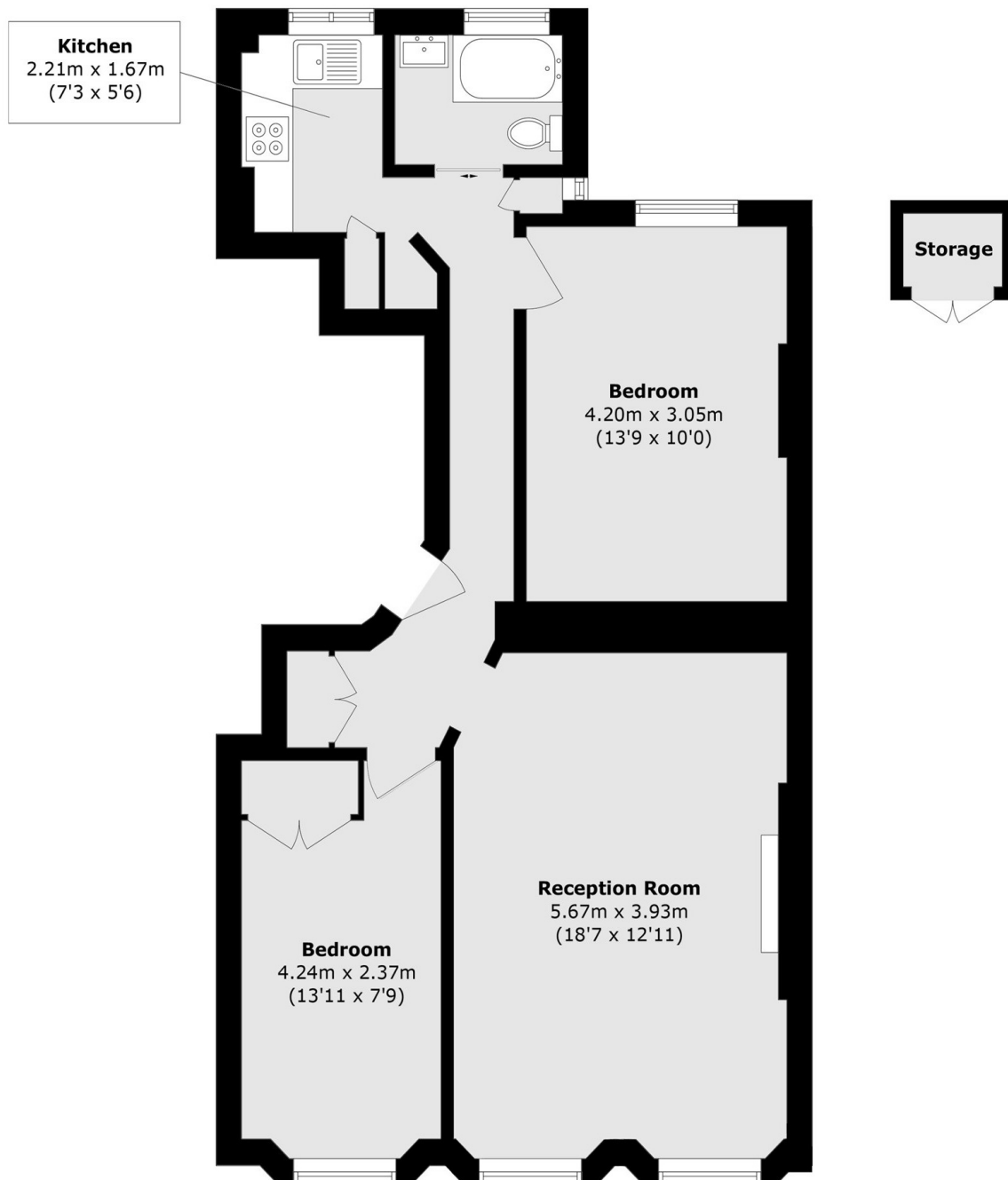
Beaufort Gardens is just moments from some of London's most iconic destinations, including Harrods, Hyde Park, and the luxury boutiques of Sloane Street. This property offers excellent transport links across London to keep you connected to all parts of the city.

Features

- No Ongoing Chain
- Panoramic Views
- Highly Sought After Location
- Walking Distance Of Harrods
- Two Spacious Bedrooms
- Extended Lease



Beaufort Gardens, London, SW3



Total area (approx.): 63.8 sq. m (686.7 sq. ft)

Storage area (approx.): 0.9 sq. m (9.6 sq. ft)