

sansome  
& george

SANSOME  
& GEORGE



Glenapp Grange, Mortimer Common

In Excess of £210,000

## 18 Glenapp Grange

Mortimer Common, Reading

Sansome & George - Introducing this charming 2-bedroom Retirement apartment situated in Mortimer Village. Boasting a generous 633 sq ft of living space on the first floor, this property offers a perfect blend of comfort and convenience. The apartment exudes a warm and inviting atmosphere, making it an ideal place to call home. Residents will benefit from a designated parking area, ensuring hassle-free parking at all times. Whether you're looking for a retirement property or simply seeking a tranquil abode, this apartment ticks all the boxes. Don't miss out on the opportunity to own this delightful property in a sought-after location. Contact us today to arrange a viewing and experience the charm of village living at its finest.

Local Authority - West Berkshire Council

Council Tax Band - C

Lease - Share of Freehold

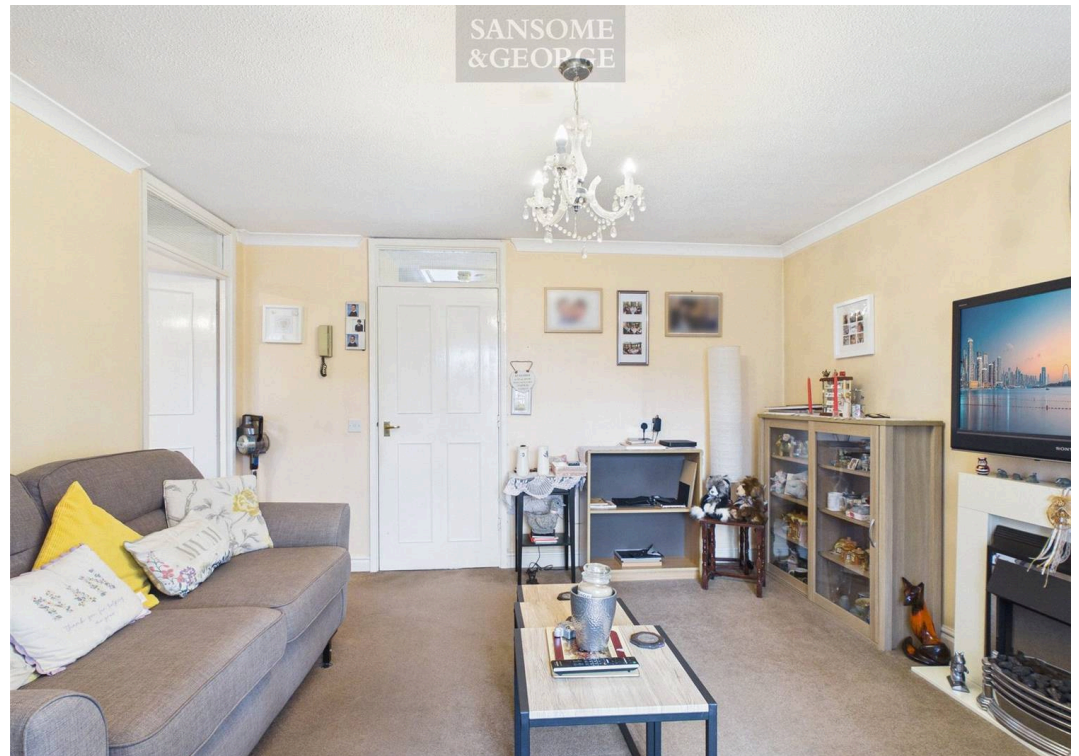
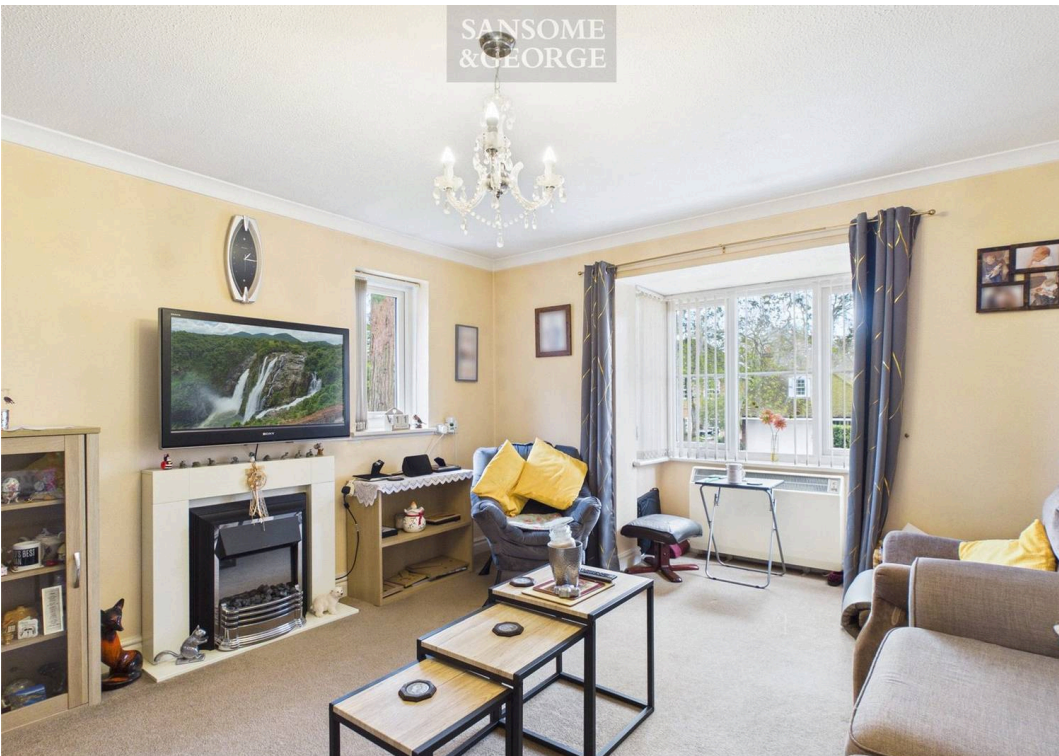
Service Charge - £1440 PA

Lease years remaining: 156 Years

EPC Energy Efficiency Rating: C

EPC Environmental Impact Rating:





SANSOME  
& GEORGE

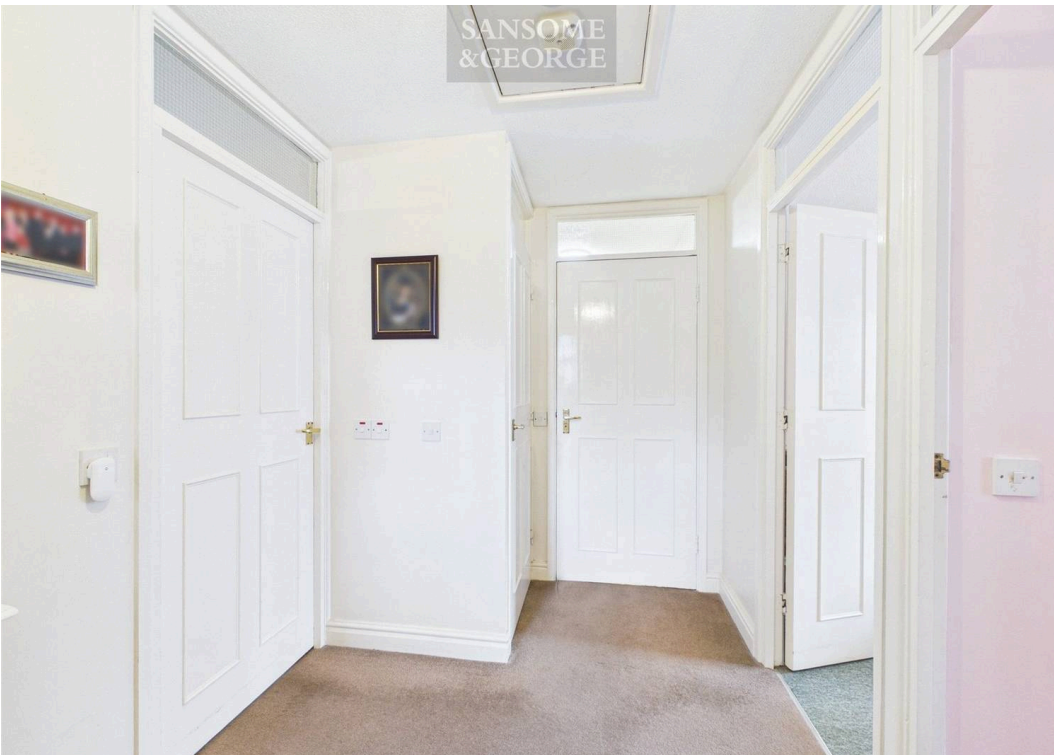
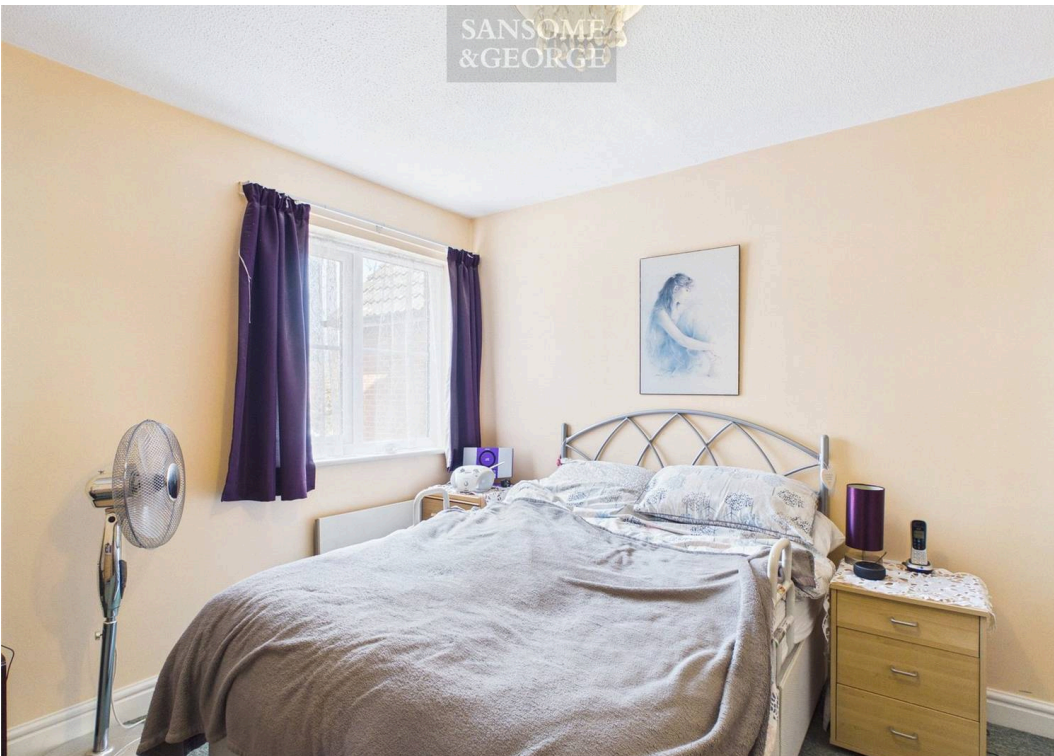
## 18 Glenapp Grange

Mortimer Common, Reading

- 2 Bedroom First floor apartment Over 55
- Over 55's
- Hallway
- Living room
- Kitchen
- 2 Bedrooms
- Bathroom
- No Onward chain



sansome  
& george





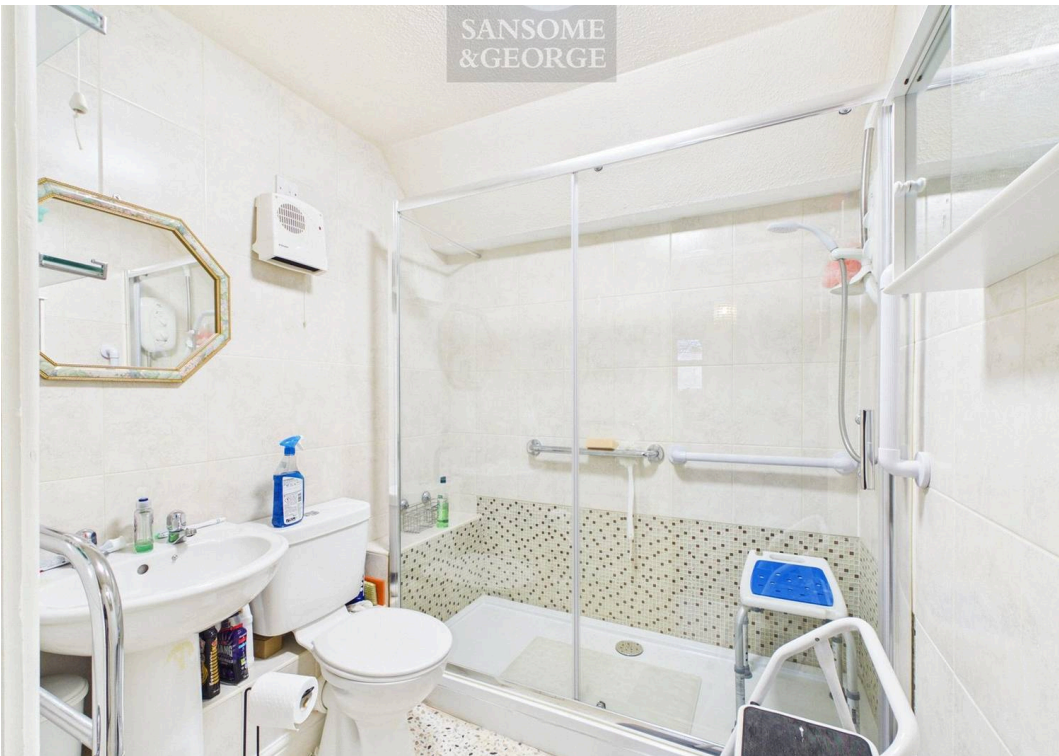
Approximate total area<sup>m</sup>  
633 ft<sup>2</sup>

(1) Excluding balconies and terraces

Calculations reference the RICS IPMS 3C standard. Measurements are approximate and not to scale. This floor plan is intended for illustration only.

GIRAFFE360







## Sansome & George Mortimer Office

Sansome & George, 45 Aborn Parade West End Road - RG7 3TQ

0118 933  
1773

• [mortimer@sansomeandgeorge.co.uk](mailto:mortimer@sansomeandgeorge.co.uk) • [www.sansomeandgeorge.co.uk/](http://www.sansomeandgeorge.co.uk/)