

## Bowen Court, The Drive, Hove, BN3 3JF

Approximate Gross Internal Area = 73.9 sq m / 795 sq ft

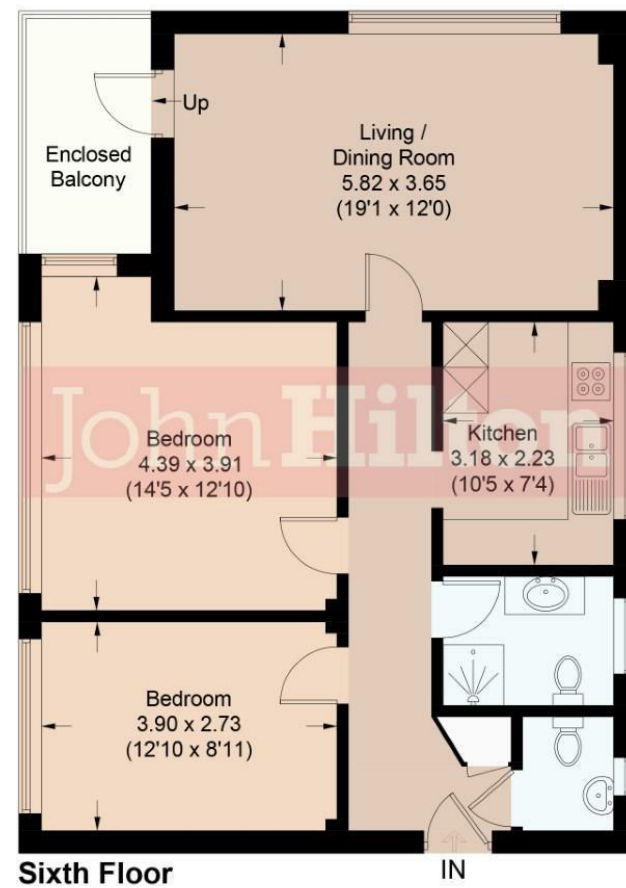


Illustration for identification purposes only, measurements are approximate, not to scale. Imageplansurveys @ 2026



Total Area Approx 795.00 sq ft

41 Bowen Court, The Drive, Hove, BN3 3JF

To view, contact John Hilton:  
52 High Street, Rottingdean, BN2 7HF  
132-135 Lewes Road, Brighton, BN2 3LG  
01273 608151 or sales@johnhiltons.co.uk

## £369,500

## Leasehold - Share of Freehold

