



*jordan fishwick*

**MANCHESTER**  
Wilmslow Road



**Wilmslow Road,  
Manchester, M20 3BW**  
**£1,200 Per Calendar Month**



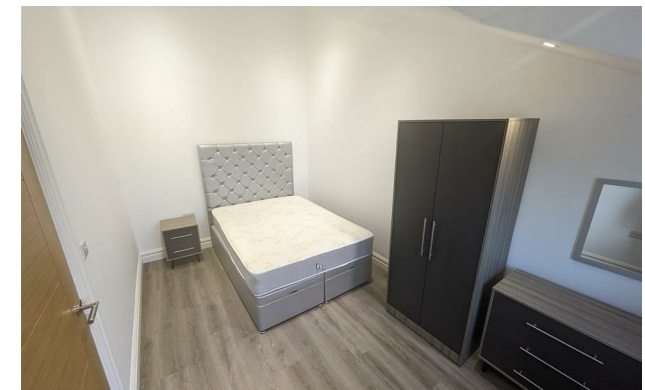
### The Property

**\*\*\* AVAILABLE JUNE \*\*\*** A spacious and superbly presented one bedroom apartment situated in the heart of Withington Village, located in close proximity to local bars, shops and bus routes into the City Centre. The property has recently been refurbished to an extremely high standard and is perfect for a single occupant or a professional couple. In brief the property comprises; entrance hall, a bright and spacious living area which includes a brand new fitted kitchen including appliances, a spacious double bedroom and a newly fitted modern bathroom. Please note that the property will be fully furnished. Internet and a full Sky TV package to be included in the rental figure. Viewings is highly recommended. Please call our Didsbury office to arrange a viewing.

EPC Rating - C // Council Tax Band A

### Directions

M20 3BW



- Available June
- One Bedroom Apartment
- Fully Furnished
- Ideal for Single Occupant or Couple
- Newly Refurbished
- Modern High Standard Throughout
- Fantastic High Street Location
- WiFi & Sky Package Included
- Hive Central Heating System
- EPC Rating C / Council Tax Band A

**Postcode - M20 3BW**

**EPC Rating - C**

**Floor Area - sq ft**

**Local Authority - Manchester**

**Council Tax - A**





These particulars are believed to be accurate but they are not guaranteed and do not form a contract. Neither Jordan Fishwick nor the vendor or lessor accept any responsibility in respect of these particulars, which are not intended to be statements or representations of fact and any intending purchaser or lessee must satisfy himself by inspection or otherwise as to the correctness of each of the statements contained in these particulars. Any floorplans on this brochure are for illustrative purposes only and are not necessarily to scale.

Offices also at: Wilmslow, Macclesfield, Hale, Sale, Chorlton, Glossop, Manchester & Salford

757-759 Wilmslow Road, Didsbury Village, Manchester

**0161 445 4480**

[didsbury@jordanfishwick.co.uk](mailto:didsbury@jordanfishwick.co.uk)  
[www.jordanfishwick.co.uk](http://www.jordanfishwick.co.uk)