



Longworth Road, Tupsley, Hereford

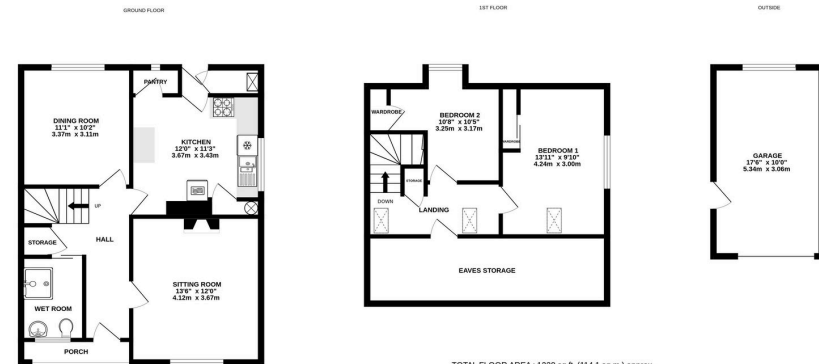
Guide Price £295,000

🛏️ 2 🚿 1 🚗 2



- No Onward Chain
- Popular Tupsley Location
- Lanscaped Mature Garden
- Large Driveway & Garage





TOTAL FLOOR AREA: 1228 sq. ft. (114.1 sq. m.) approx.
 While every attempt has been made to ensure the accuracy of the footprint contained here, measurements of doors, windows, rooms and any other items are approximate and no responsibility is taken for any error, omission or mis-statement. This plan is for illustrative purposes only and should be used as such by any prospective purchaser. The services, systems and specifications shown here have not been tested and no guarantee as to their operability or efficiency can be given.
 Made with Metrage C2025

A Well Presented 2 Bedroom Semi-Detached Dormer Bungalow, with a mature westerly facing garden, driveway parking and garage, situated in the sought-after Tupsley area of Hereford. Offered With No Onward Chain.

This well maintained dormer bungalow is ideally suited to those seeking a manageable yet spacious home in a popular residential location. The property is neatly presented throughout and benefits from a particularly attractive, mature rear garden, generous driveway parking and a detached single garage.

