



Harmer Road, Norwich, NR3 3QF

welcome to

Harmer Road, Norwich

This THREE BEDROOM TERRACED IN A SOUGHT AFTER NR3 POSTCODE is the perfect buy for a first time buyer investor or those looking to upsize.

!! Call the office to book your viewing now !!



Lounge

14' 4" Max x 11' 4" Max (4.37m Max x 3.45m Max)

Double glazed window to front, Wood flooring, Brick fireplace with decorative radiator in front, radiator.

Kitchen

11' 6" Max x 9' 3" Max (3.51m Max x 2.82m Max)

Tilled Flooring, range of Wall and Base units, Space for Fridge Freezer, Stainless steel sink and strainer, Oven with Gas hob. Radiator.

Conservatory

15' 6" Max x 9' Max (4.72m Max x 2.74m Max)

Laminate flooring, Double doors to rear, space for washing machine/tumble dryer. Double Glazed Windows to rear.

Bathroom

Vinyl Flooring, walk in electric shower, WC, Hand wash basin, partially tiled walls. Radiator.

Bedroom 1

17' 3" Max x 10' Max (5.26m Max x 3.05m Max)

Laminate flooring, Radiator, Double glazed window to front aspect, storage space.

Bedroom 2

10' 8" Max x 8' 7" Max (3.25m Max x 2.62m Max)

Double glazed window to Rear aspect, Radiator, laminate flooring.

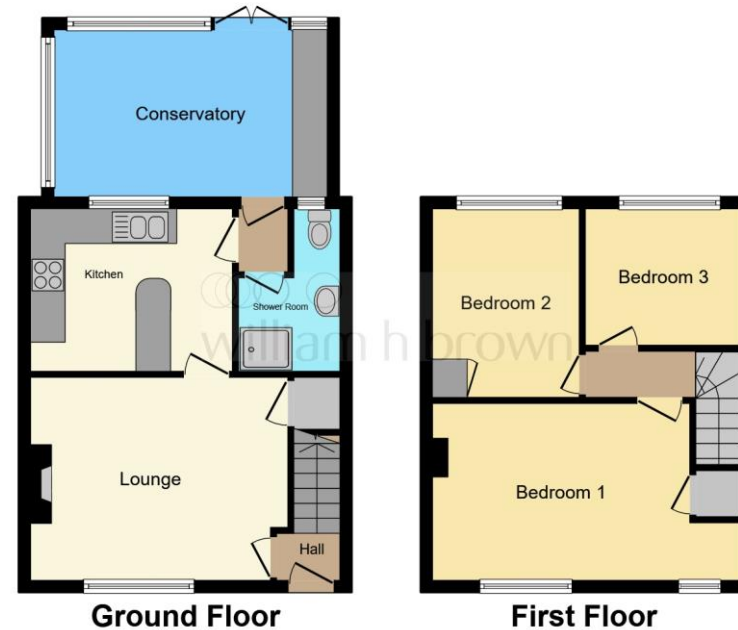
Bedroom 3

9' Max x 7' 8" Max (2.74m Max x 2.34m Max)

Double glazed window to rear aspect. Laminate flooring, Radiator.

Outside

To the front there is a driveway suitable for two cars, to the rear a full enclosed low maintenance shingle garden with a rear access gate. In addition to this there is a raised decking area to the rear of the house.



This floor plan is for illustrative purposes only. It is not drawn to scale. Any measurements, floor areas (including any total floor area), openings and orientation are approximate. No details are guaranteed, they cannot be relied upon for any purpose and they do not form part of any agreement. No liability is taken for any error, omission or misstatement. A party must rely upon its own inspection(s). Powered by www.focalagent.com



view this property online williamhbrown.co.uk/Property/NOR142096



welcome to

Harmer Road, Norwich

- Fully enclosed rear garden with multiple storage sheds
- A sizeable conservatory
- Modern fitted kitchen with breakfast bar.
- Perfect buy for a first time buyer investor or those looking to upsize.
-

Tenure: Freehold EPC Rating: D

Council Tax Band: B

£210,000



Please note the marker reflects the postcode not the actual property

view this property online williamhbrown.co.uk/Property/NOR142096



Property Ref:
NOR142096 - 0004

1. MONEY LAUNDERING REGULATIONS Intending purchasers will be asked to produce identification documentation at a later stage and we would ask for your co-operation in order that there is no delay in agreeing the sale. 2. These particulars do not constitute part or all of an offer or contract. 3. The measurements indicated are supplied for guidance only and as such must be considered incorrect. Potential buyers are advised to recheck measurements before committing to any expense. 4. We have not tested any apparatus, equipment, fixtures or services and it is in the buyers interest to check the working condition of any appliances. 5. Where an EPC, or a Home Report (Scotland only) is held for this property, it is available for inspection at the branch by appointment. If you require a printed version of a Home Report, you will need to pay a reasonable production charge reflecting printing and other costs. 6. We are not able to offer an opinion either written or verbal on the content of these reports and this must be obtained from your legal representative. 7. Whilst we take care in preparing these reports, a buyer should ensure that his/her legal representative confirms as soon as possible all matters relating to title including the extent and boundaries of the property and other important matters before exchange of contracts.

William H Brown is a trading name of Sequence (UK) Limited which is registered in England and Wales under company number 4268443, Registered Office is Cumbria House, 16-20 Hockliffe Street, Leighton Buzzard, Bedfordshire, LU7 1GN. VAT Registration Number is 500 2481 05.



william h brown



01603 760044



norwich@williamhbrown.co.uk



5 Bank Plain, NORWICH, Norfolk, NR2 4SF



williamhbrown.co.uk