

OVER 60?

Secure this property
for up to **59% less!**



Offers Over
£575,000
Freehold

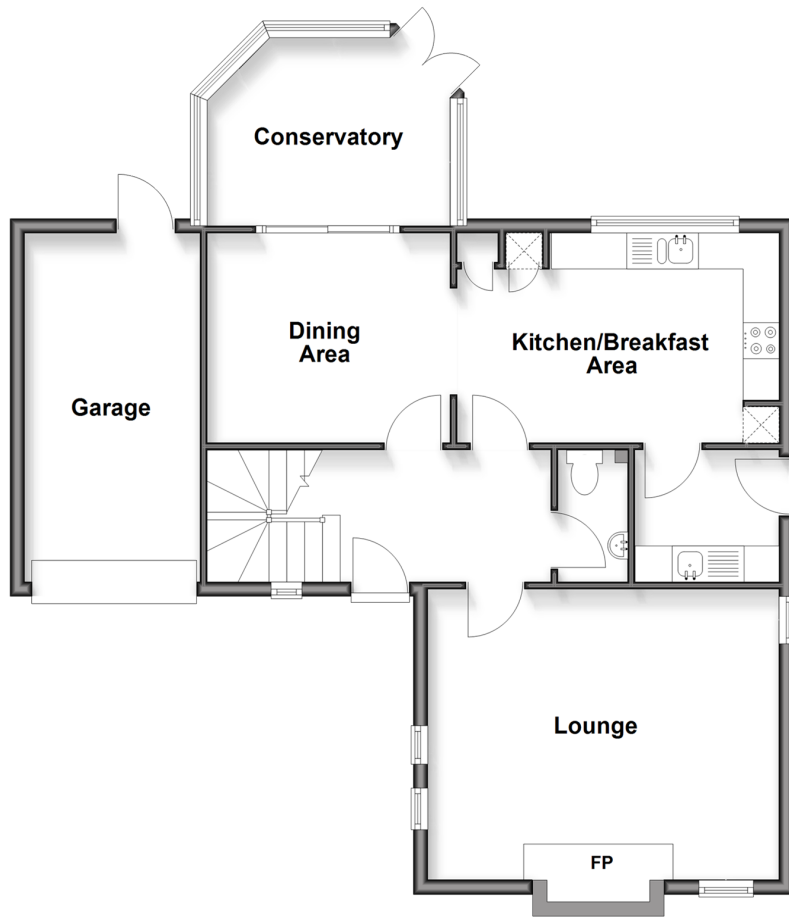
4x  2x  1x 

Rectory Close, Ashington, Pulborough,
West Sussex, RH20

cubitt & west
Helping you move forwards

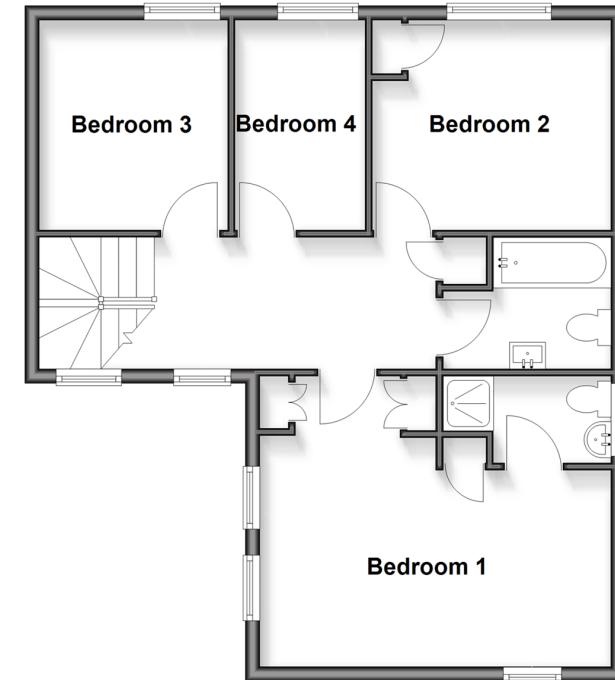
Ground Floor

Approx. 79.4 sq. metres (855.0 sq. feet)



First Floor

Approx. 58.7 sq. metres (631.8 sq. feet)



Accommodation

GROUND FLOOR

Entrance Hall

Cloakroom

Lounge: 16'0 x 13'2 (4.88m x 4.02m)

Kitchen/Breakfast Area: 14'6 x 9'5 (4.42m x 2.87m)

Utility Room: 6'7 x 6'1 (2.01m x 1.86m)

Dining Area: 11'11 x 9'6 (3.63m x 2.90m)

Conservatory: 11'8 x 8'4 (3.56m x 2.54m)

FIRST FLOOR

Landing

Family Bathroom

Bedroom 1: 16'1 x 13'2 into fitted wardrobes (4.91m x 4.02m)

En Suite Shower Room

Bedroom 2: 10'9 x 9'6 into fitted wardrobes (3.28m x 2.90m)

Bedroom 3: 9'6 x 8'7 (2.90m x 2.62m)

Bedroom 4: 9'6 x 6'1 (2.90m x 1.86m)

OUTSIDE

Garage: 16'9 x 8'1 (5.11m x 2.47m)

Driveway

Front and Rear Garden



Main features

- Attractive and well presented home, built by Hillreed Homes in 1999
- Lovely location in a quiet cul de sac, countryside views to the rear
- Triple aspect lounge with inglenook fire place . Stylish updated family bathroom
- Double width driveway and garage
- Secluded sunny aspect rear garden, enjoying nature and wonderful sunsets



Nearest Schools

Primary Schools: Ashington C of E School 0.6 miles.

Secondary Schools: Steyning Grammar Lower School, Rock Road site 3.1 miles, Upper School, Shooting Field site 5.2 miles.



Transport Information

Train Stations: Billingshurst 9.7 miles, Horsham 15.2 miles.



Address

Rectory Close, Ashington, Pulborough, West Sussex, RH20



Directions

For directions to this property please contact us.



cubitt&west
Helping you move forwards

Call Ashington Branch 01903 891444 ■ cubittandwest.co.uk



■ Through a Homewise Home For Life Plan people aged 60+ can secure this property for up to 59% less, by purchasing a Lifetime Lease



23603767/20260430/LI/HM1