



📍 6 Nursery Barns Woodborough, Near Pewsey, SN9 5PF

🏠 £435,000

A charming three end of terraced home set in the highly regarded village of Woodborough

- Three Bedroom End of Terrace Home
- Beautiful Village
- Walking Distance to Cafes, Pub and Garden Centre
- Front and Rear Gardens
- Allocated Private Parking
- Abundance of Surrounding Countryside Walks
- Short Drive to Pewsey Main Line Train Station
- Extra parcel of garden included

🏠 Freehold

🏠 EPC Rating E



Nestled within the picturesque setting of Nursery Barns in Woodborough, this stunning 19th-century barn conversion exudes rustic charm and timeless character. Thought to have originally built in the 1800s, the property was thoughtfully transformed in the 1990s into a beautifully finished home that seamlessly blends historic features with contemporary comfort.

Upon entering, you are welcomed into a spacious and inviting interior that retains many original features adding to its authentic barn appeal. The ground floor comprises a generous reception room with log burner, and French doors to rear garden. Adjacent is a versatile dining space, flowing naturally into the kitchen/breakfast room. The kitchen is fitted with quality appliances, ample storage, and worktop space, making it the heart of the home. Barn door from the kitchen open onto the rear garden, creating a seamless indoor-outdoor living experience. On the ground floor there is a third double bedroom with en-suite toilet and further room for a bath to be fitted

Upstairs, the property offers two well-proportioned double bedrooms. The family bathroom features modern fixtures and fittings, completing the upper level. Throughout the home, natural light flood through generously sized windows, enhancing the warm, inviting atmosphere.

Externally, the front garden is laid to lush, well-maintained lawn, giving the property charming kerb appeal. The rear garden is a true private haven—fully enclosed by a traditional brick wall—featuring a paved patio ideal for summer entertaining, established flower beds, and a variety of shrubs that add colour and texture. A handy garden shed provides extra storage, while the mature planting creates a tranquil retreat to enjoy all year round.

The property benefits from allocated parking spaces, with additional shared parking available within the development, ensuring convenience for residents and visitors.

Property Information

Tenure: Freehold
Local Authority: Wiltshire Council
Mains water, electric, drainage and electric heating
Council Tax Band: E
EPC Rating: E

Location

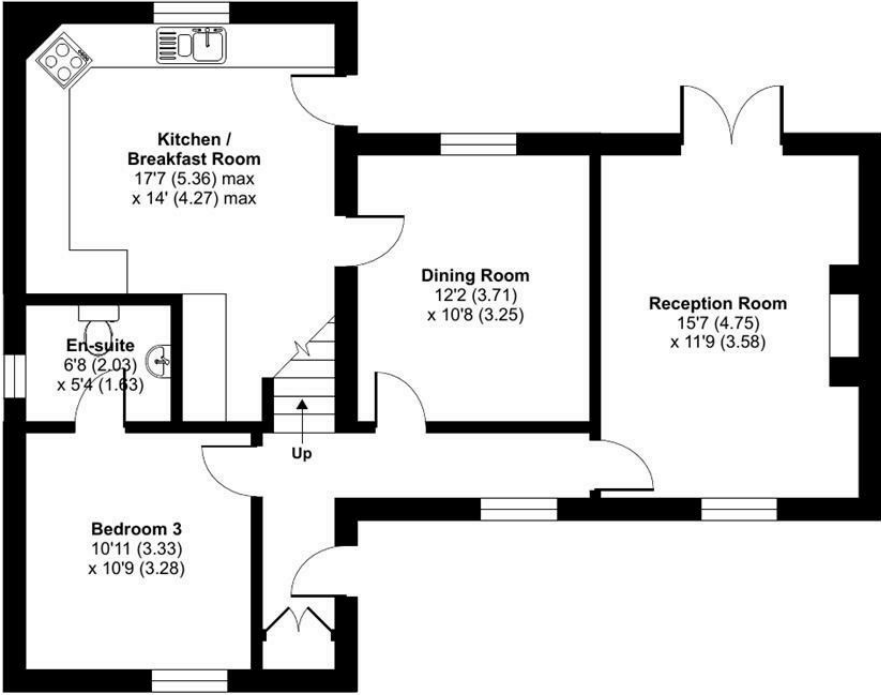
Situated in the charming village of Woodborough, 6 Nursery barns is conveniently close to local amenities, including a well-regarded village pub. The village offers a garden centre/café, a church, and a highly sought-after primary school. Within easy reach are renowned independent schools such as St Francis, St Margaret's, St Mary's, Dauntsey's, and Marlborough College. The larger towns of Pewsey (3.5 miles), Marlborough (8.9 miles), and Devizes (9.8 miles) provide a wide range of leisure facilities, supermarkets, doctors' surgeries, and secondary schools. For commuters, the M4 Junction 15 is approximately 16.6 miles away, the A303 is about 11.3 miles, and the nearest railway station at Pewsey offers direct links to London Paddington and the West Country.



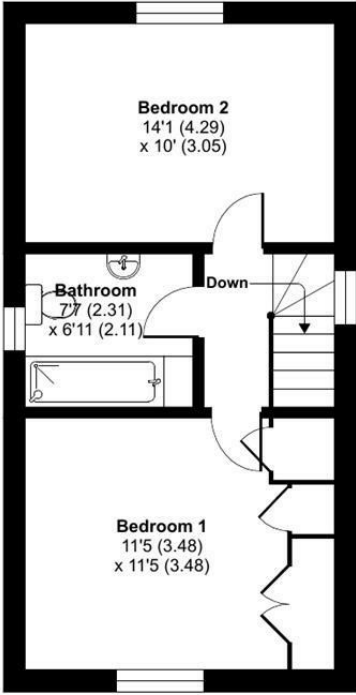
Woodborough, Pewsey, SN9

Approximate Area = 1210 sq ft / 112.4 sq m

For identification only - Not to scale



GROUND FLOOR



FIRST FLOOR

Floor plan produced in accordance with RICS Property Measurement 2nd Edition, Incorporating International Property Measurement Standards (IPMS2 Residential). © nctechcom 2026. Produced for Strakers. REF: 1416389

Disclaimer These particulars, whilst believed to be accurate are set out as a general outline only for guidance and do not constitute any part of an offer or contract. Intending purchasers should not rely on them as statements of representation of fact, but must satisfy themselves by inspection or otherwise as to their accuracy. No person in this firm's employment has the authority to make or give any representation or warranty in respect of the property. All measurements and distances are approximate only. Your home is at risk if you do not keep up repayments on a mortgage or other loan secured on it.



For further details 01380 723451
devizes@strakers.co.uk

In branch | Online | On the move
strakers.co.uk