



- SECOND FLOOR FLAT
- GAS CENTRAL HEATING
- DOUBLE GLAZING
- RESIDENTS PARKING

280 Mallard Crescent, East Kilbride, Glasgow, G75 8UQ

£595 pcm

EVE Property bring to the rental market a freshly decorated and well-presented one-bedroom second floor unfurnished flat, offering bright and spacious accommodation throughout.



## Property Description

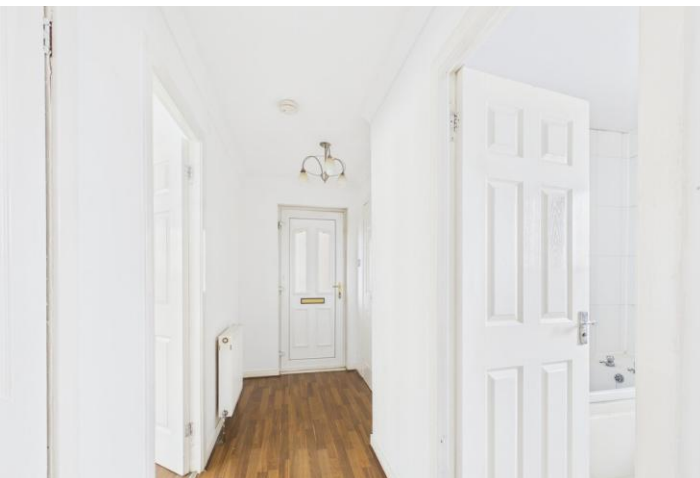
A freshly decorated and well-presented one-bedroom unfurnished flat, offering bright and spacious accommodation throughout.

The property benefits from a newly fitted kitchen, generous living space, and ample storage, making it ideal for professionals or couples seeking a comfortable home.

Additional features include modern uPVC double-glazed windows and double glazing. Decorated in modern neutral shades throughout.

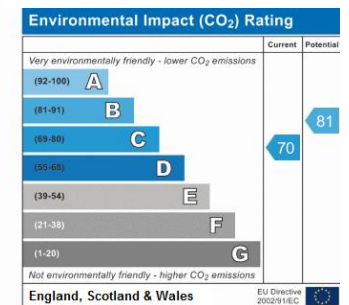
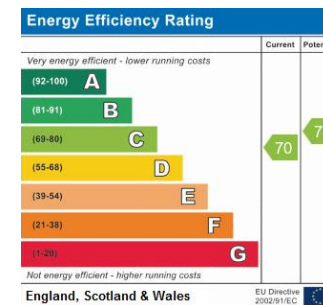
Early viewing is recommended to appreciate the space and quality of accommodation on offer.

East Kilbride offers a comprehensive range of primary and secondary schooling, and a thriving leader in commerce and technology. It is one of Scotland's largest and newest towns which continues to grow, enjoying a central locale with great bus and rail services as well as excellent motorway links providing access in and around the central belt. Additionally the town boasts a wide and varied range of shopping centres, retail parks, bars, restaurants and night life. Some of the local amenities include a multiplex cinema, ice rink, the Arts Centre, the Dollan Aqua Centre, as well as several Sports Centres, Golf Courses and numerous other recreational facilities as well as several Sports Centres, Golf Courses and numerous other recreational facilities



Landlord Registration Number: 1137503/350/13111





1 Herschell Street, Anniesland,  
Glasgow, Lanarkshire, G13 1HR

www.eve-property.co.uk  
0141 255 0020  
hello@eve-property.co.uk

Agents Note: Whilst every care has been taken to prepare these particulars, they are for guidance purposes only. All measurements are approximate and for general guidance purposes only and whilst every care has been taken to ensure their accuracy, they should not be relied upon and potential buyers/tenants are advised to recheck the measurements.