



£1,800 pcm
Heybourne Crescent, Colindale



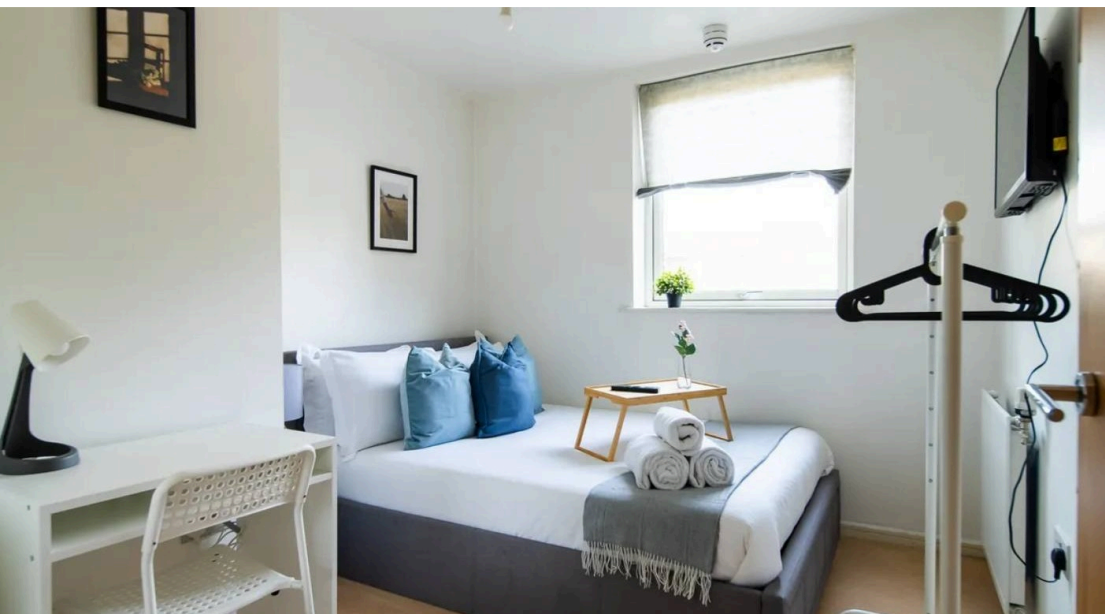
 2  2
Bedrooms Bathrooms

211 Edgware Rd, London, NW9 6LP |
colindale@warrenbradleyestates.co.uk

020 8200 7007

£1,800 pcm

Heybourne Crescent, Colindale



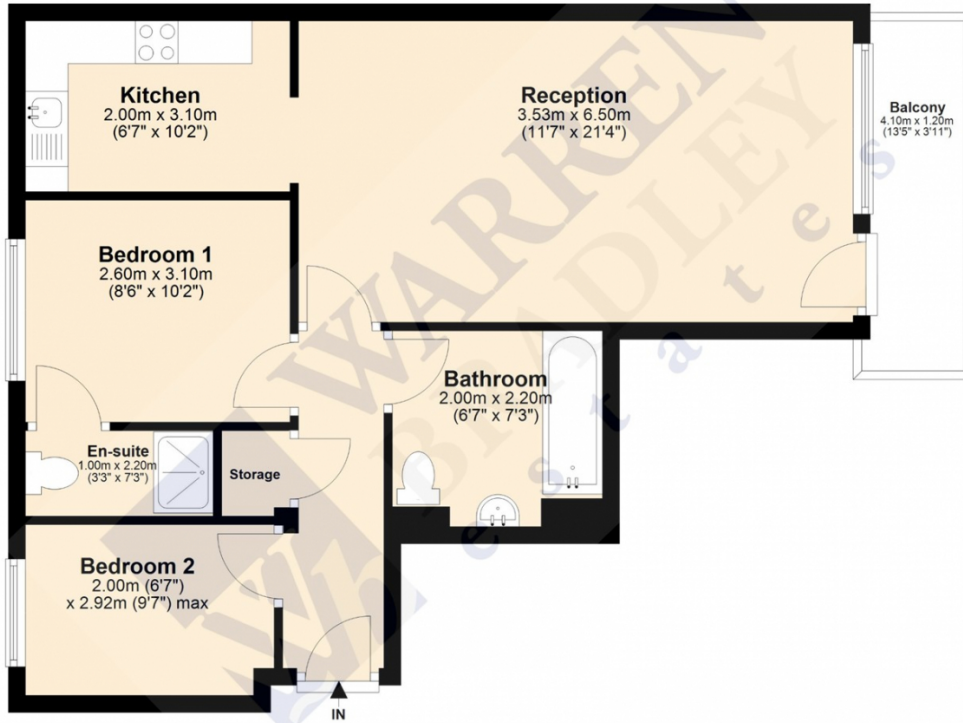
Warren Bradley Estates are pleased to offer for rent this two bedroom, two bathroom (1 en-suite) first floor purpose built apartment which is offered in excellent decorative order and benefits from a large reception room. modern kitchen, balcony, gas central heating, double glazing and lift.

This property is situated close to Colindale Underground Station, local bus services, parks and shops. Offered fully furnished and is available 15/06/26



Violet Court

Approx. 57.0 sq. metres (613.5 sq. feet)



Total area: approx. 57.0 sq. metres (613.5 sq. feet)

Energy Efficiency Rating		
	Current	Potential
Very energy efficient - lower running costs		
(92+) A		
(81-91) B	83	83
(69-80) C		
(55-68) D		
(39-54) E		
(21-38) F		
(1-20) G		
Not energy efficient - higher running costs		
England, Scotland & Wales		EU Directive 2002/91/EC

Address: Heybourne Crescent, NW9

